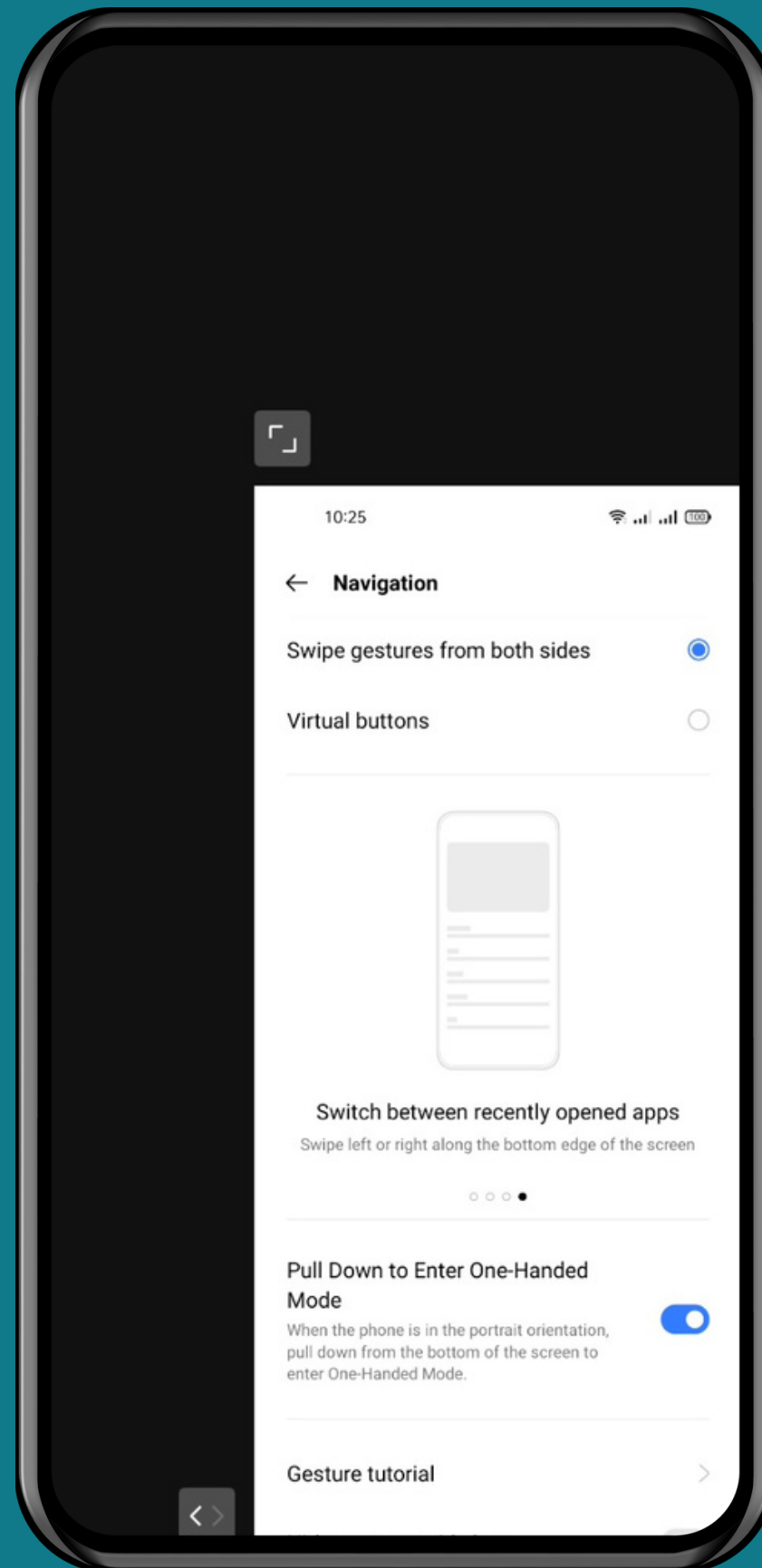


# REALME

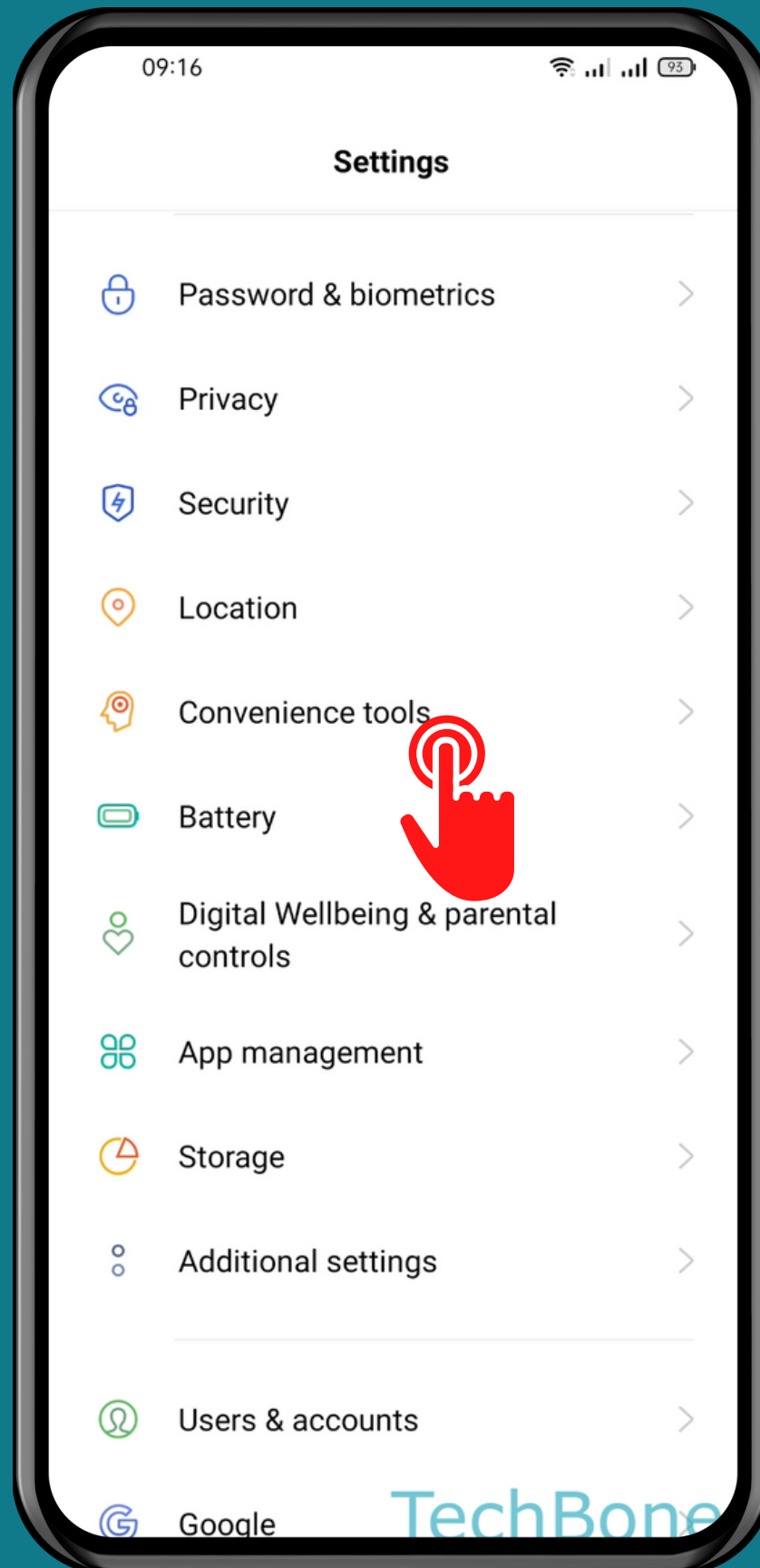
Android 11 - realme UI 2



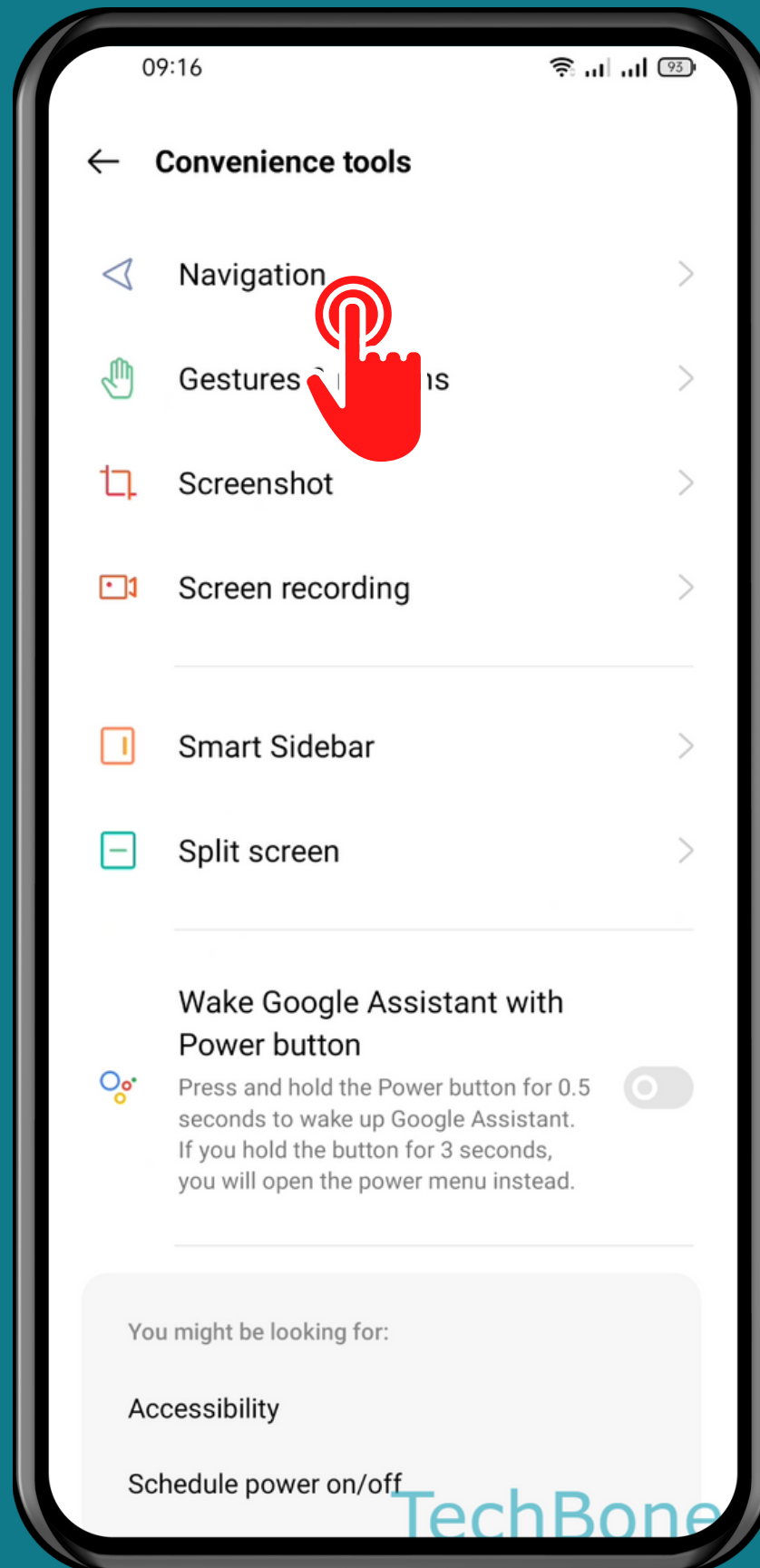
# PULL-DOWN GESTURE TO ENTER ONE-HANDED MODE (GESTURE NAVIGATION)



Tap on  
Settings

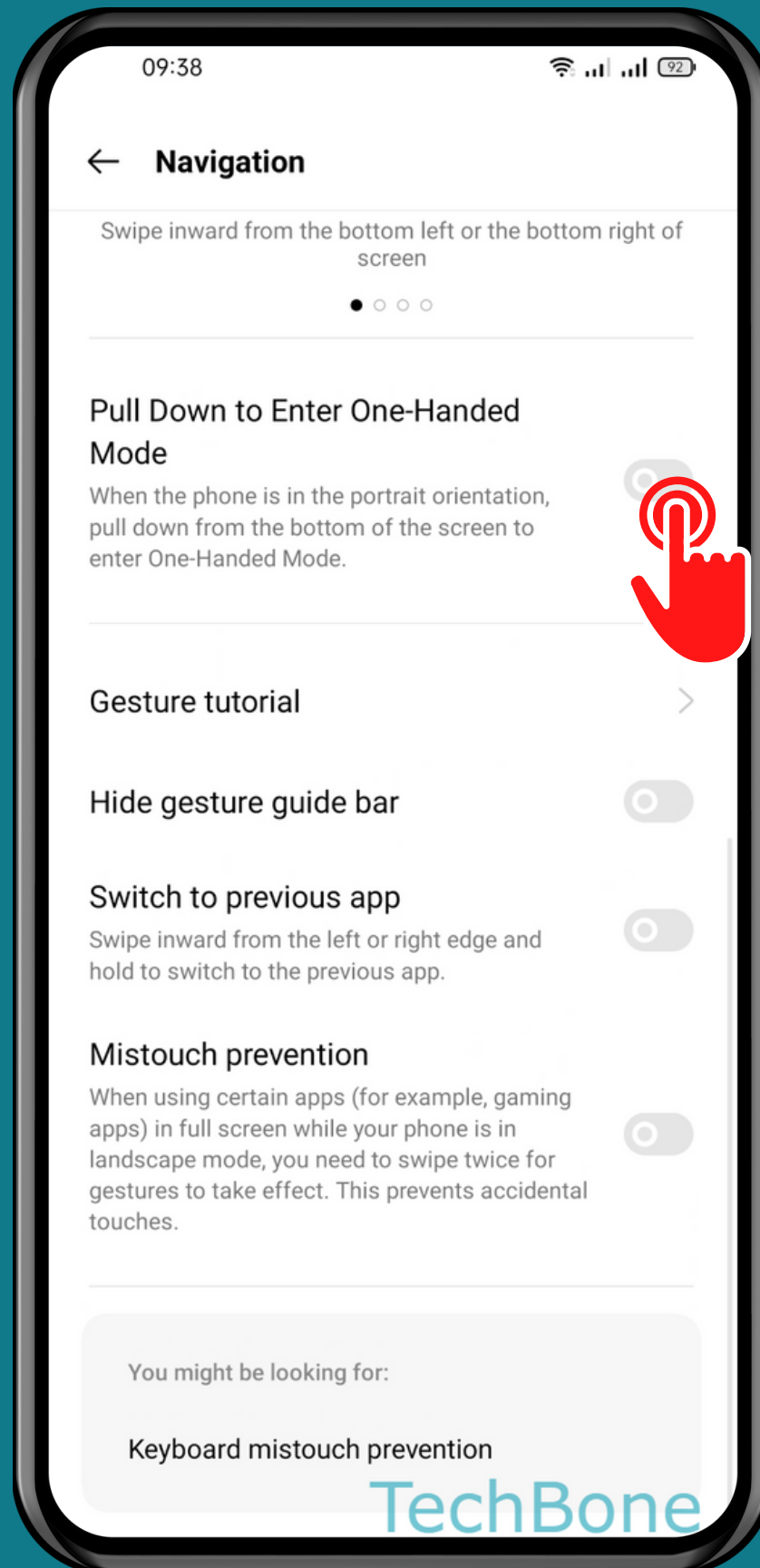


# Tap on Convenience tools



# Tap on Navigation

TechBone



# Turn On/Off

# Pull Down to Enter One-Handed Mode

Done!