

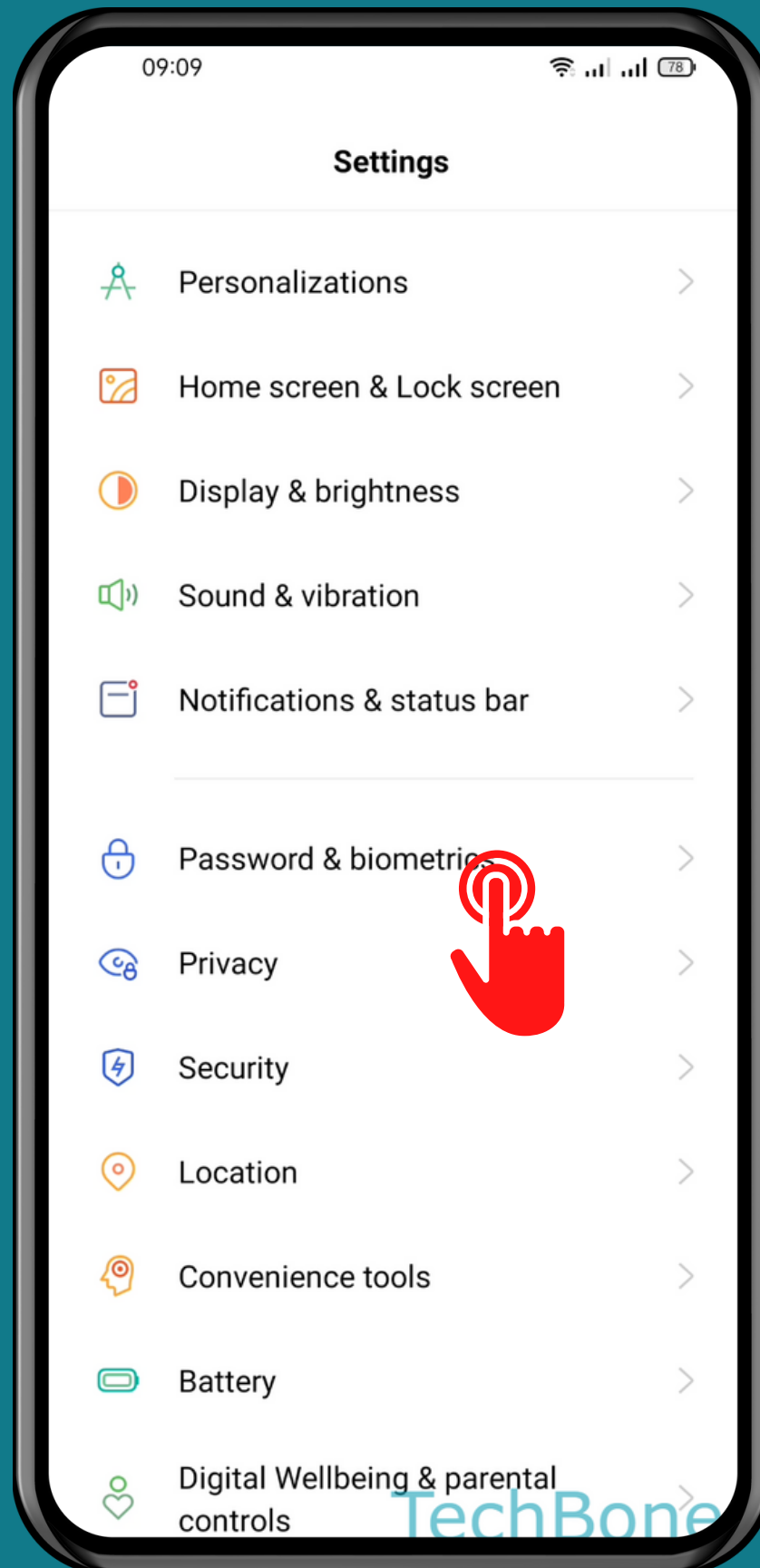
REALME

Android 11 - realme UI 2

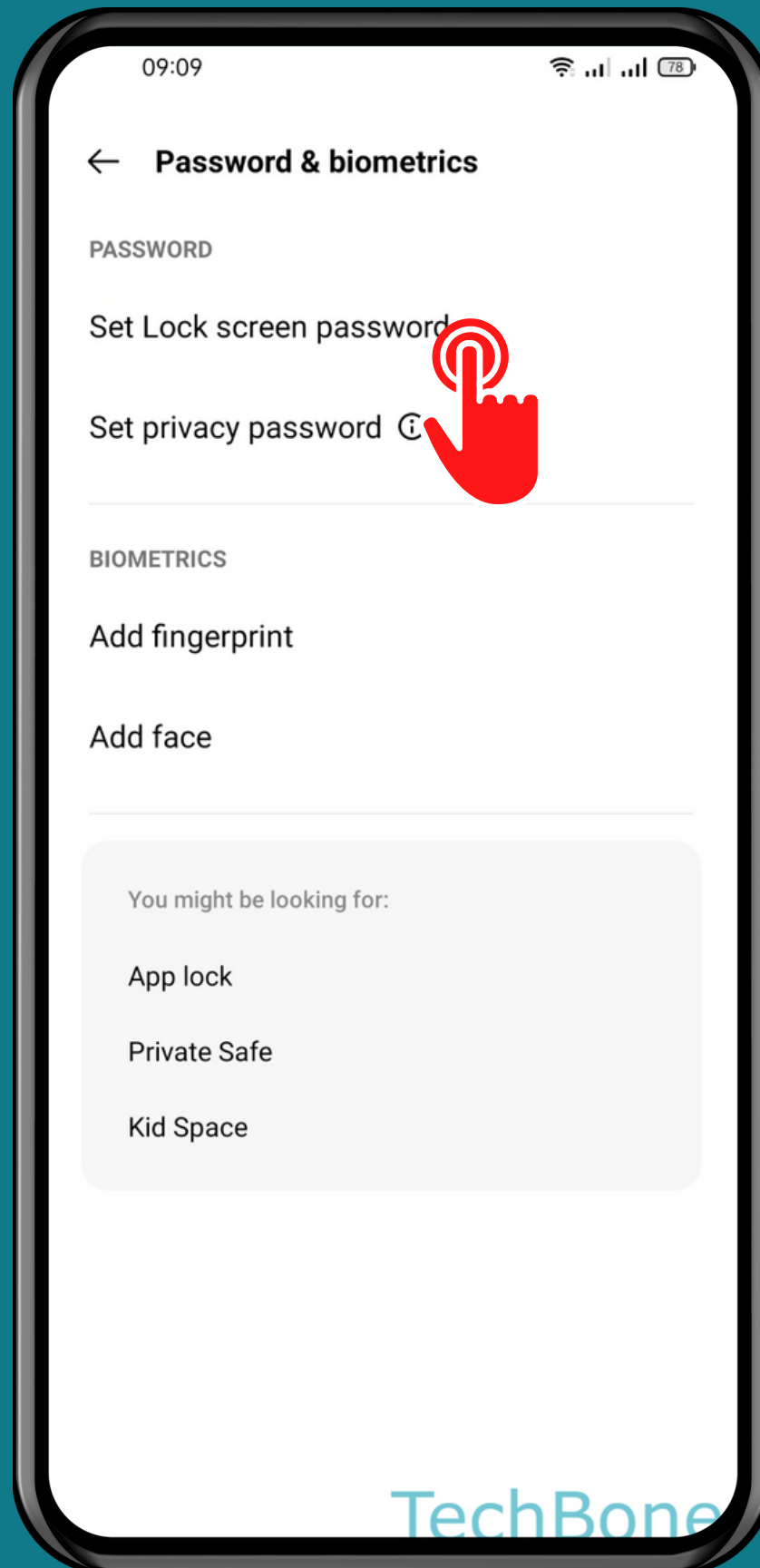
HOW TO SET UP SCREEN LOCK (PATTERN, PIN OR PASSWORD)



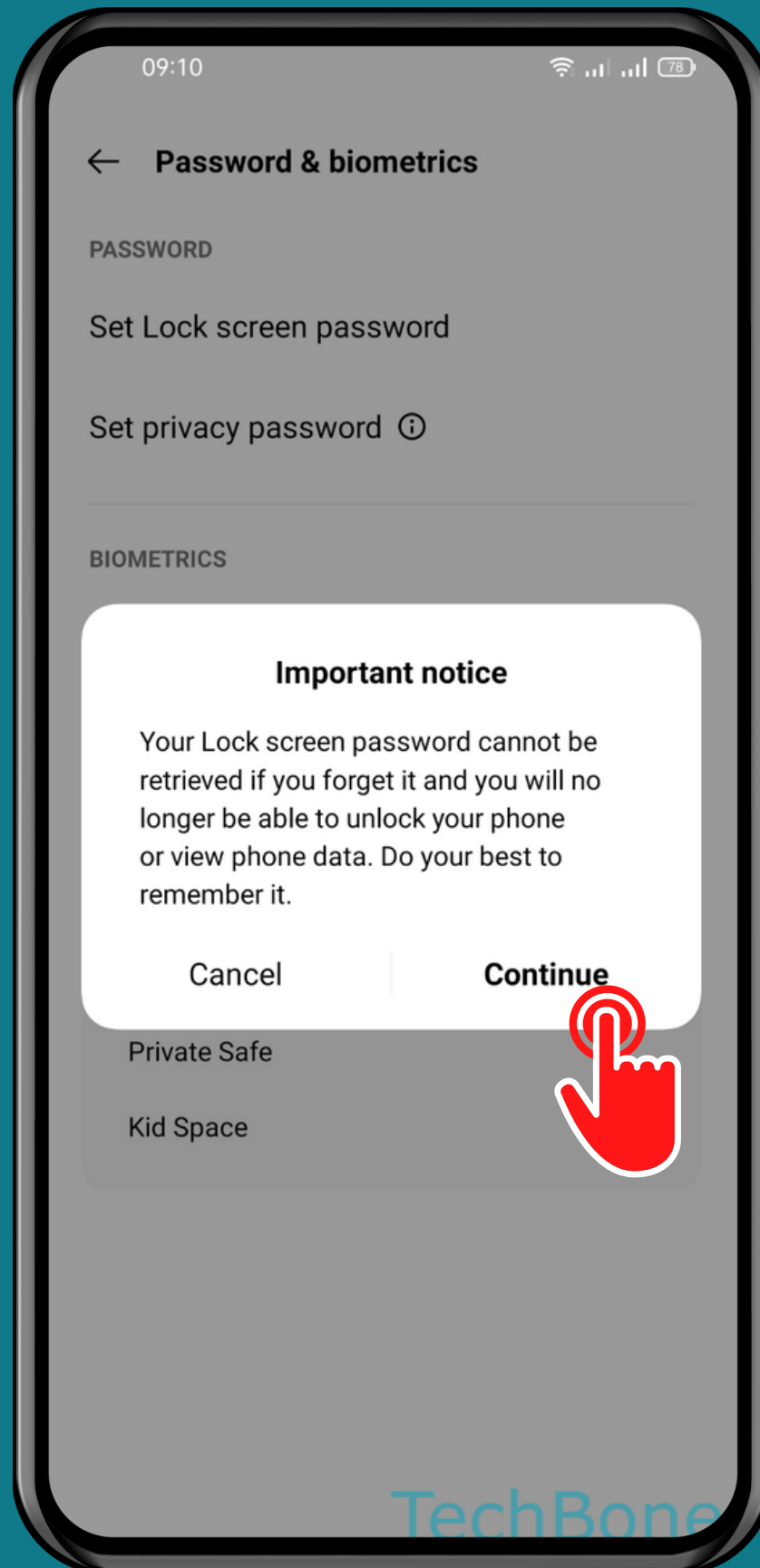
Tap on
Settings



Tap on Password & biometrics

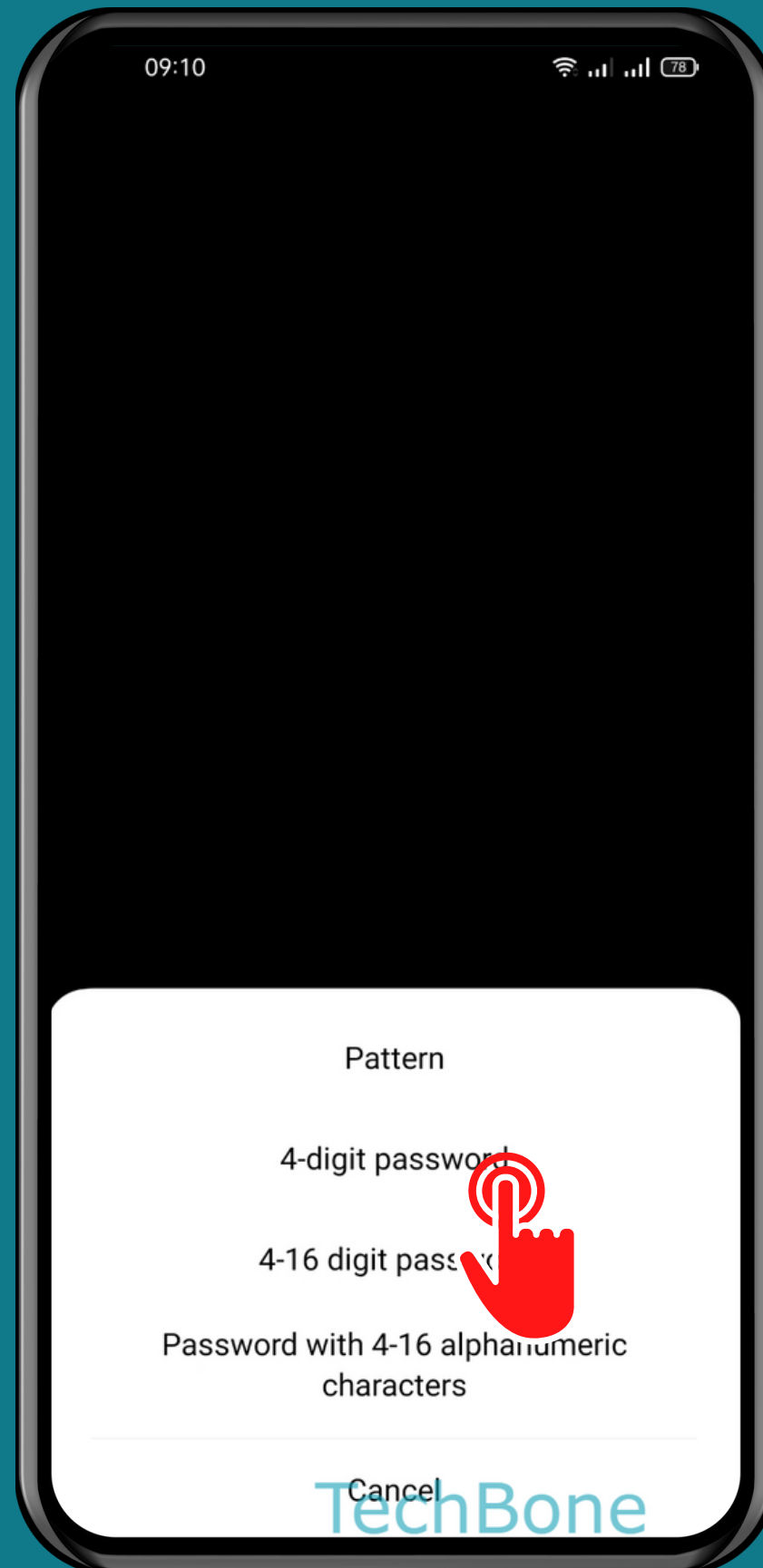


Tap on
Set Lock screen
password



Tap on
Continue

TechBone



Choose the
Unlock method and
follow the instructions

Done!