

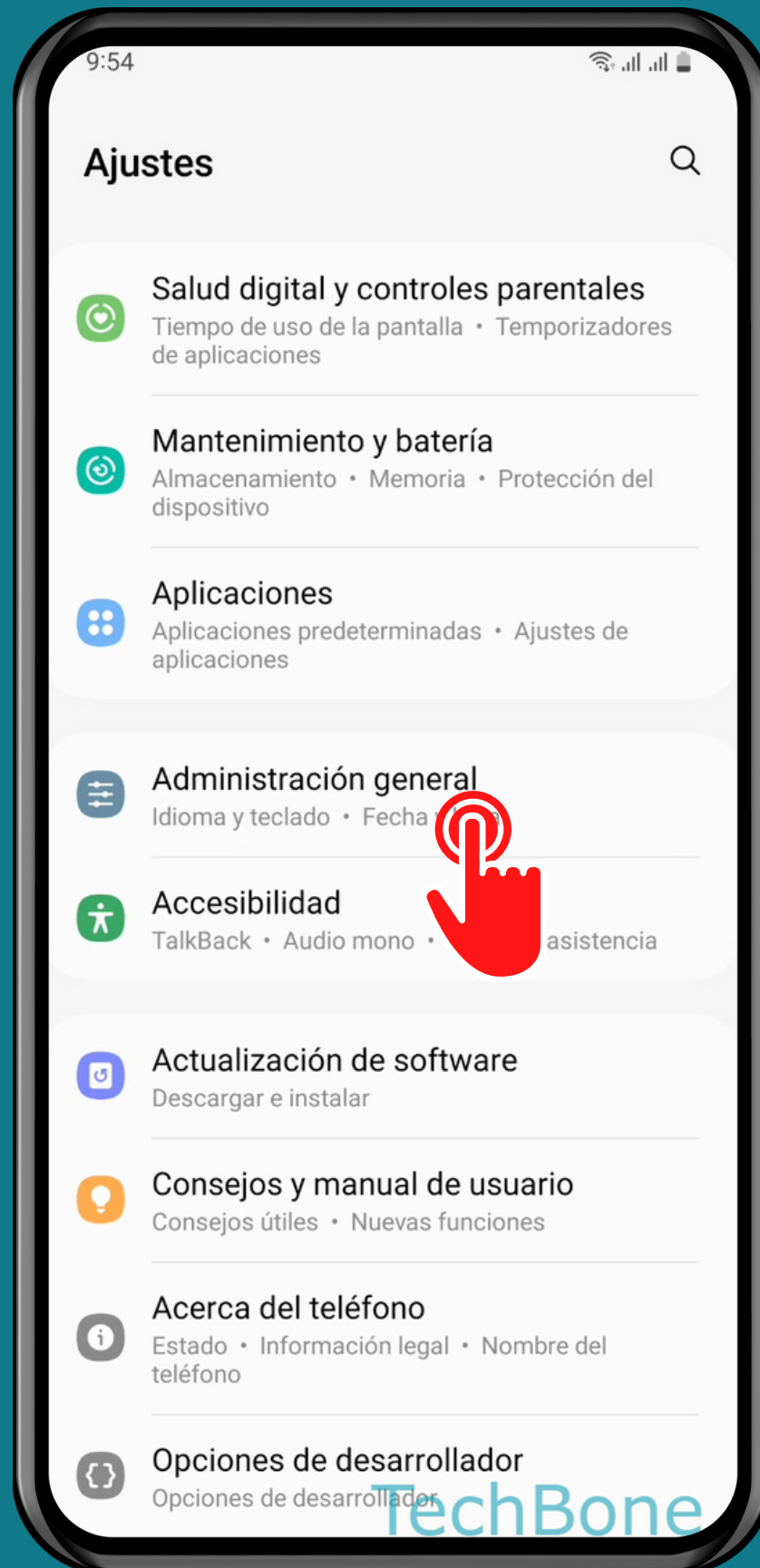
# SAMSUNG

Android 13 - One UI 5

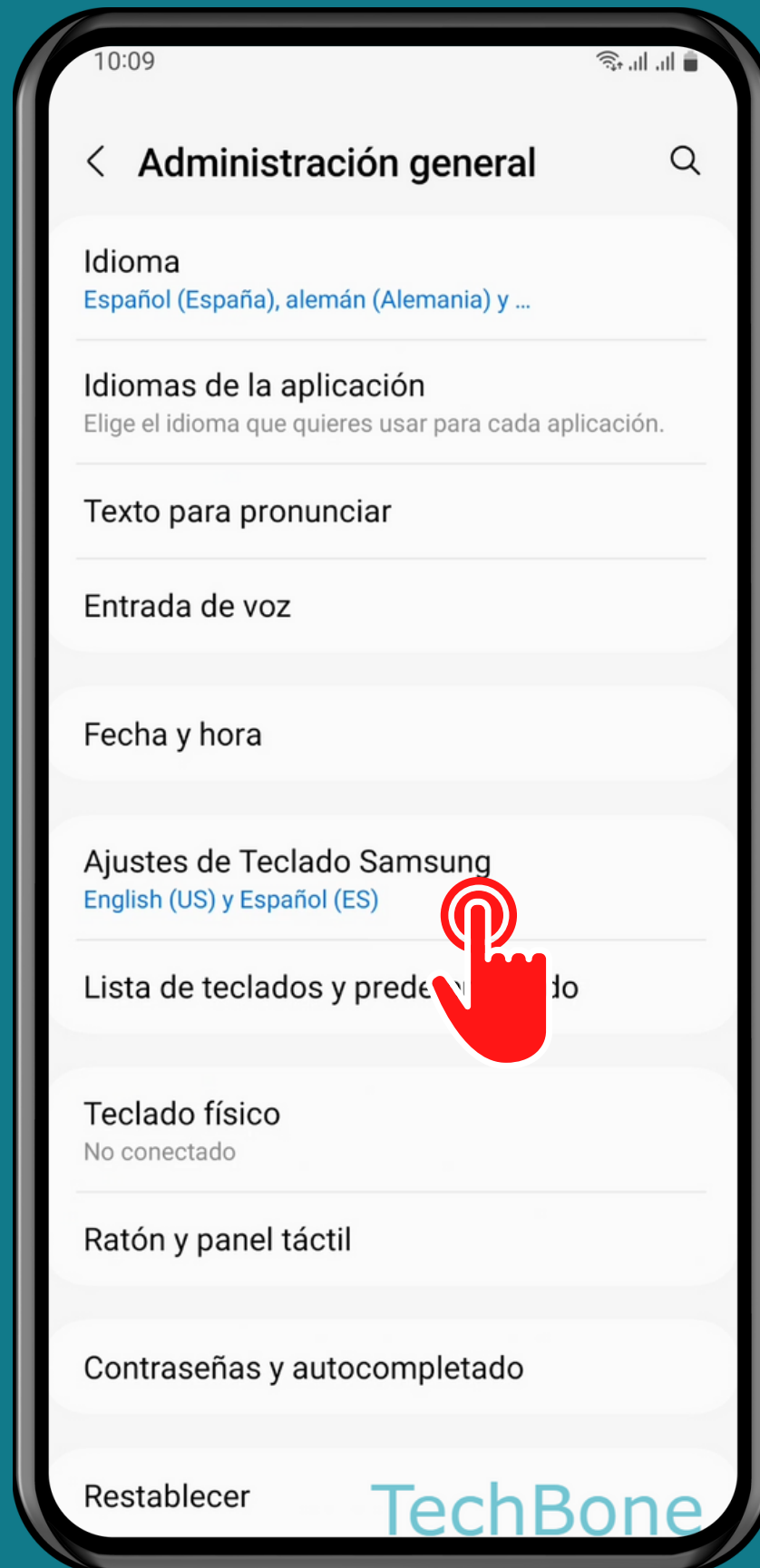
# AGREGAR O QUITAR IDIOMAS DEL TECLADO



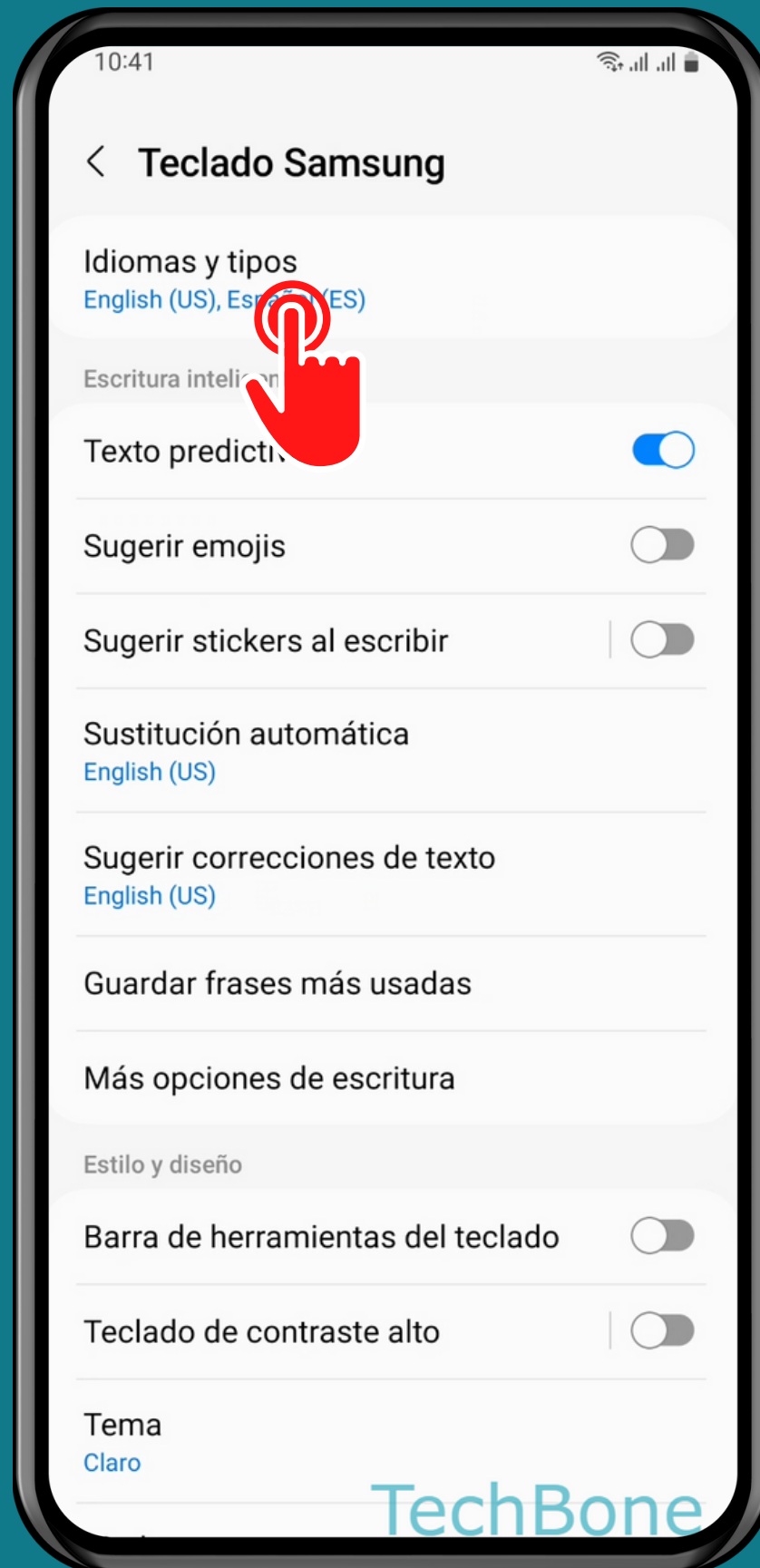
# Abre los Ajustes



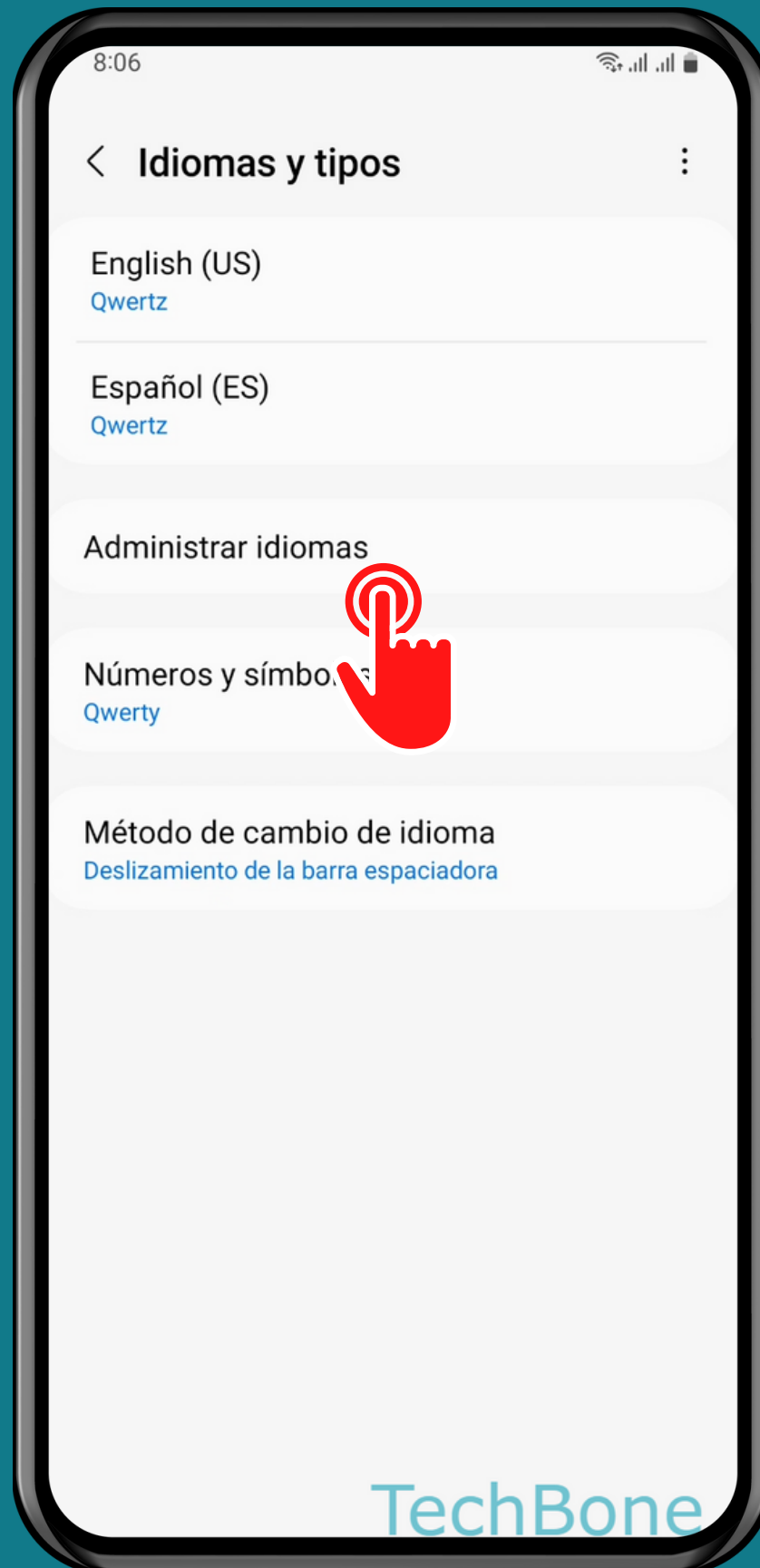
# Presiona Administración general



# Presiona Ajustes de Teclado Samsung



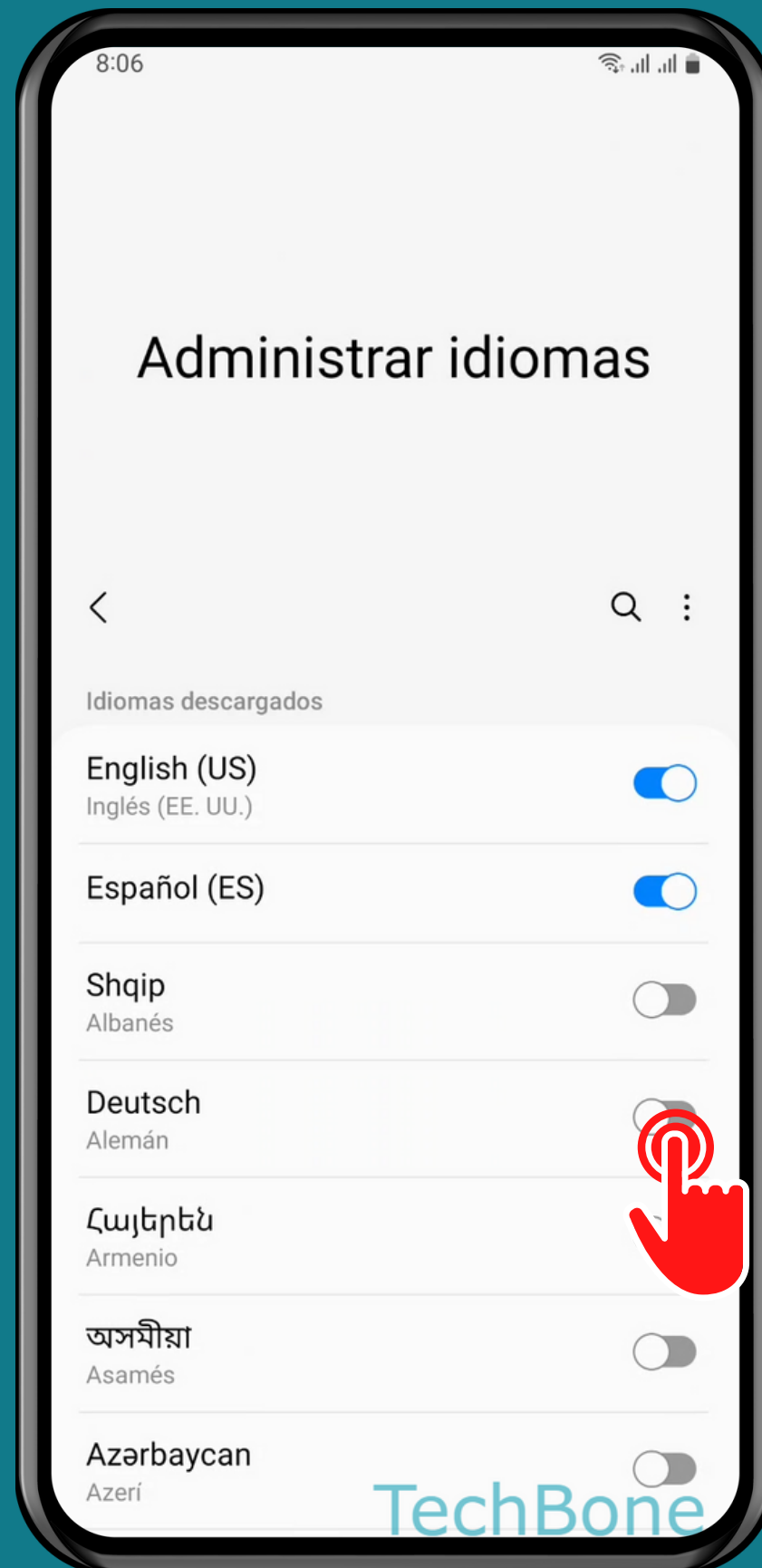
# Presiona Idiomas y tipos



Presiona

Administrar idiomas





Activa o desactiva  
uno o más Idiomas

¡Listo!