

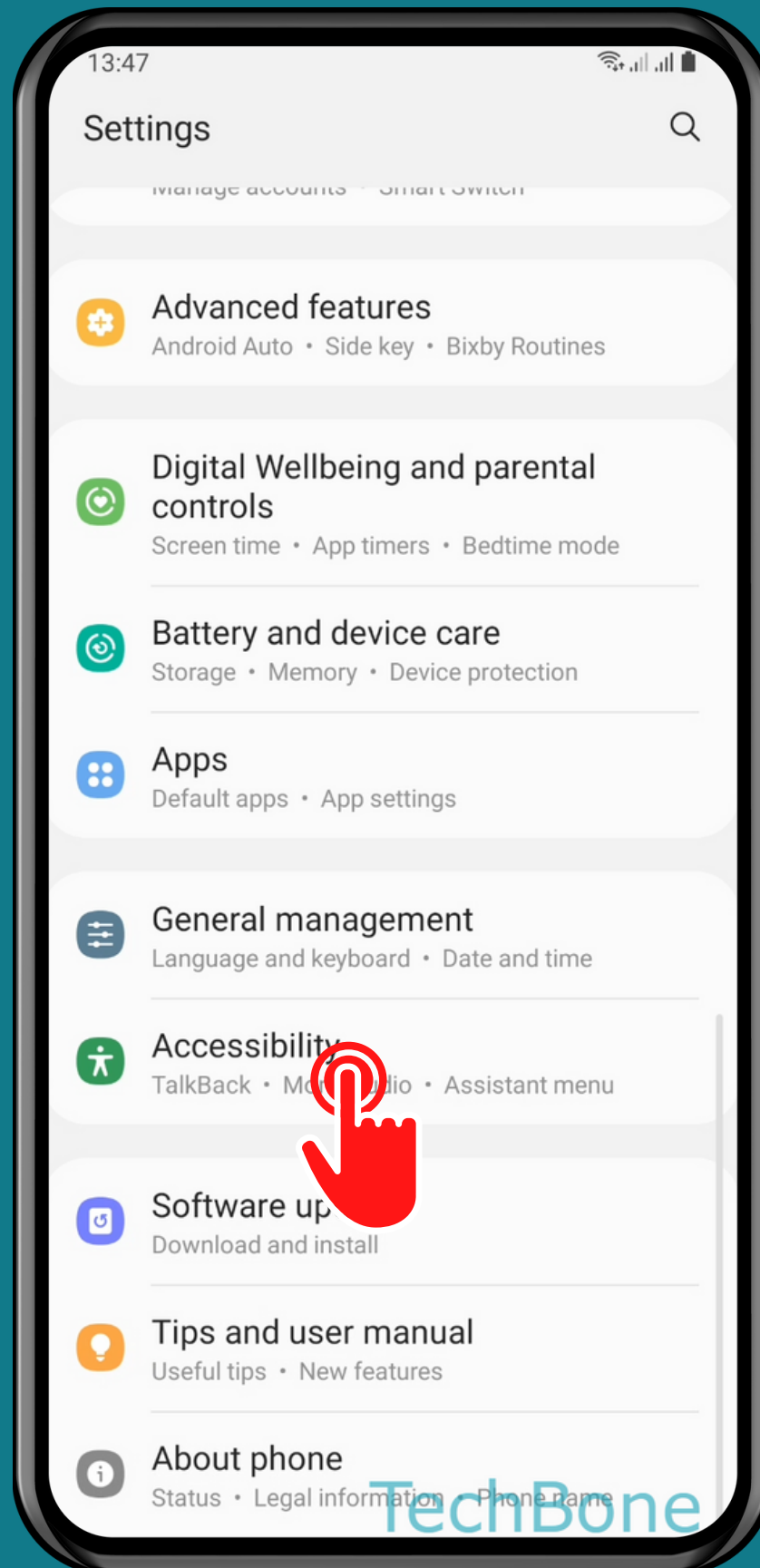
SAMSUNG

Android 11 - One UI 3

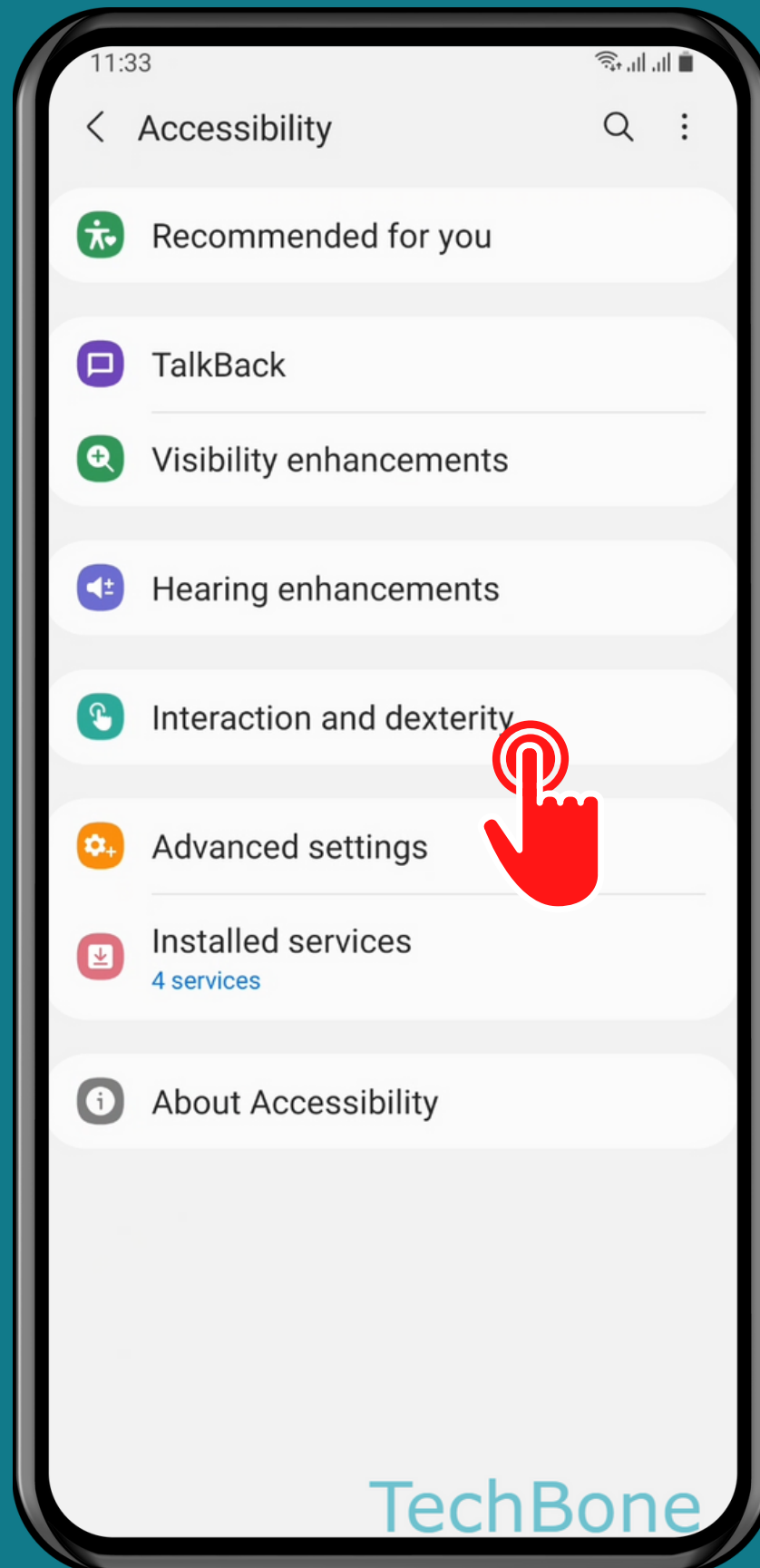
HOW TO TURN ON/OFF ASSISTANT MENU



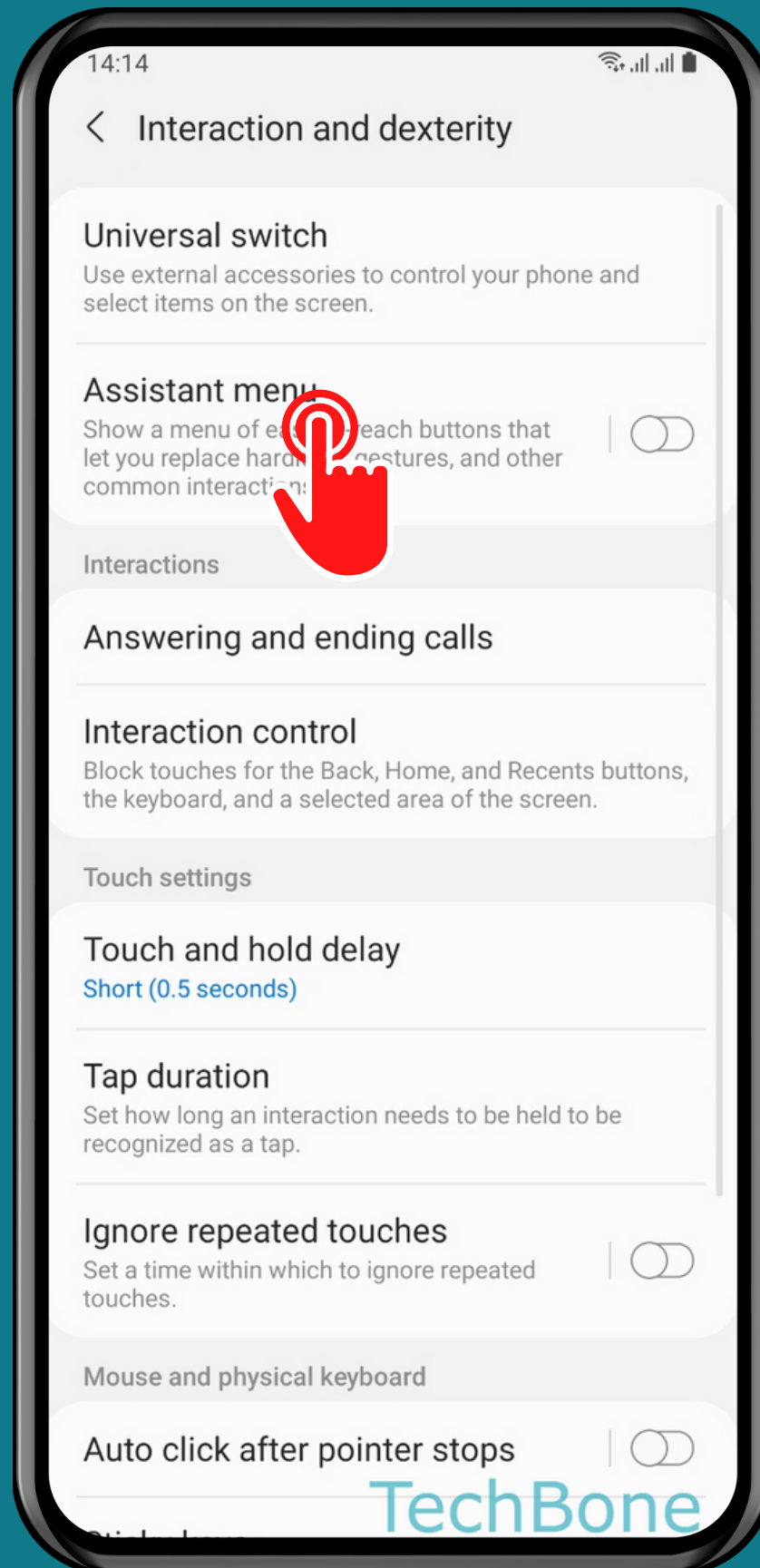
Tap on
Settings



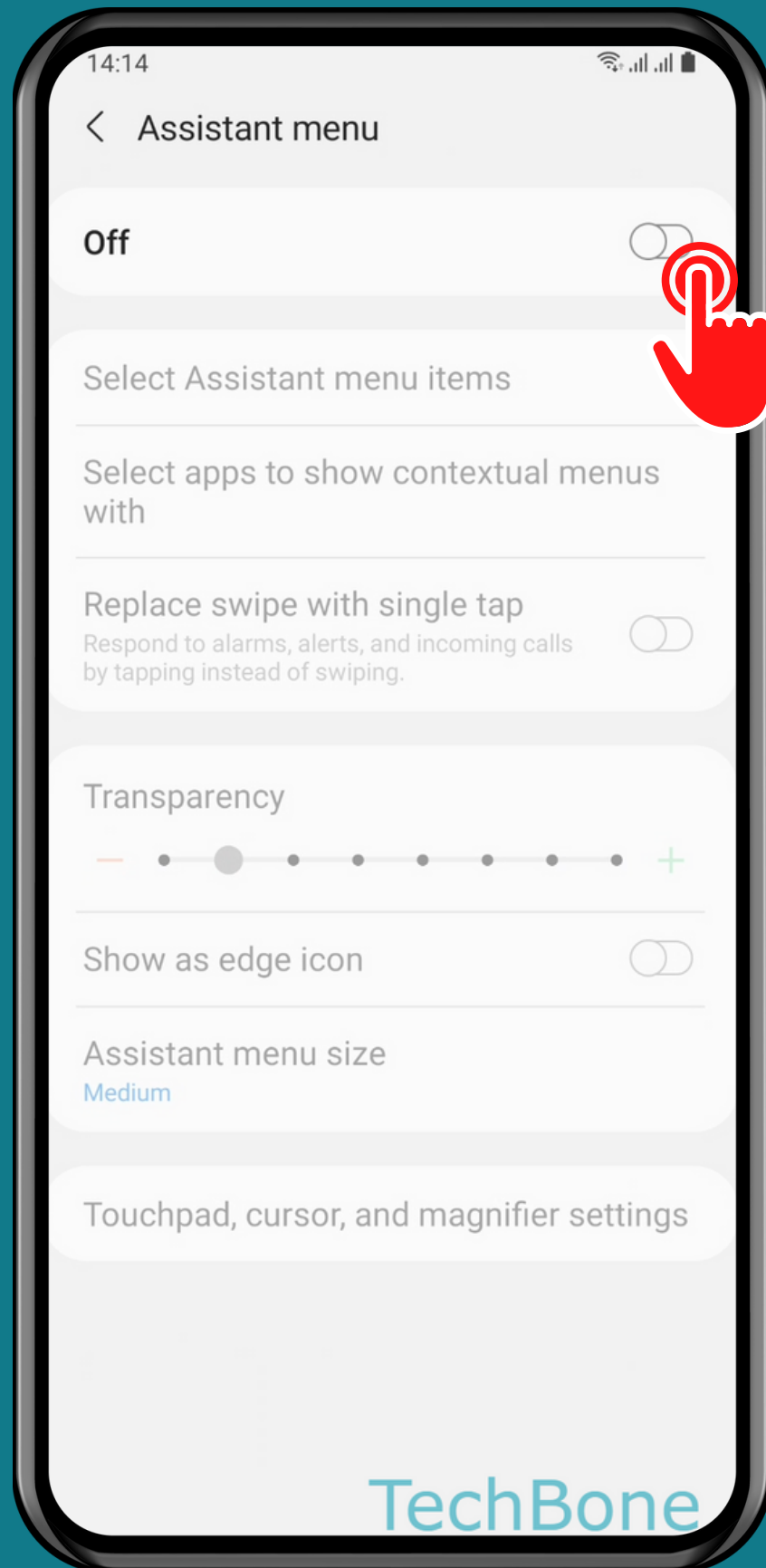
Tap on Accessibility



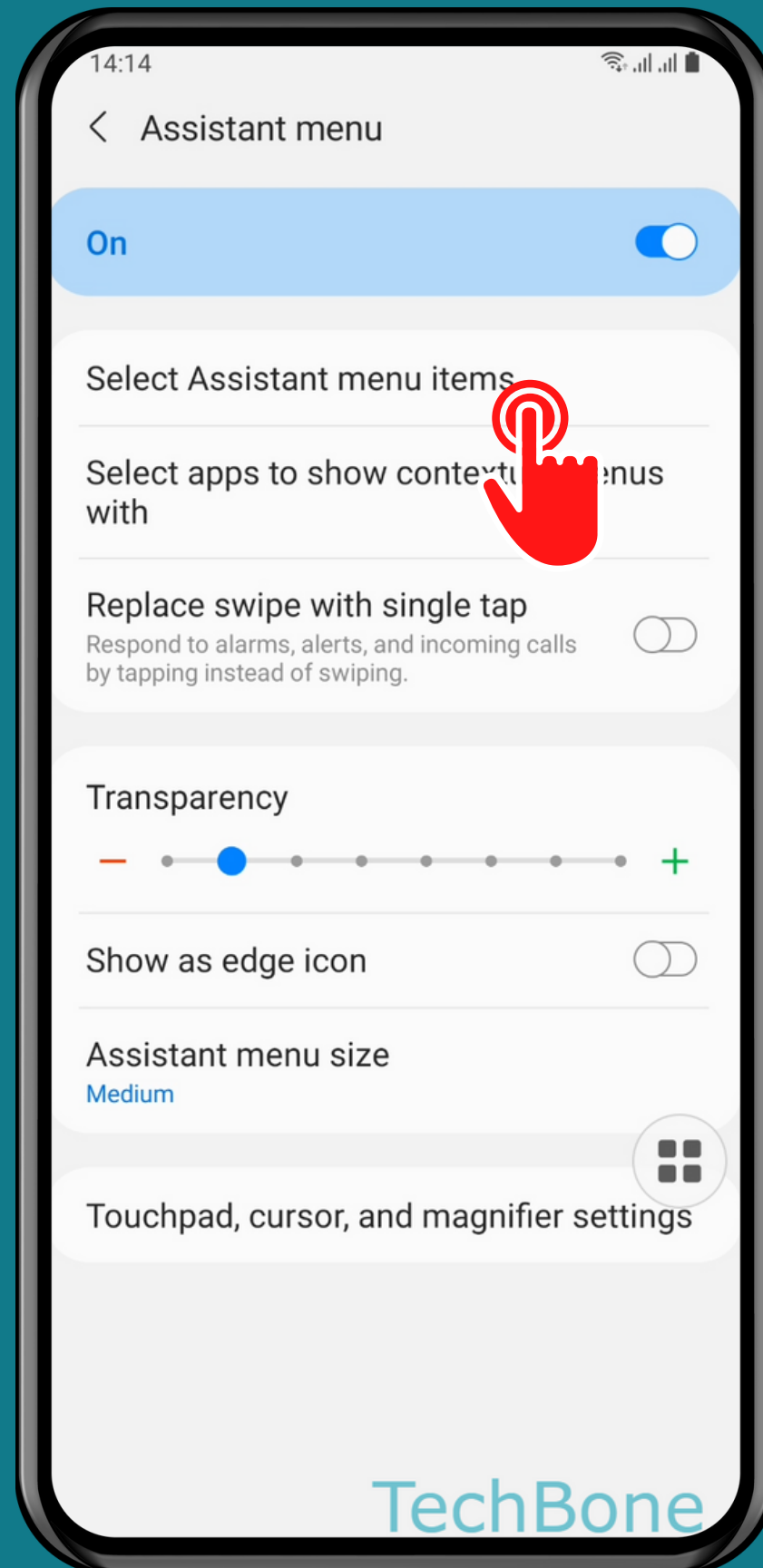
Tap on Interaction and dexterity



Tap on Assistant menu



Turn On/Off Assistant menu



Select the **Assistant**
menu items and set
other **Options**

Done!