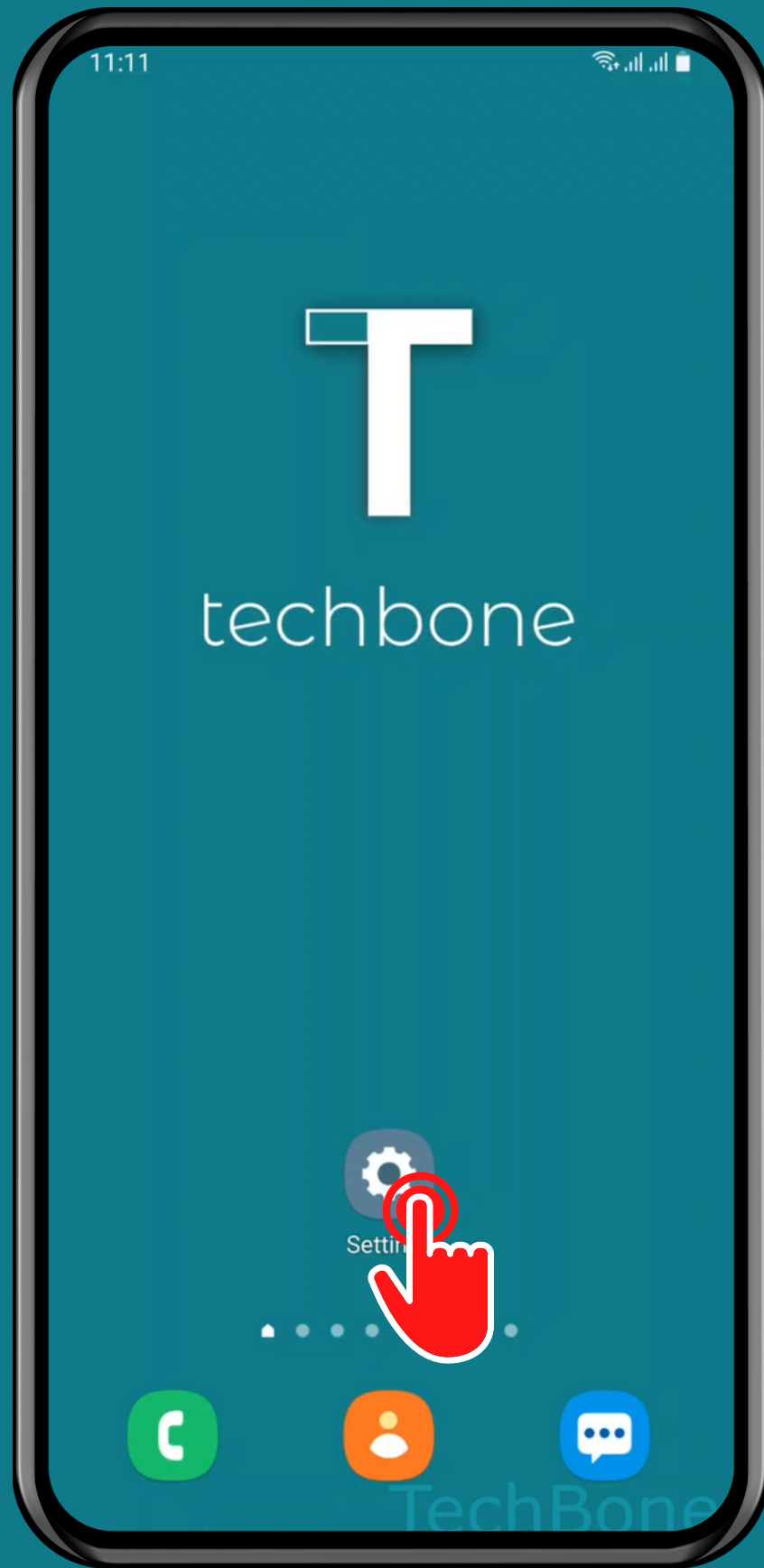


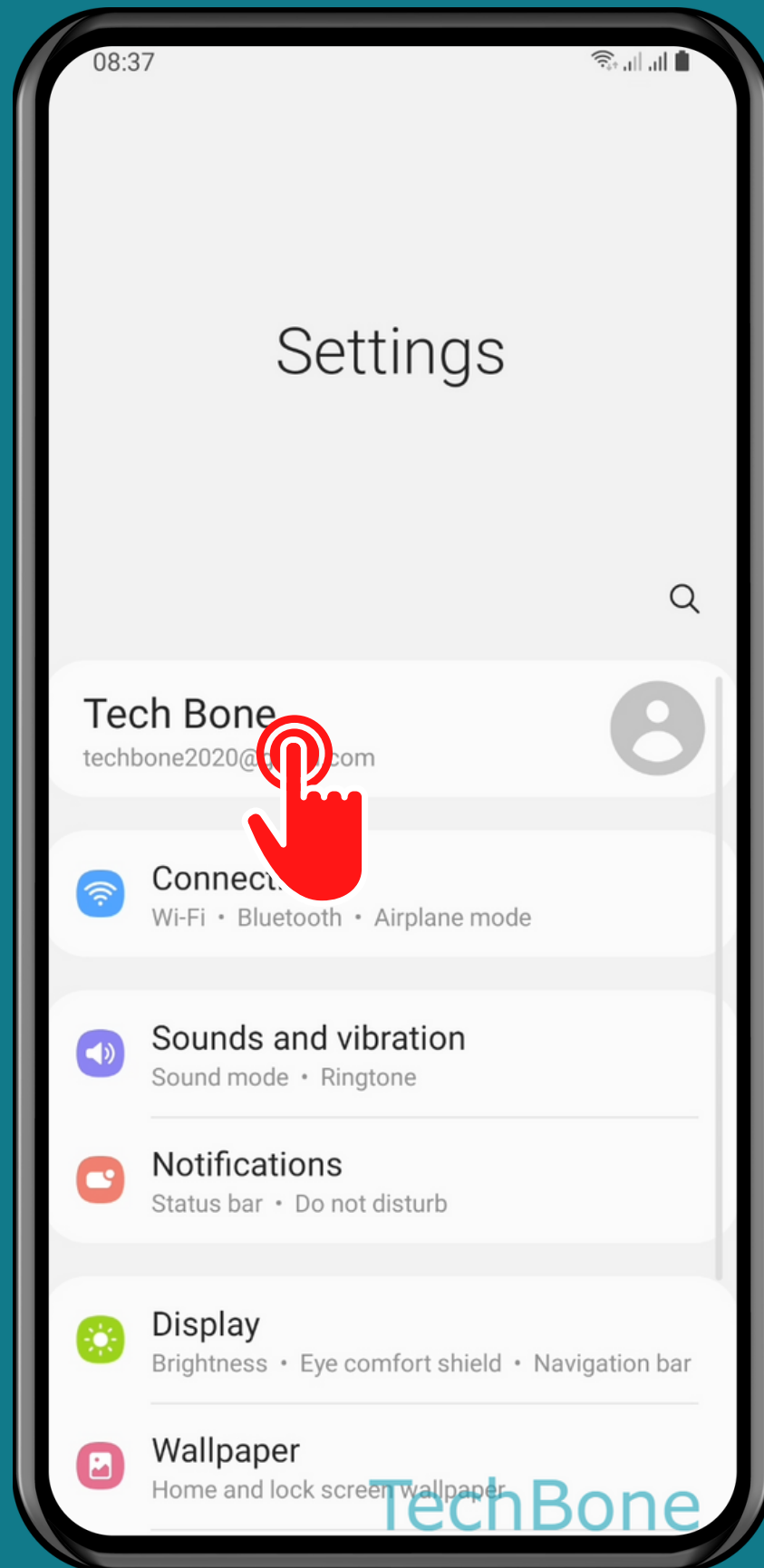
SAMSUNG

Android 11 - One UI 3

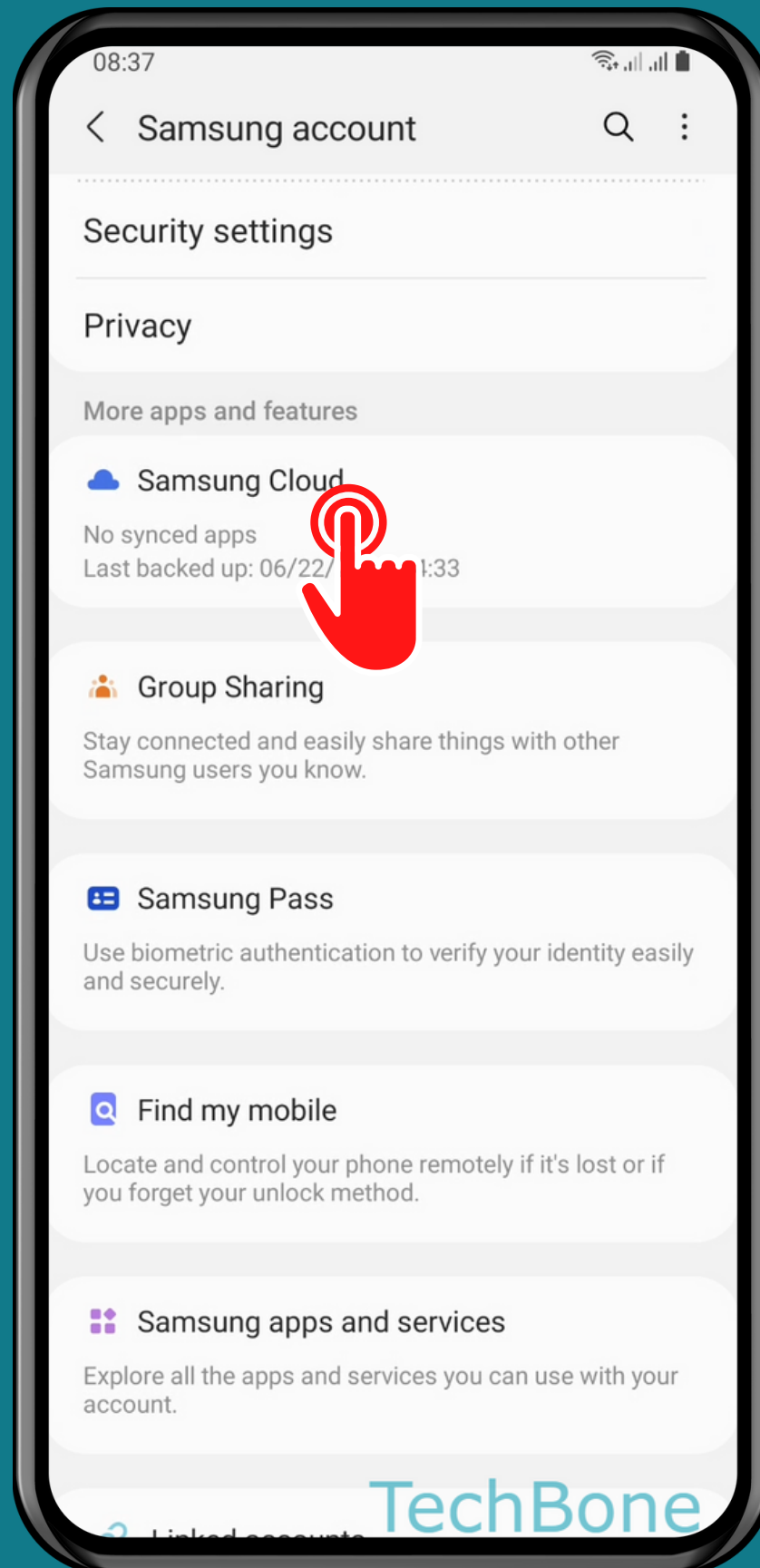
HOW TO TURN ON/OFF AUTOMATIC BACKUPS TO SAMSUNG CLOUD



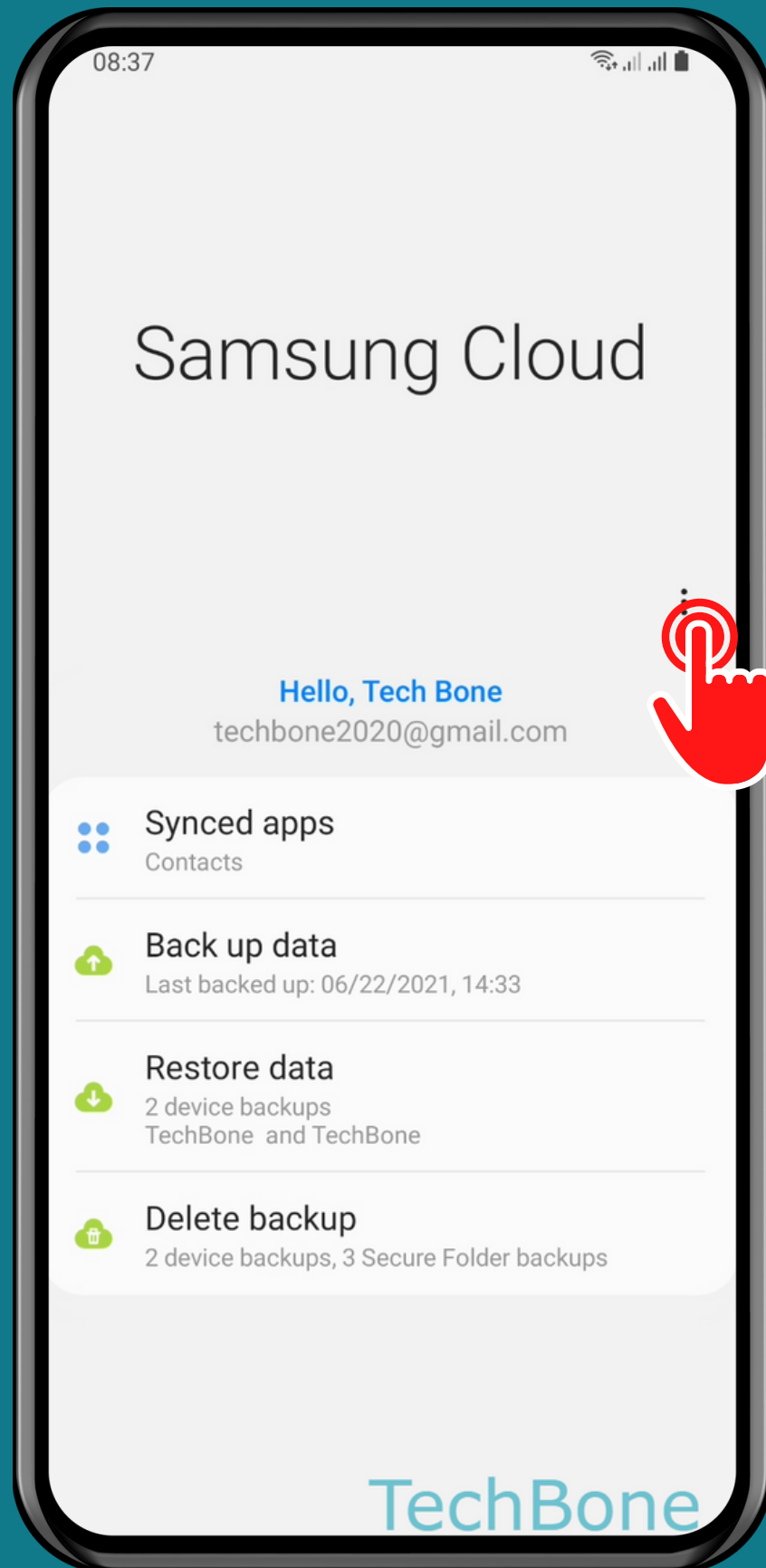
Tap on Settings



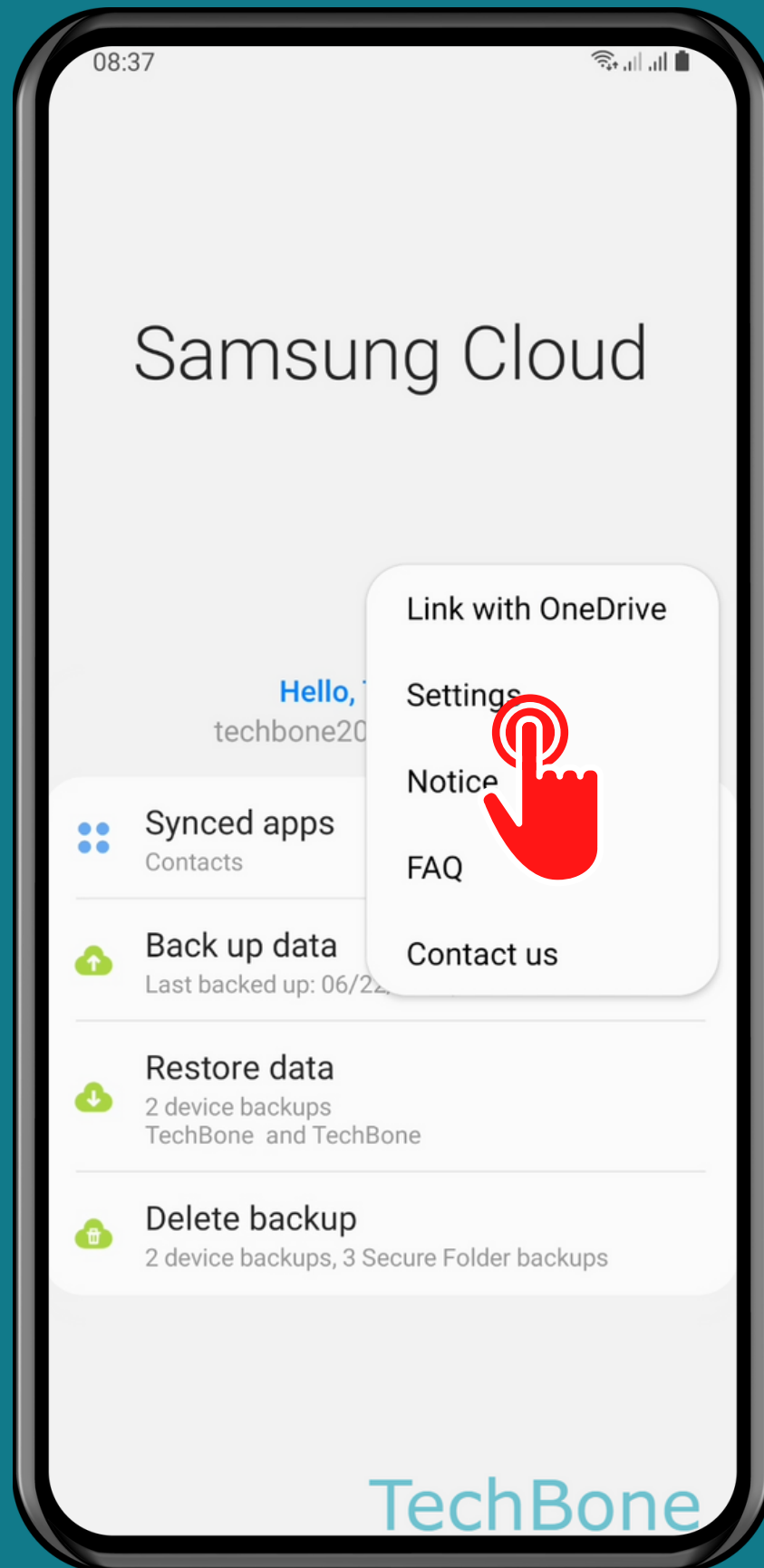
Tap on Samsung account



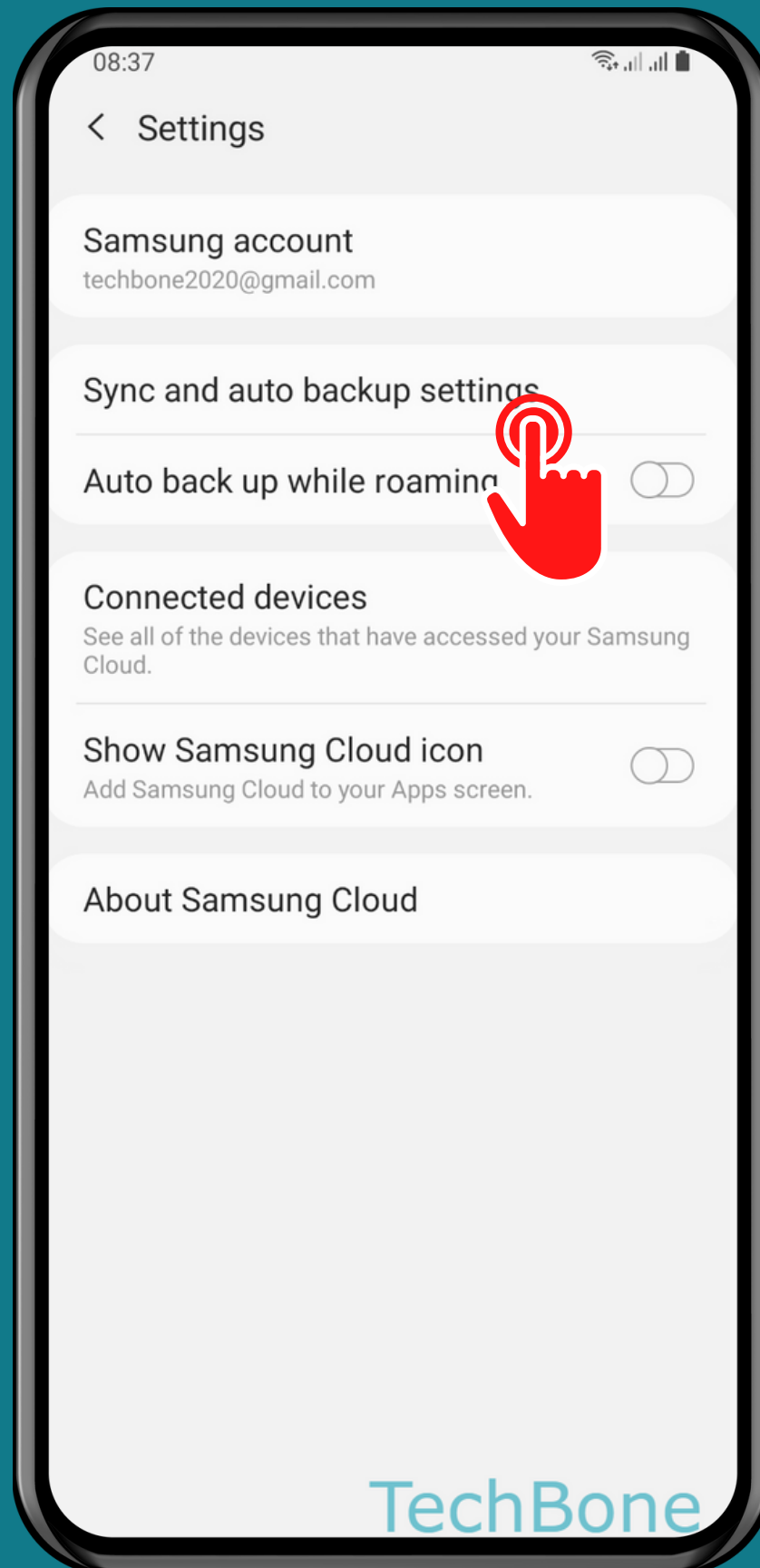
Tap on Samsung Cloud



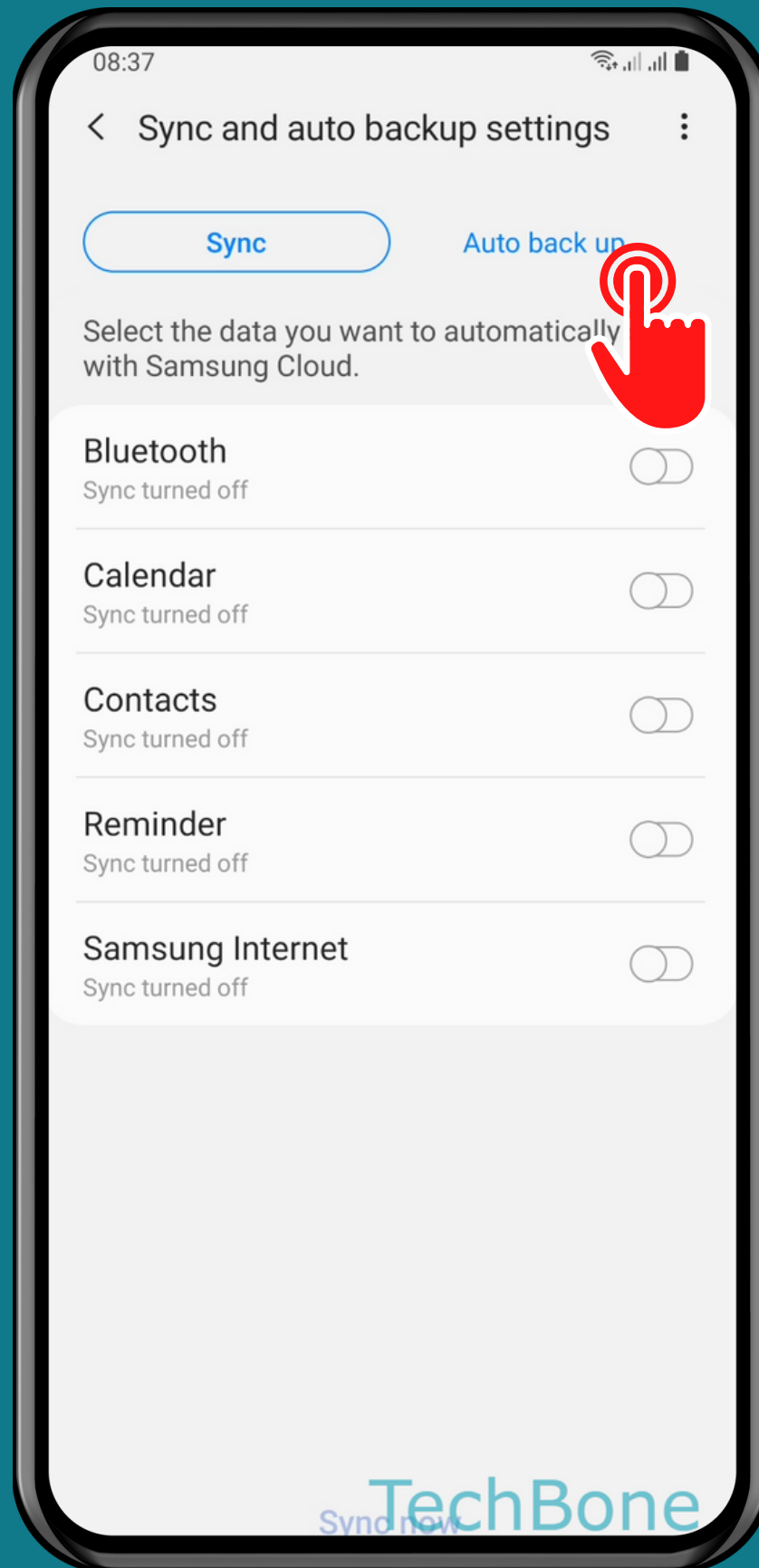
Open the Menu



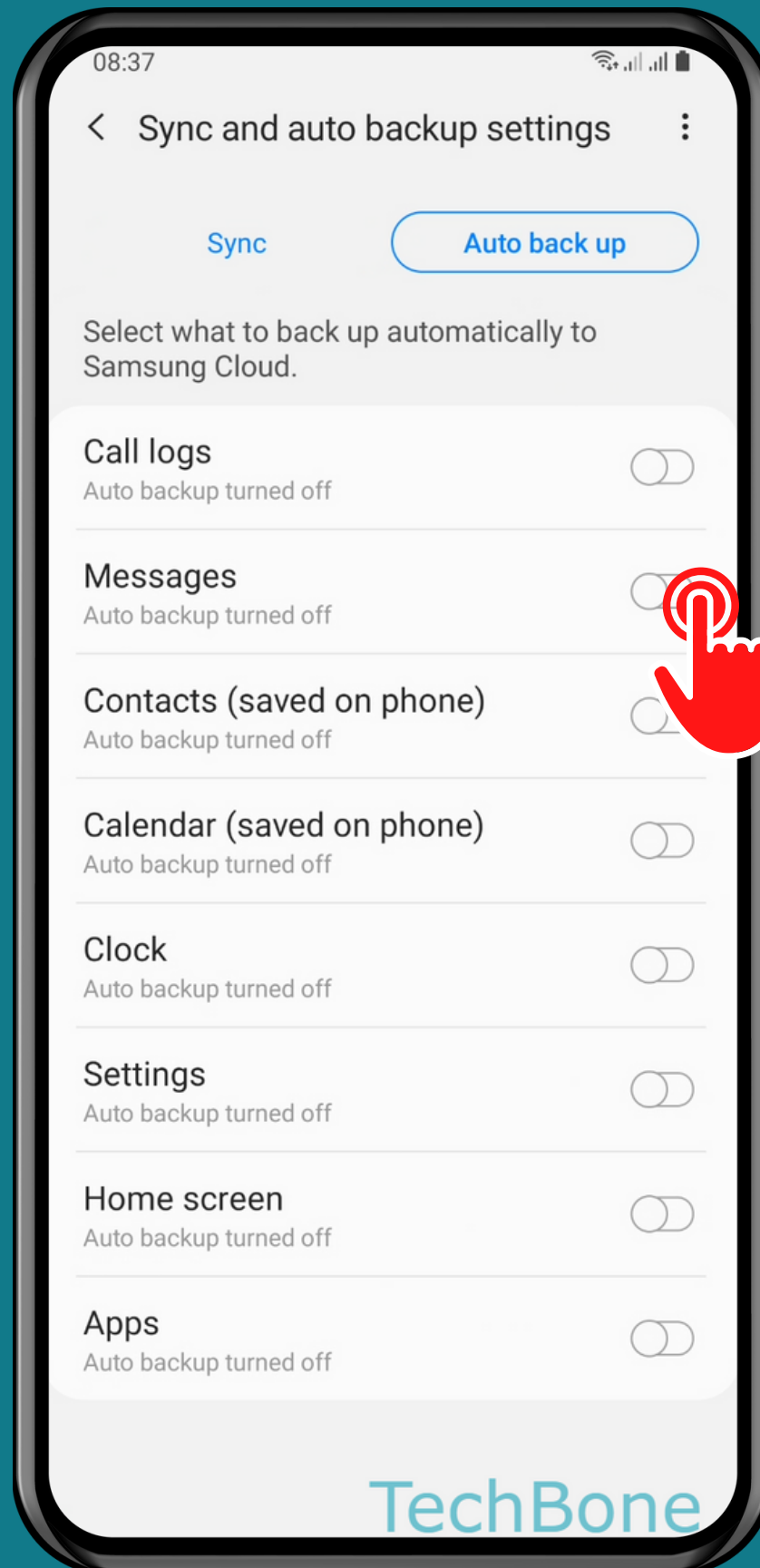
Tap on
Settings



Tap on
Sync and auto
backup settings



Tap on
Auto back up



Turn On/Off the desired Categories

Done!