

SAMSUNG

Android 11 - One UI 3

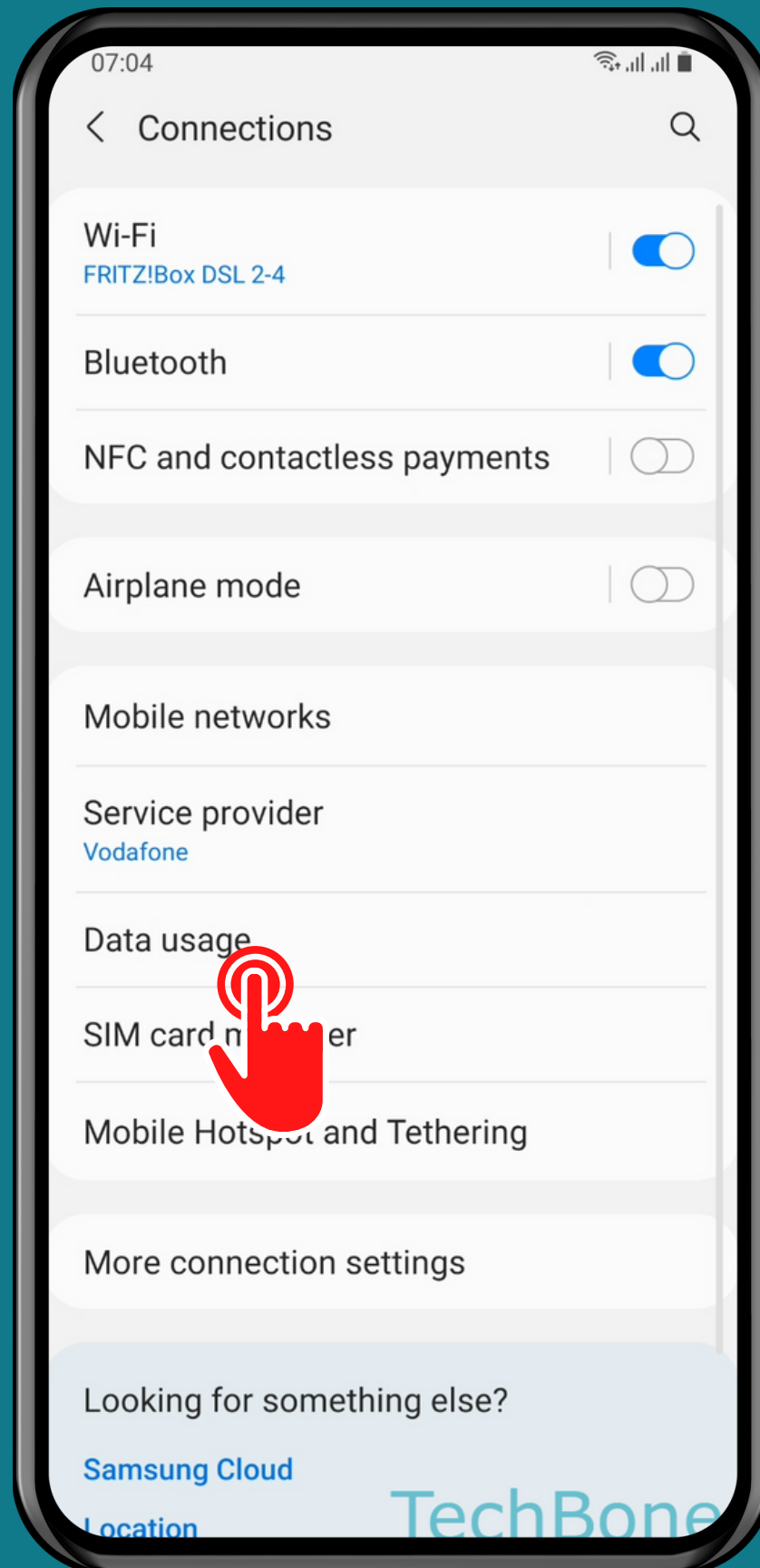
# HOW TO CHANGE DATA USAGE LIMIT



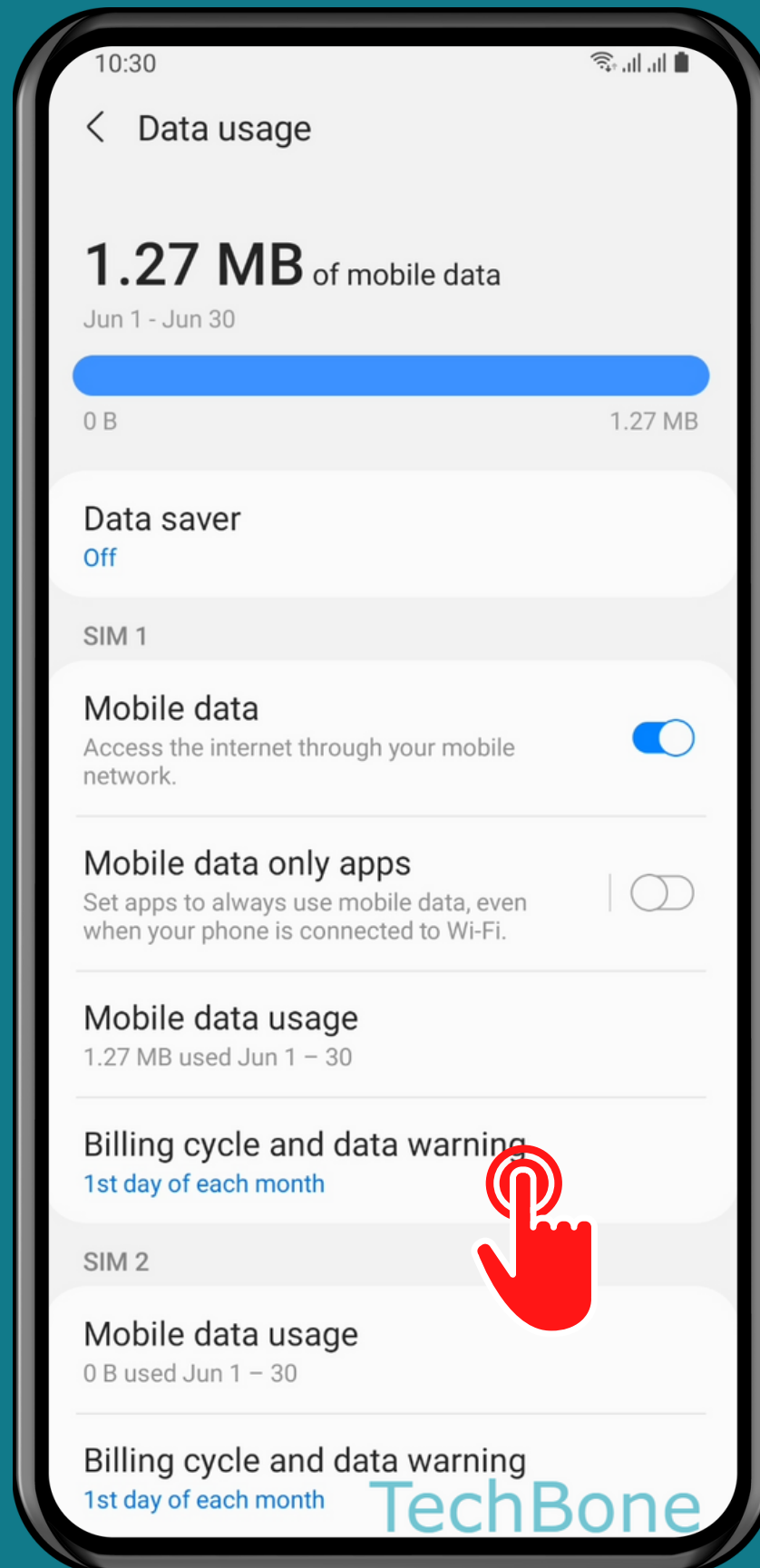
Tap on  
Settings



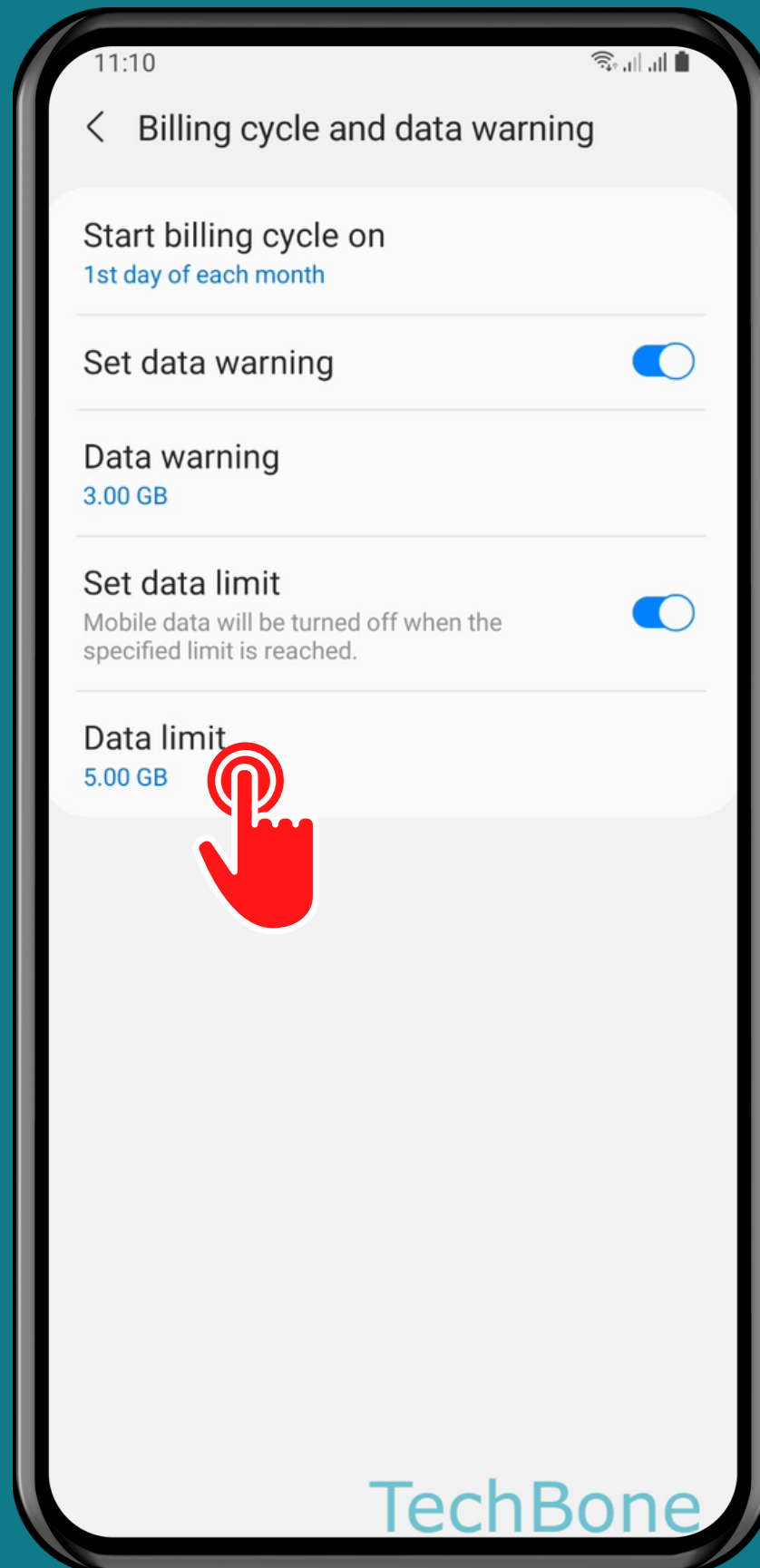
# Tap on Connections



# Tap on Data usage

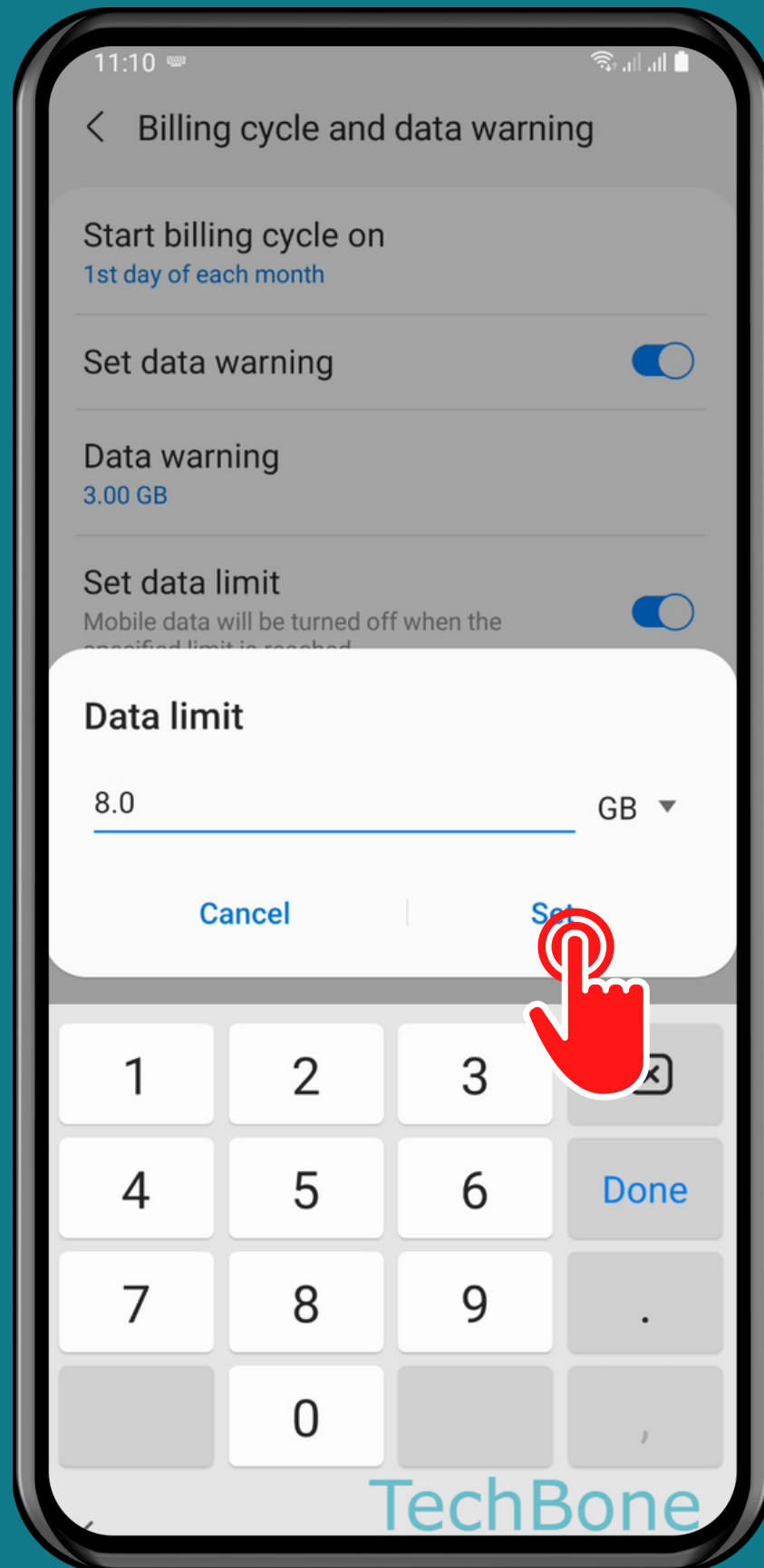


# Tap on Billing cycle and data warning



Tap on  
Data limit





Set the **Data limit** and  
tap **Set**

TechBone

Done!