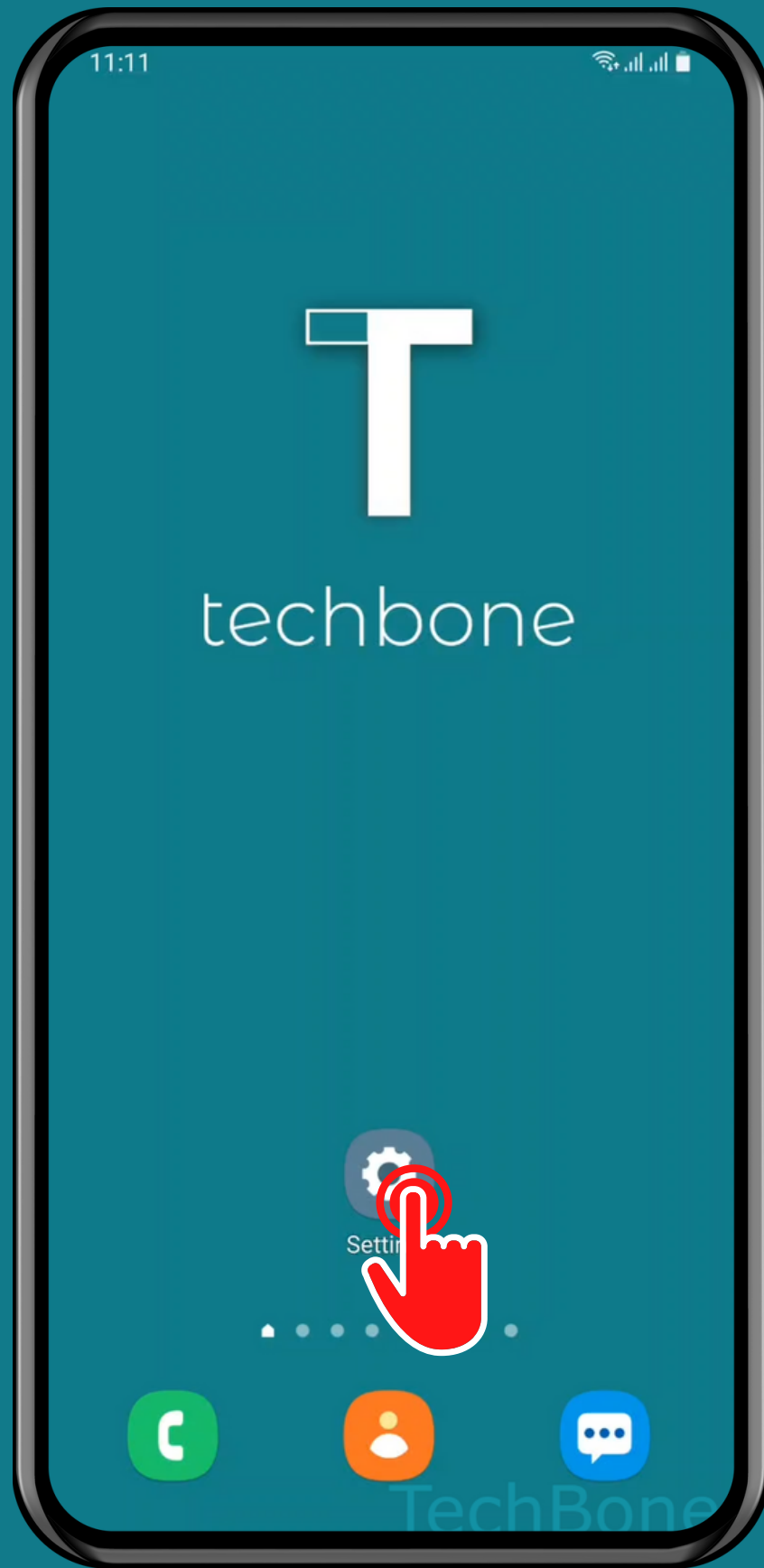


SAMSUNG

Android 11 - One UI 3

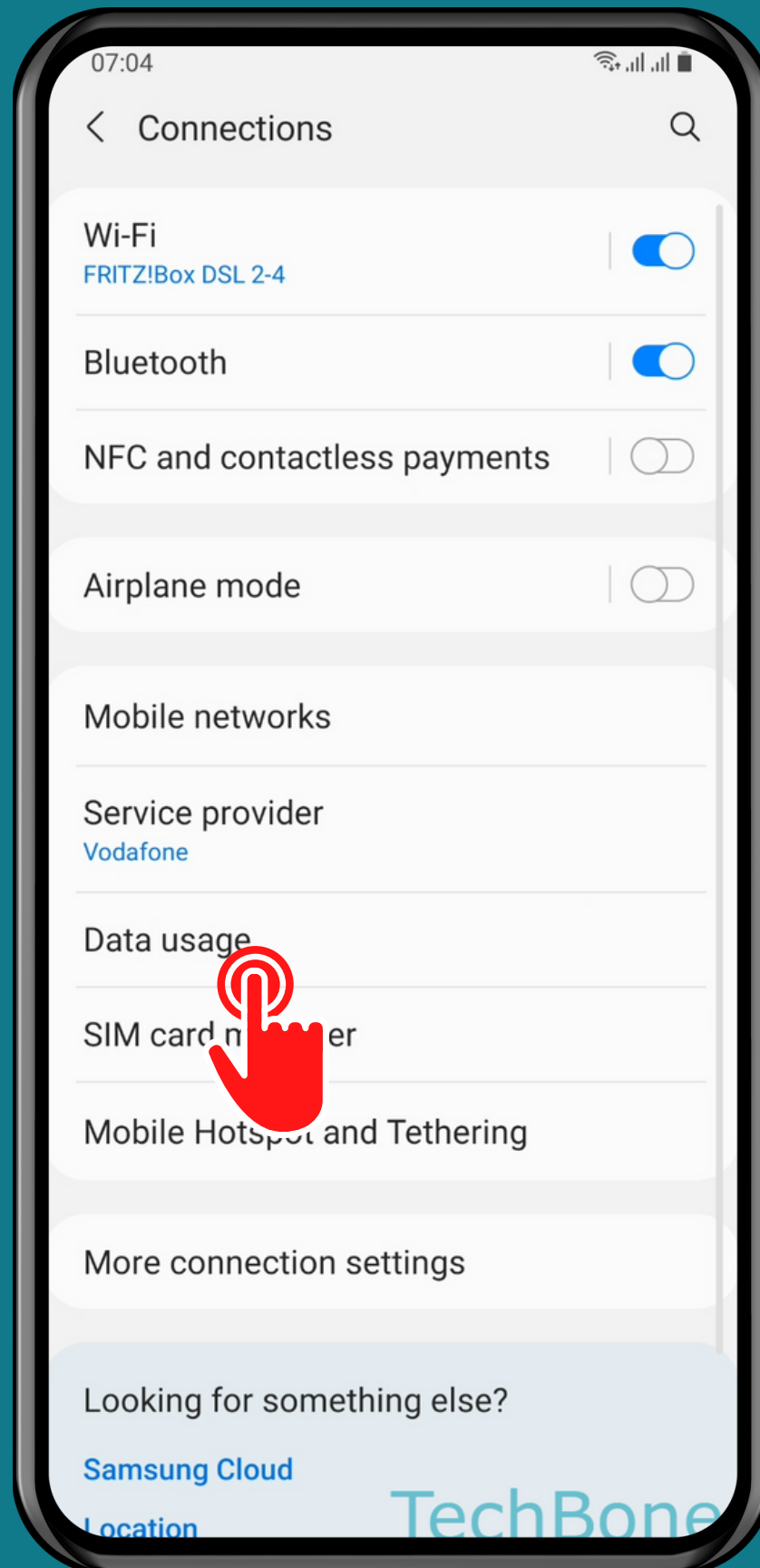
# HOW TO CHANGE DATA WARNING LIMIT



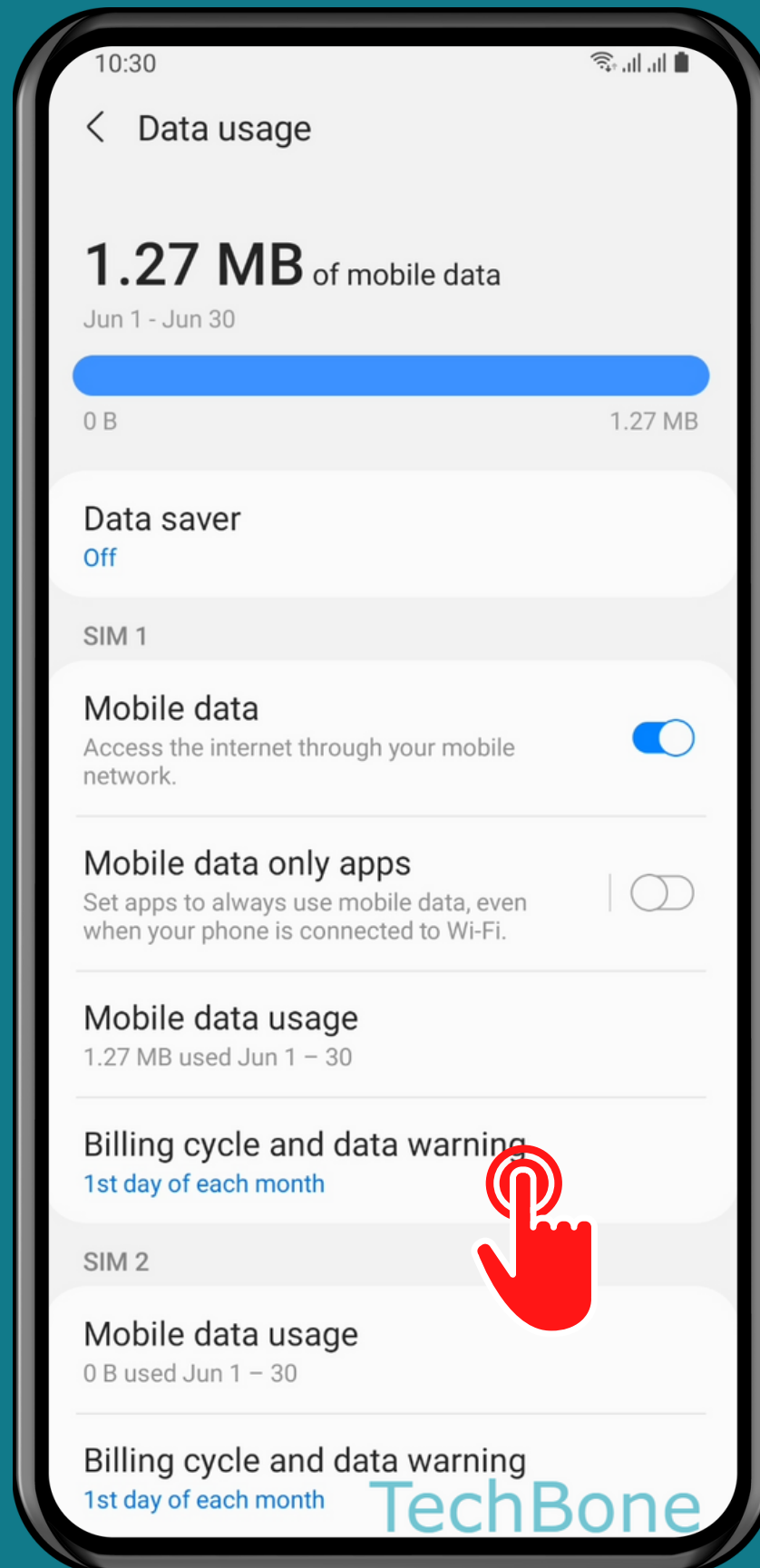
Tap on  
Settings



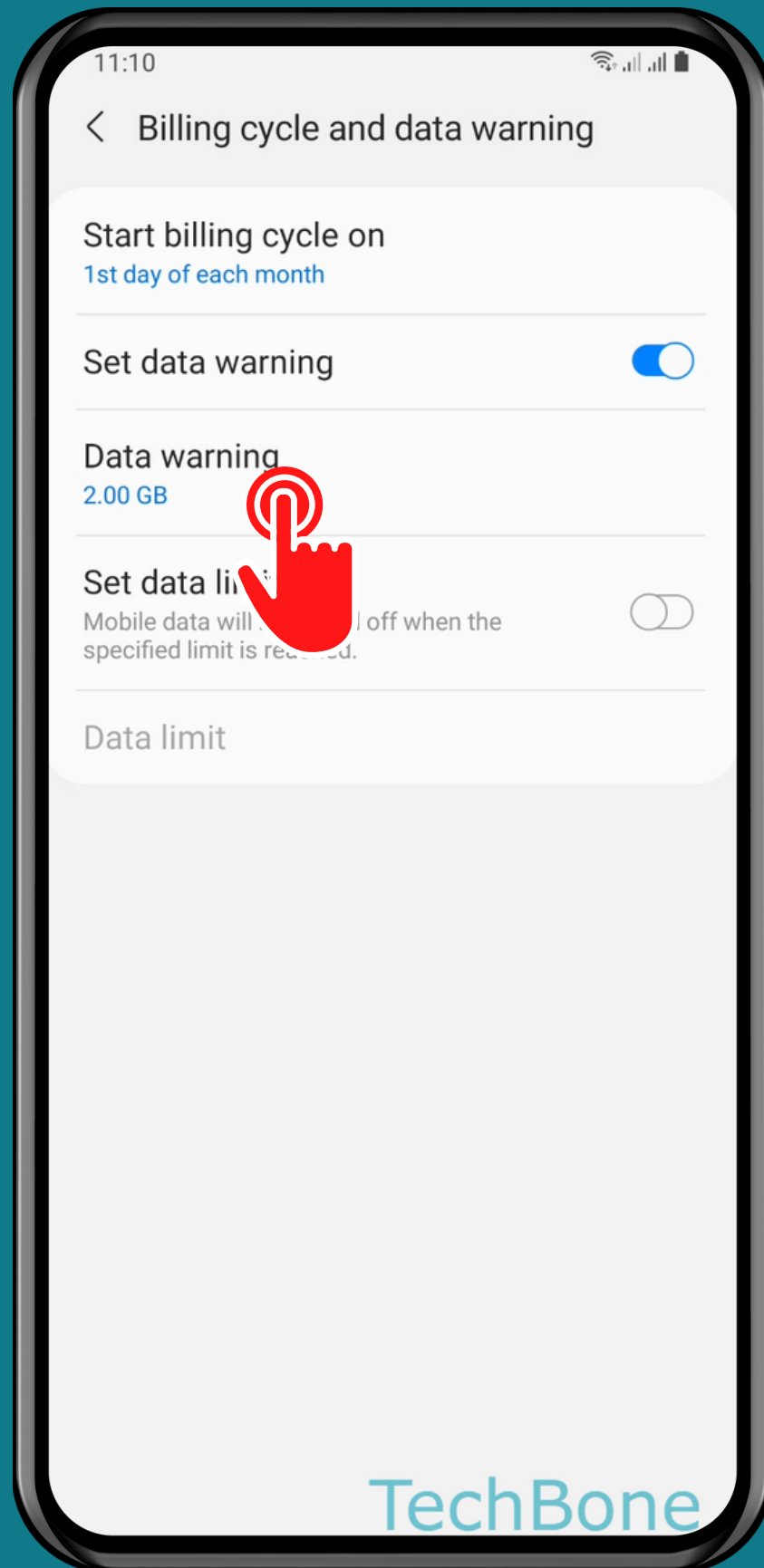
# Tap on Connections



# Tap on Data usage

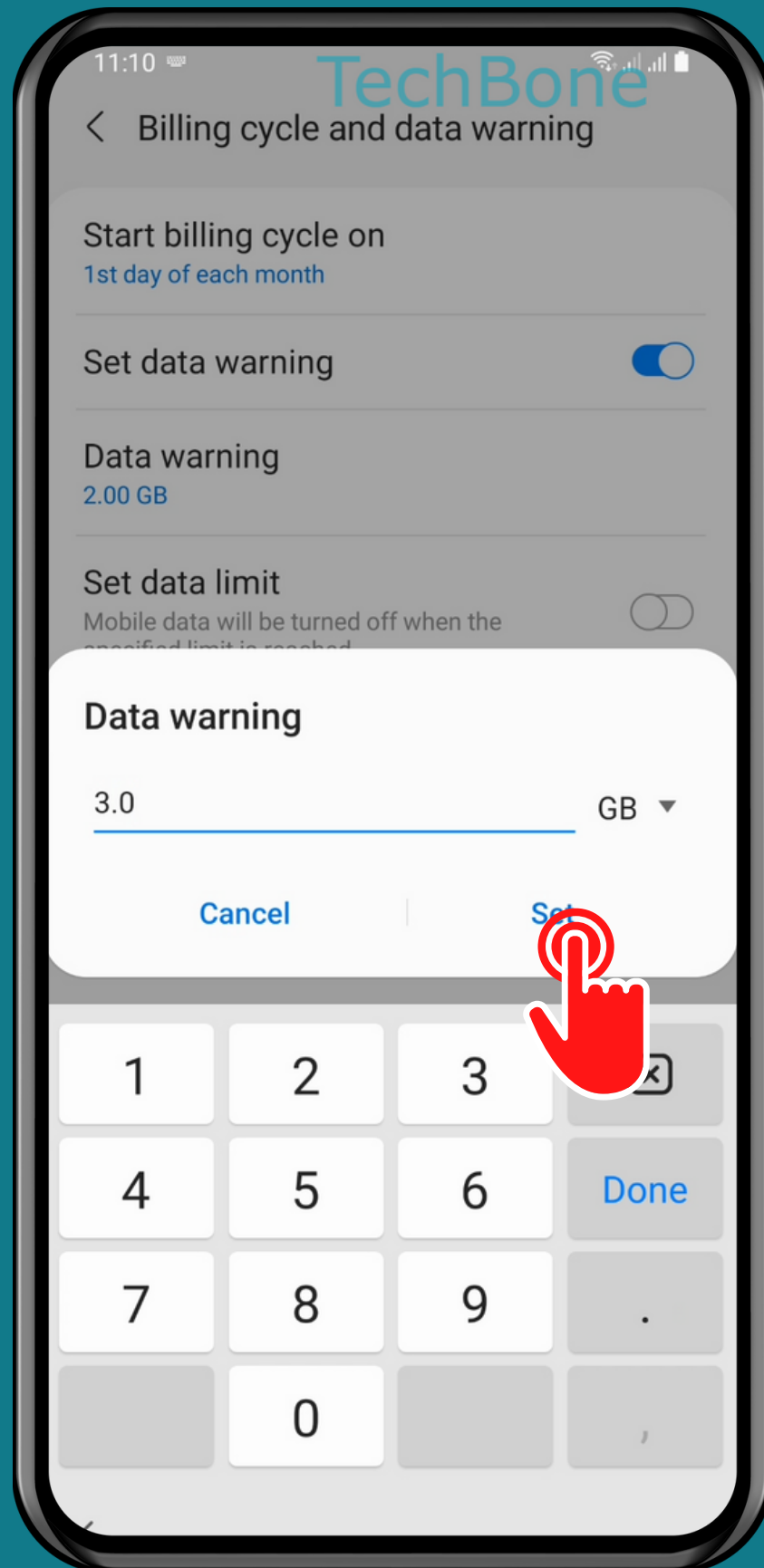


Tap on  
Billing cycle and data  
warning



Tap on  
Data warning





Set the  
Data warning limit  
and tap **Set**

Done!