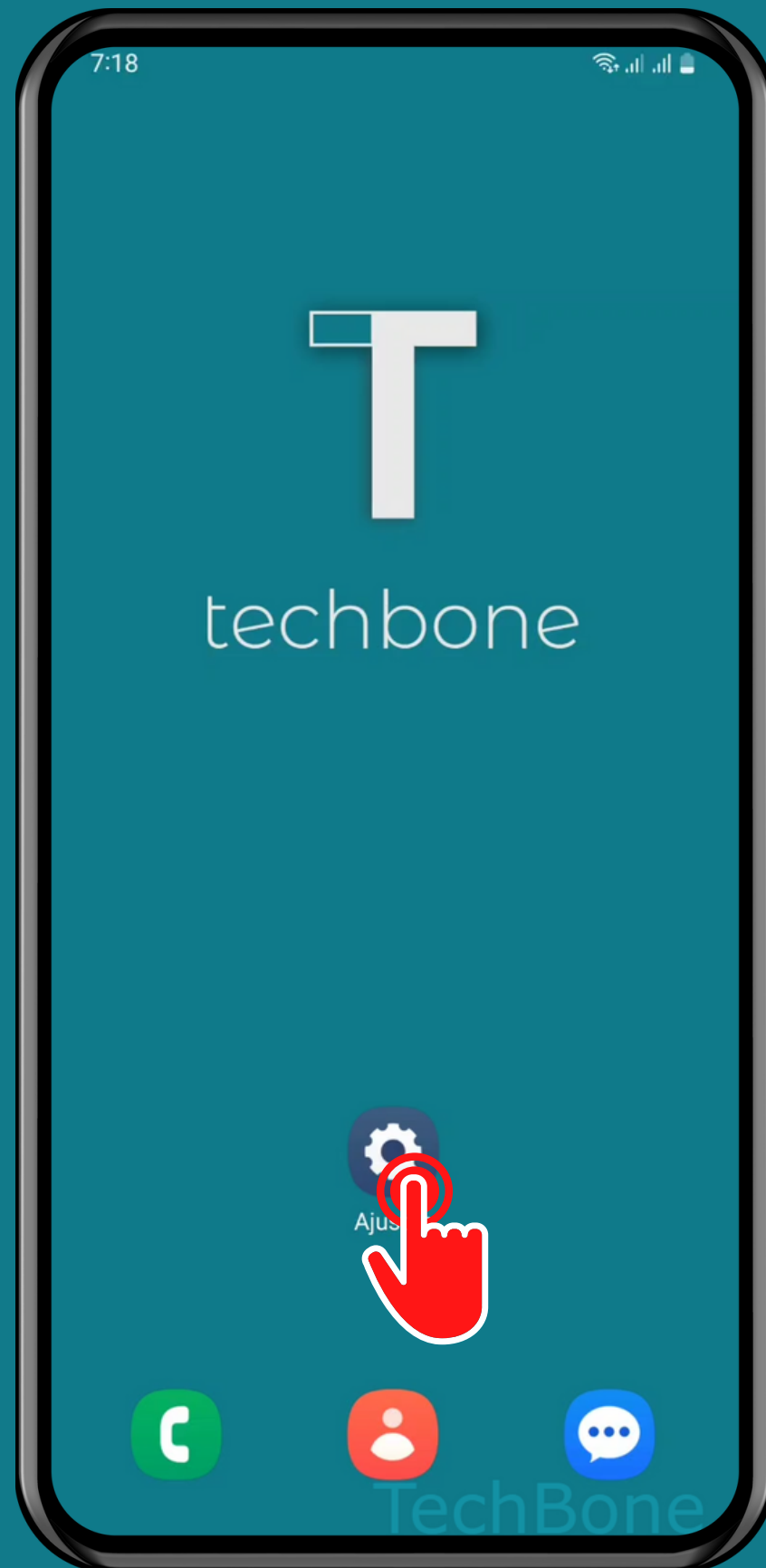


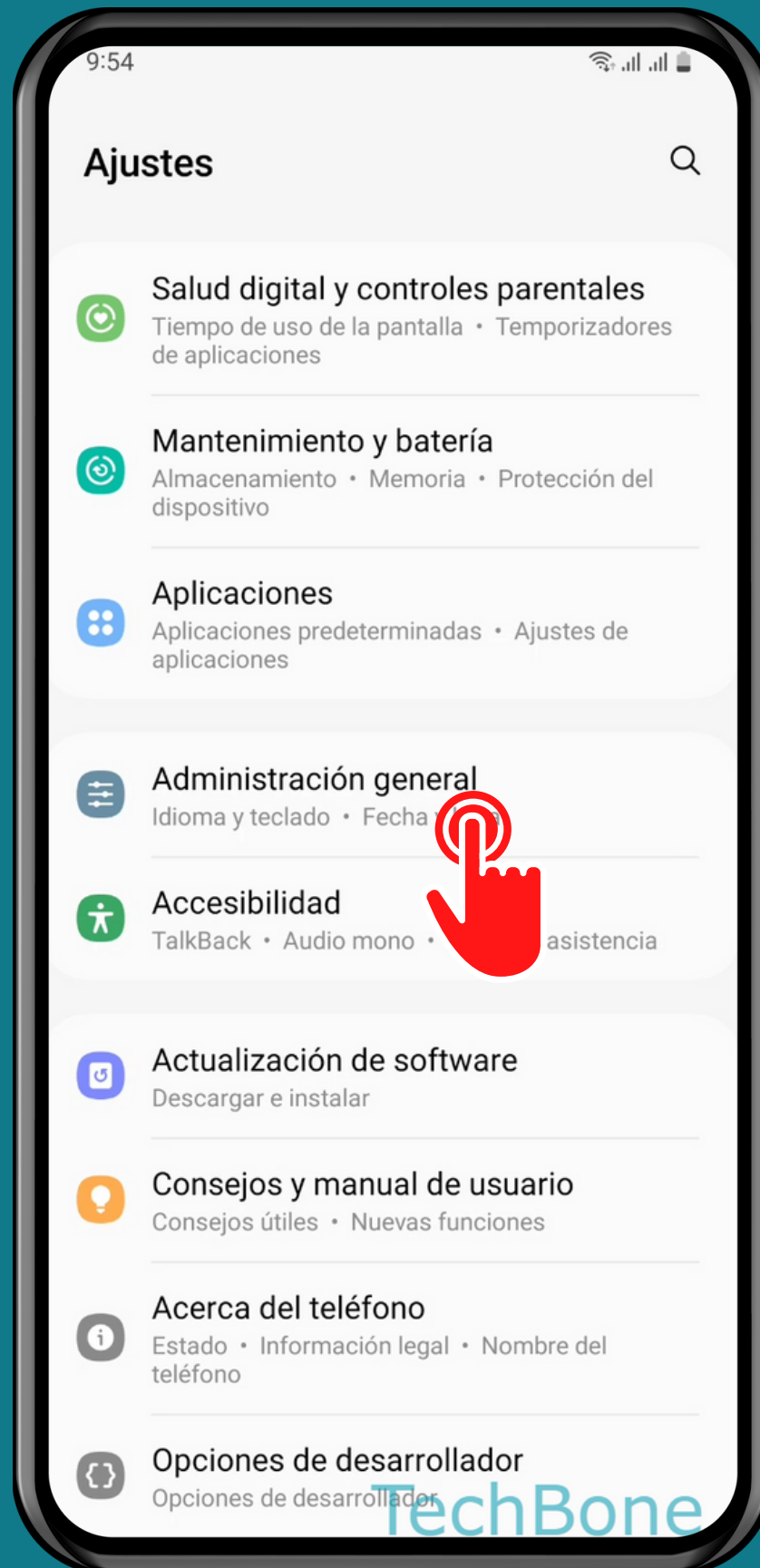
SAMSUNG

Android 13 - One UI 5

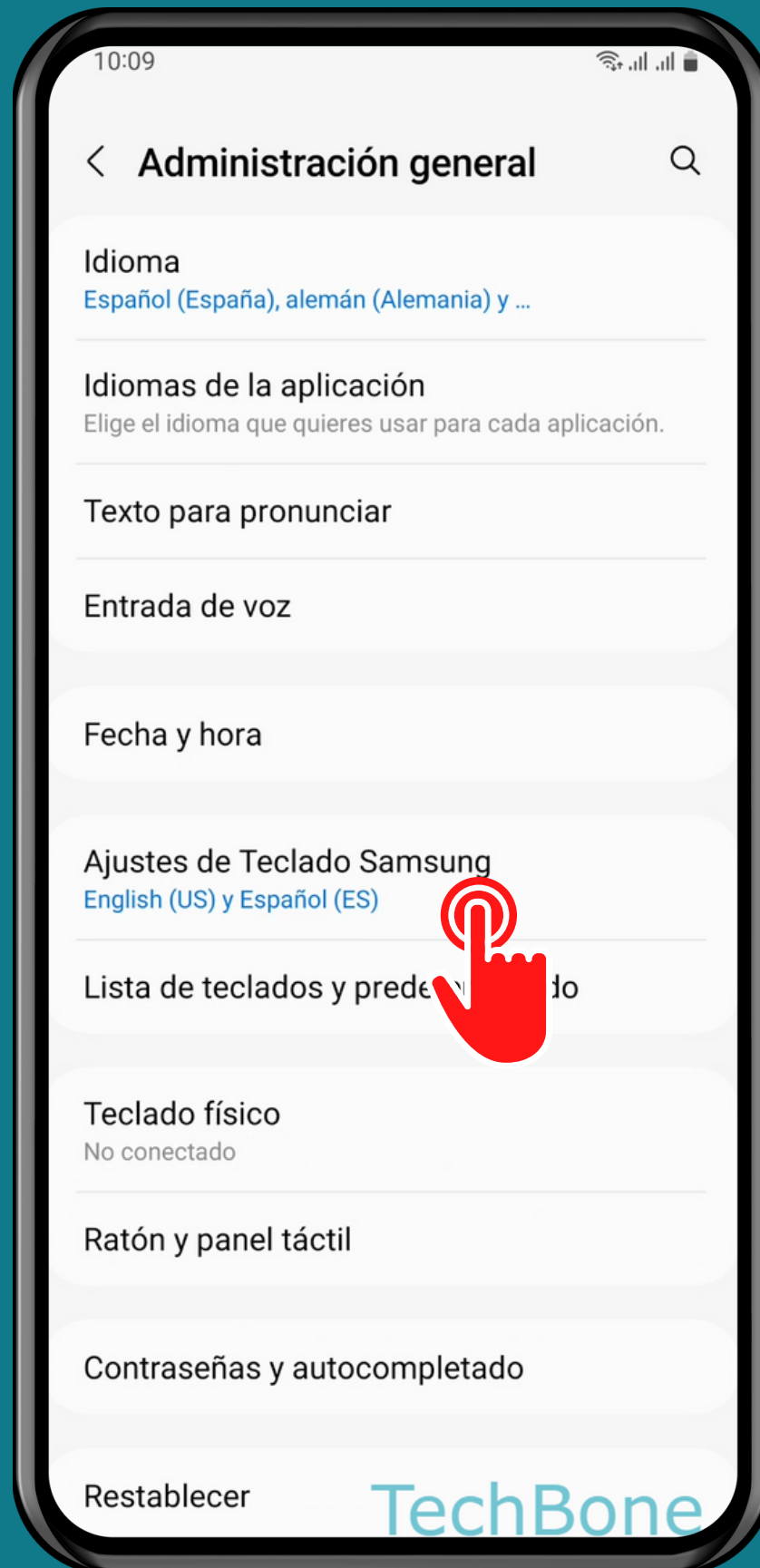
# CAMBIAR EL DISEÑO DEL TECLADO



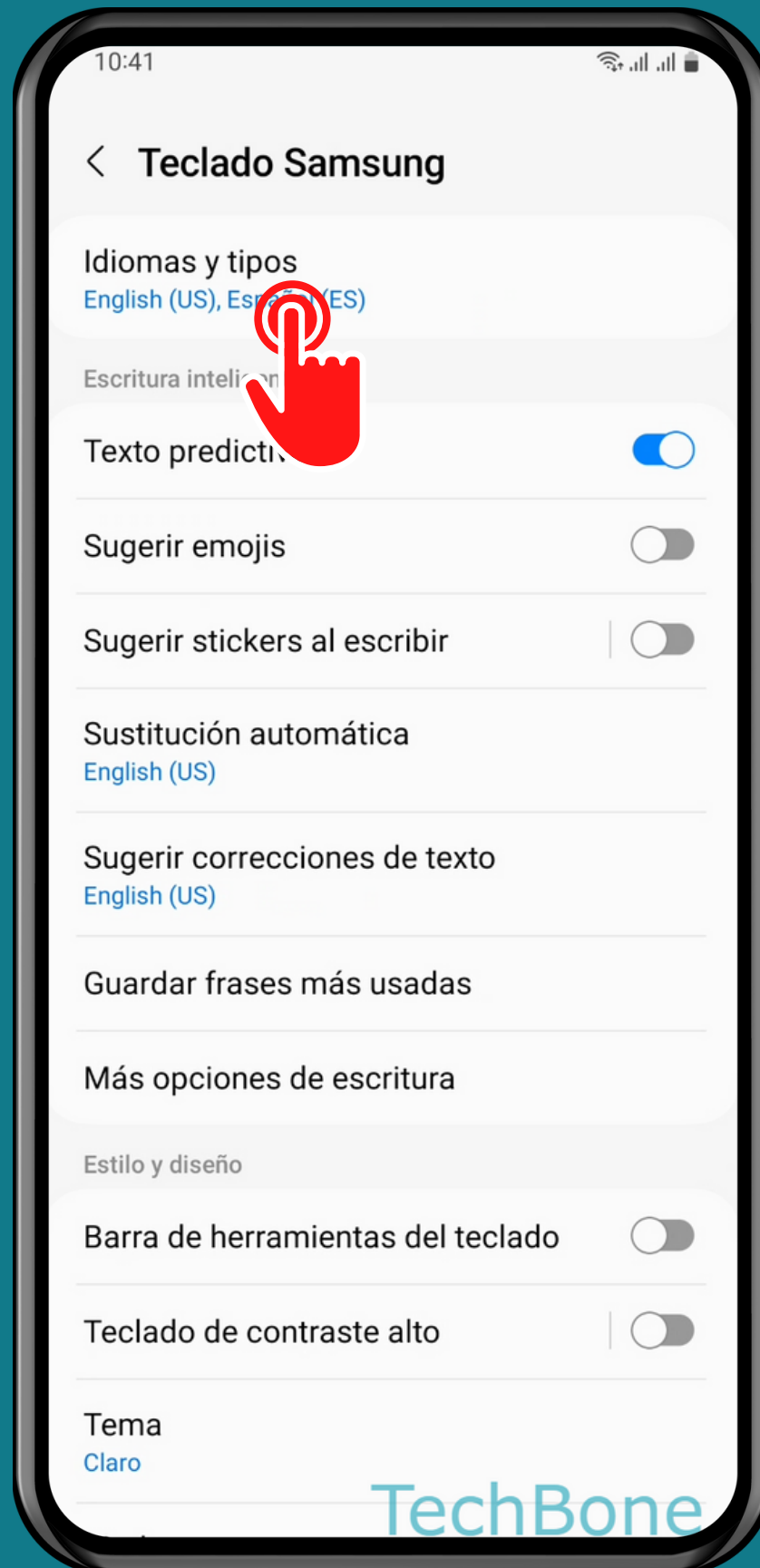
# Abre los Ajustes



# Presiona Administración general

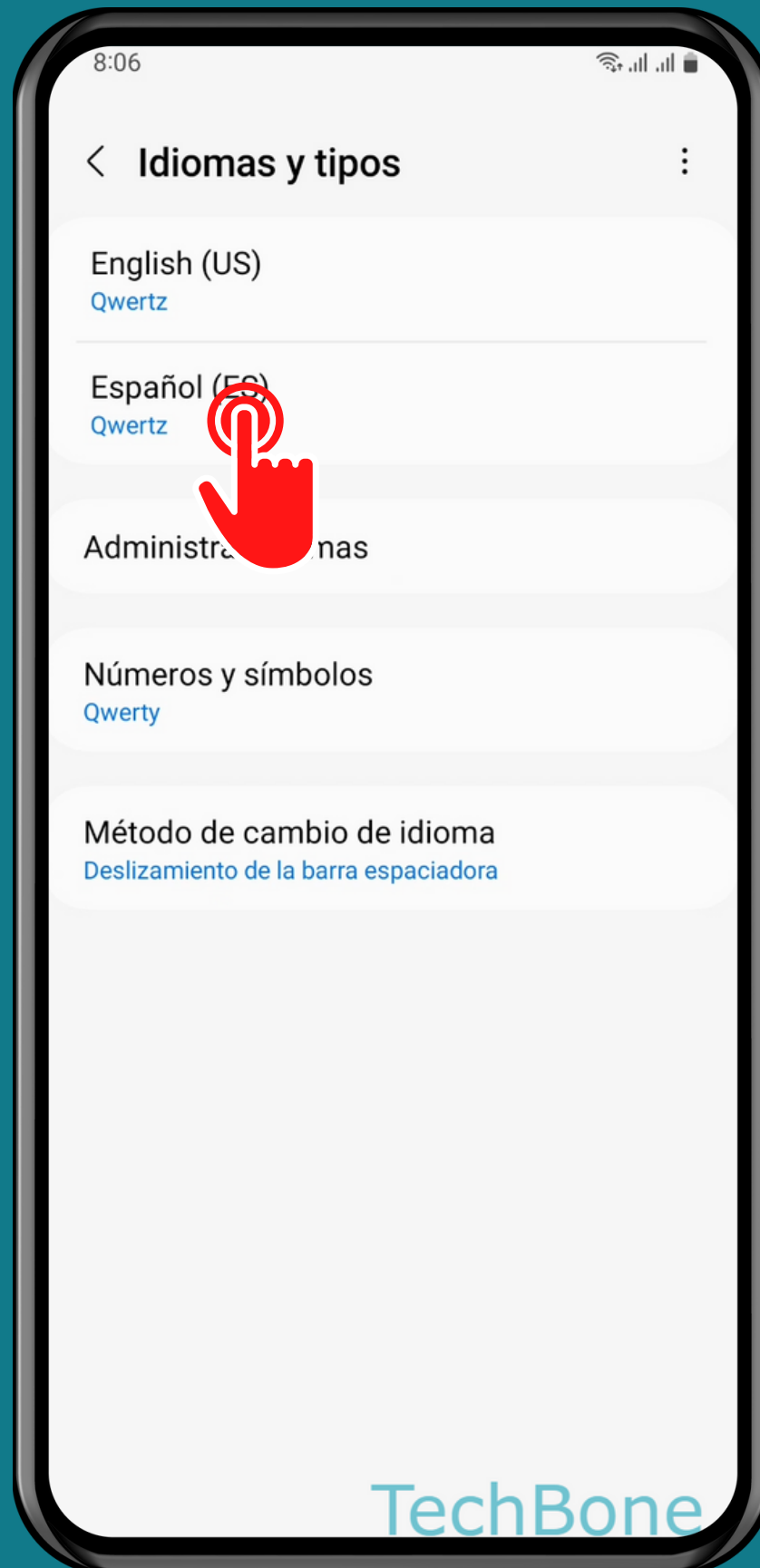


# Presiona Ajustes de Teclado Samsung

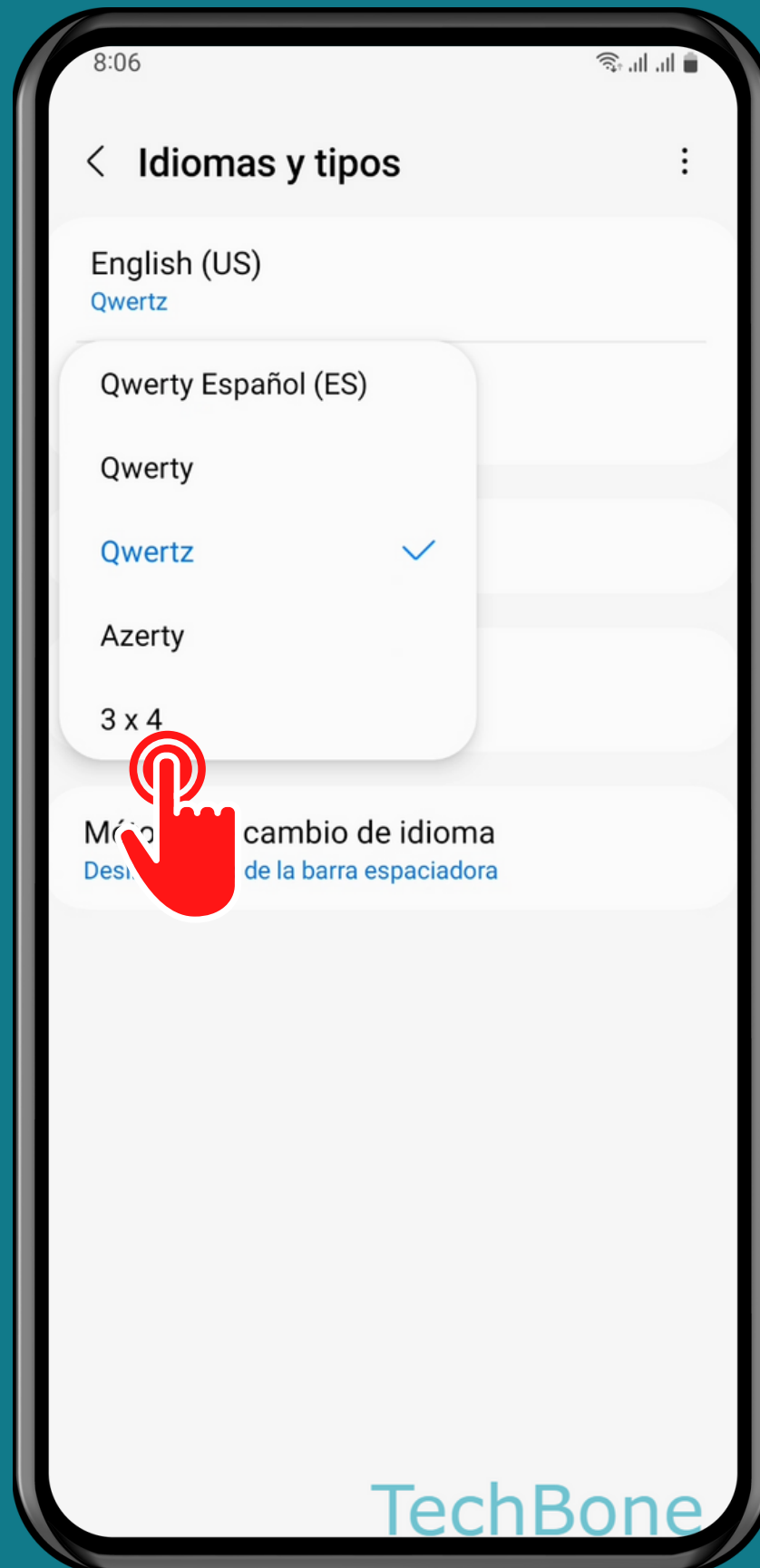


# Presiona

## Idiomas y tipos



# Selecciona un Idioma



# Selecciona un Diseño

¡Listo!