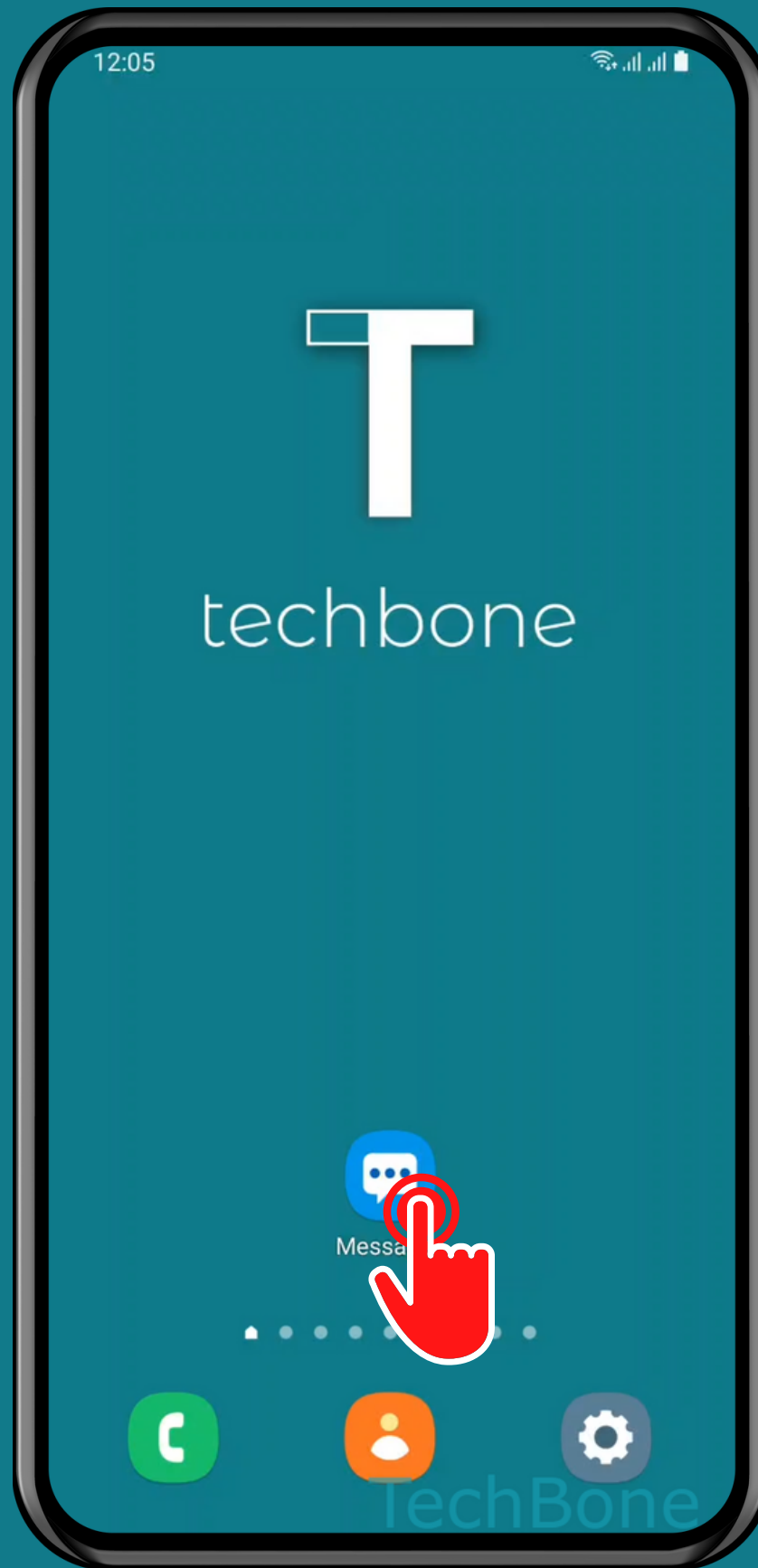


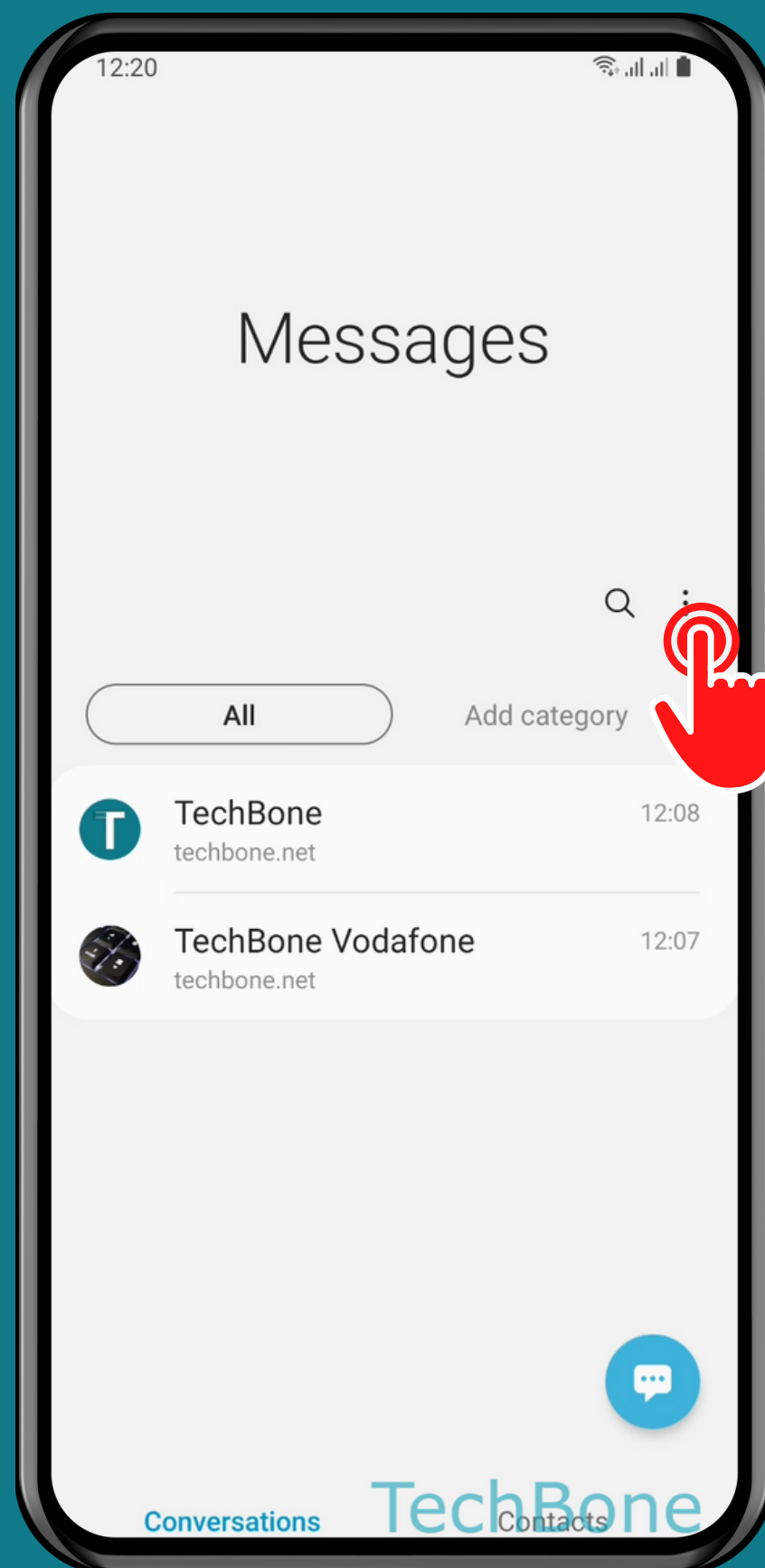
# SAMSUNG

Messages - Android 11 - One UI 3

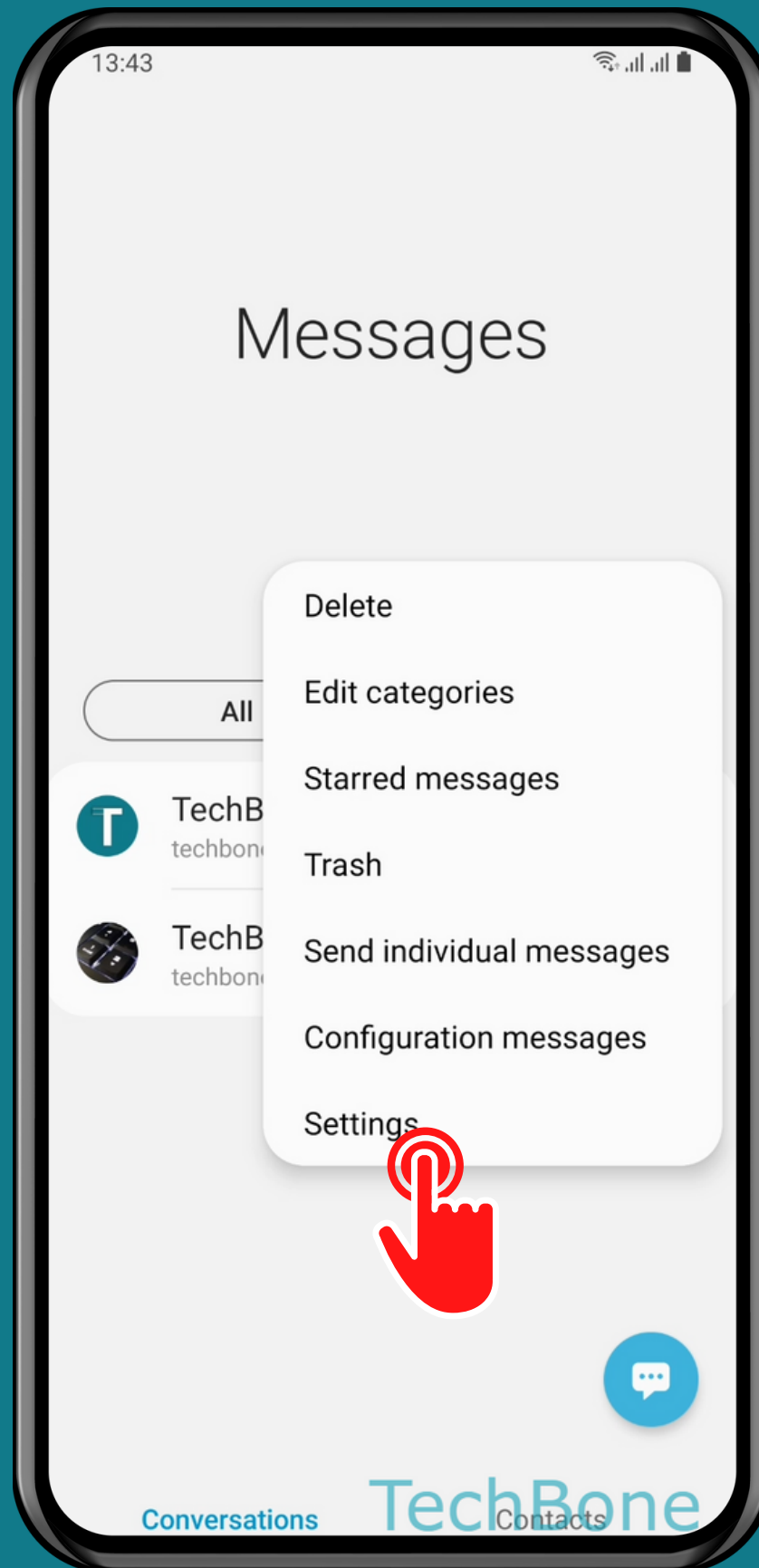
# HOW TO TURN ON/OFF AUTO-DOWNLOAD MMS



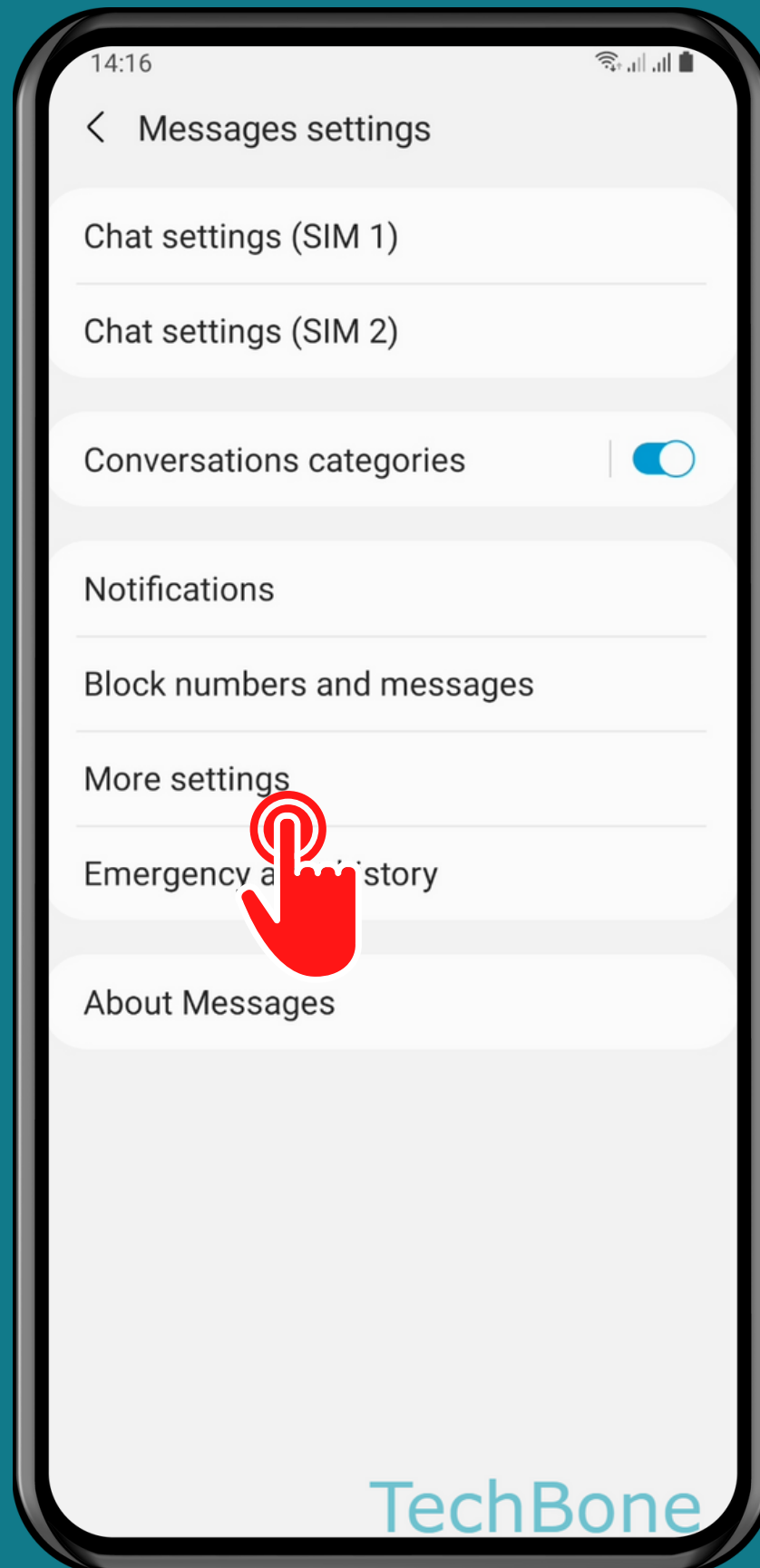
Tap on  
Messages



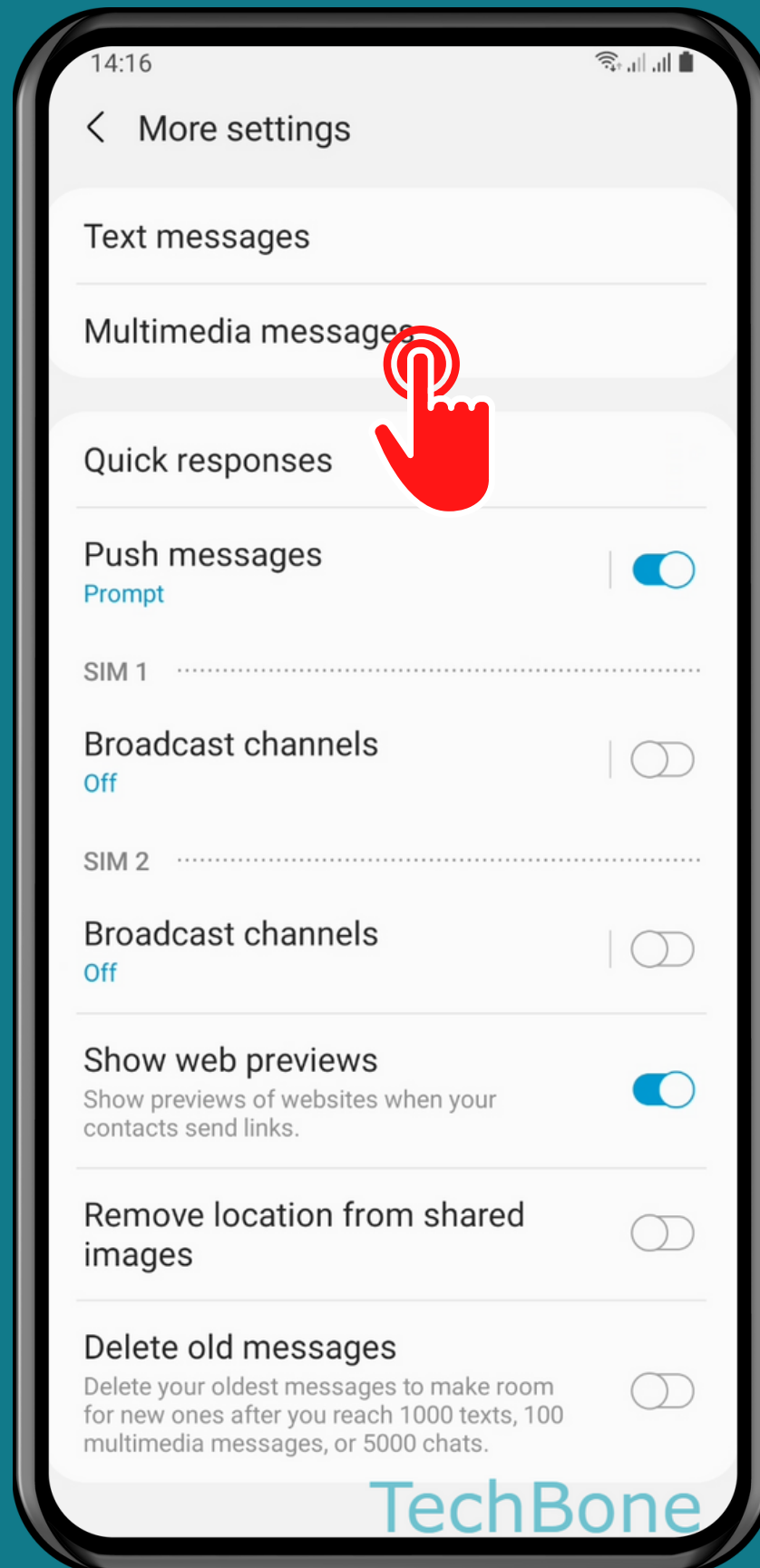
# Open the Menu



Tap on  
Settings

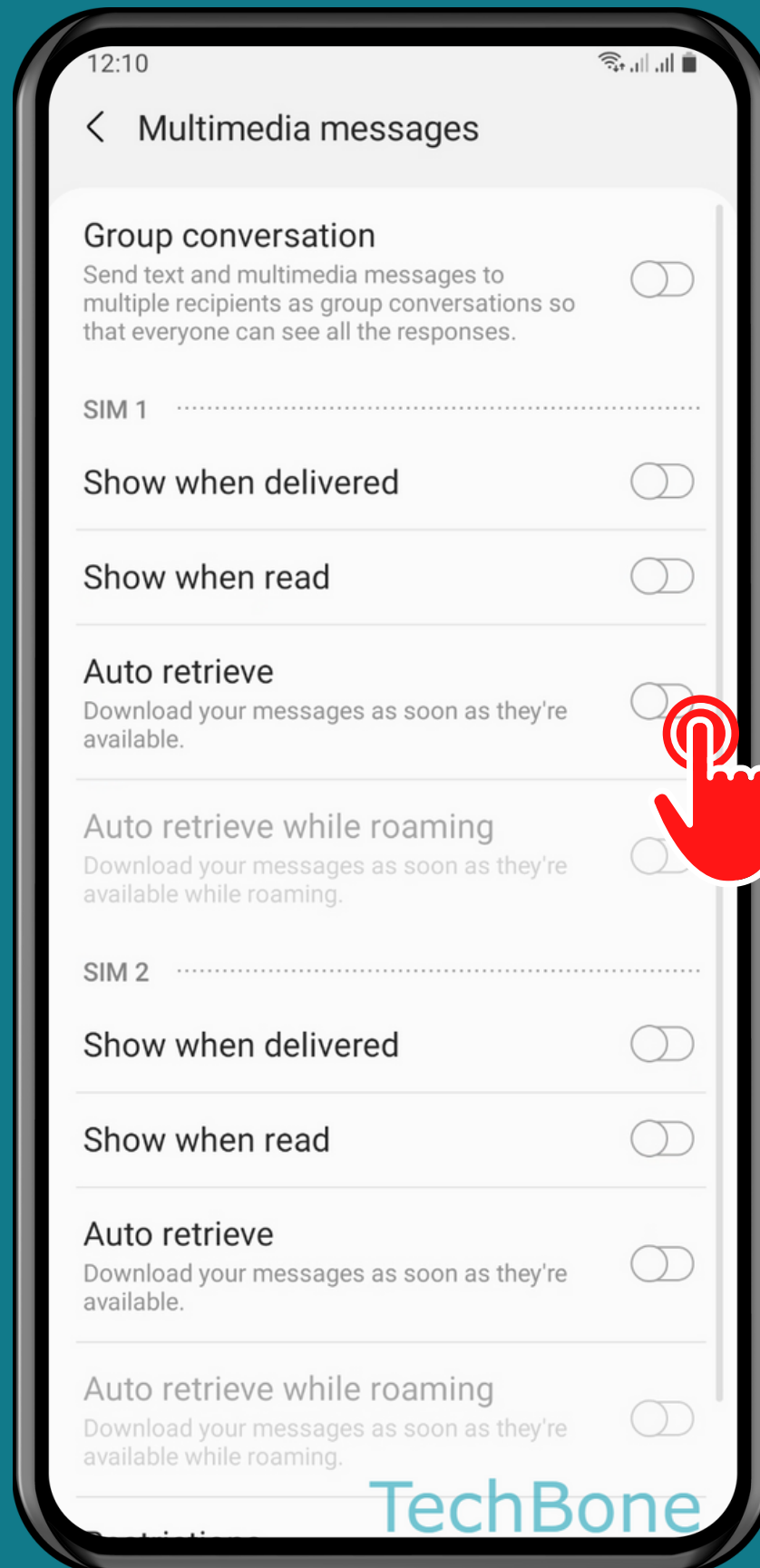


Tap on  
More settings



Tap on  
Multimedia messages





# Turn On/Off Auto retrieve

# Done!