

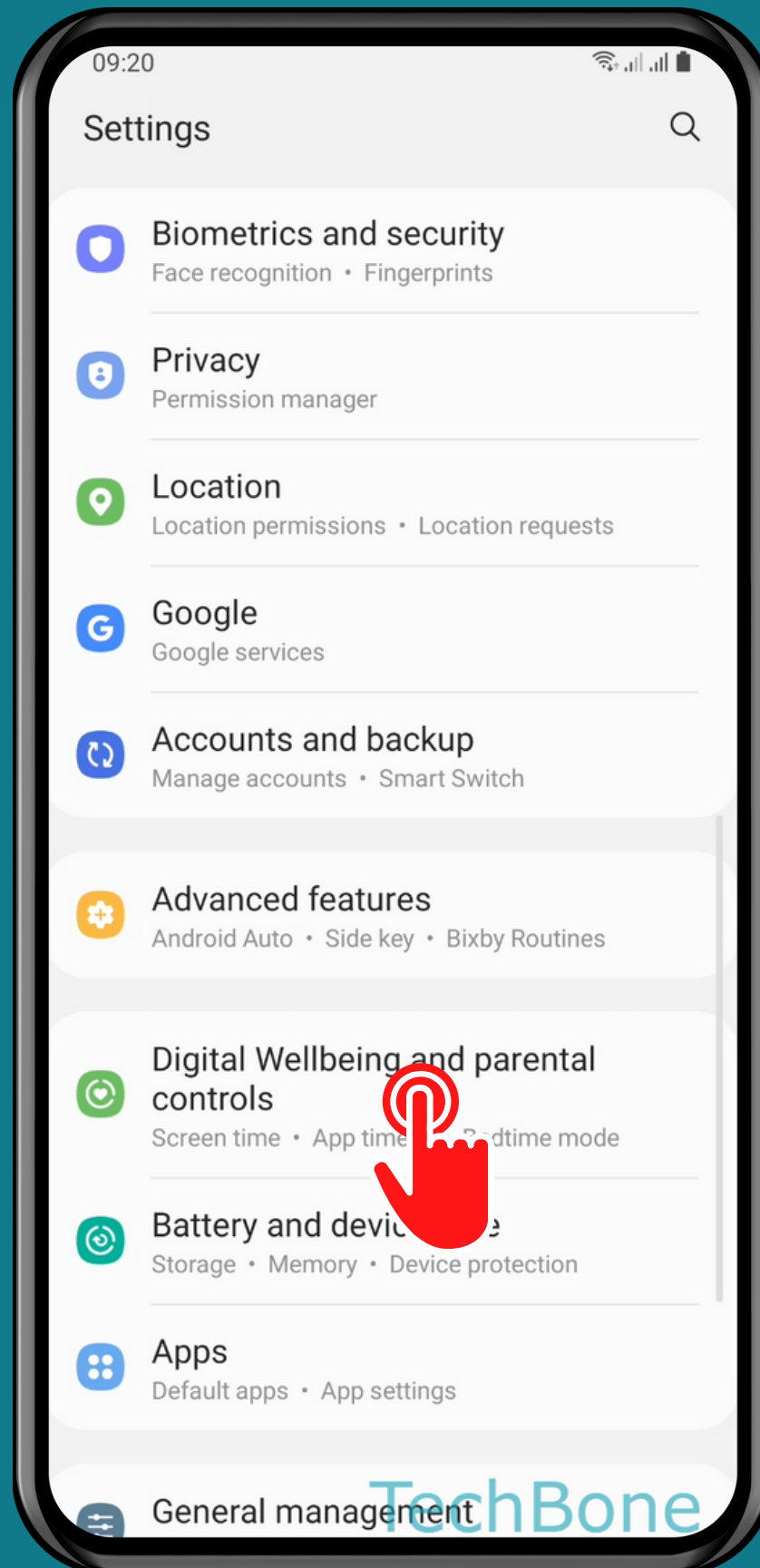
SAMSUNG

Android 11 - One UI 3

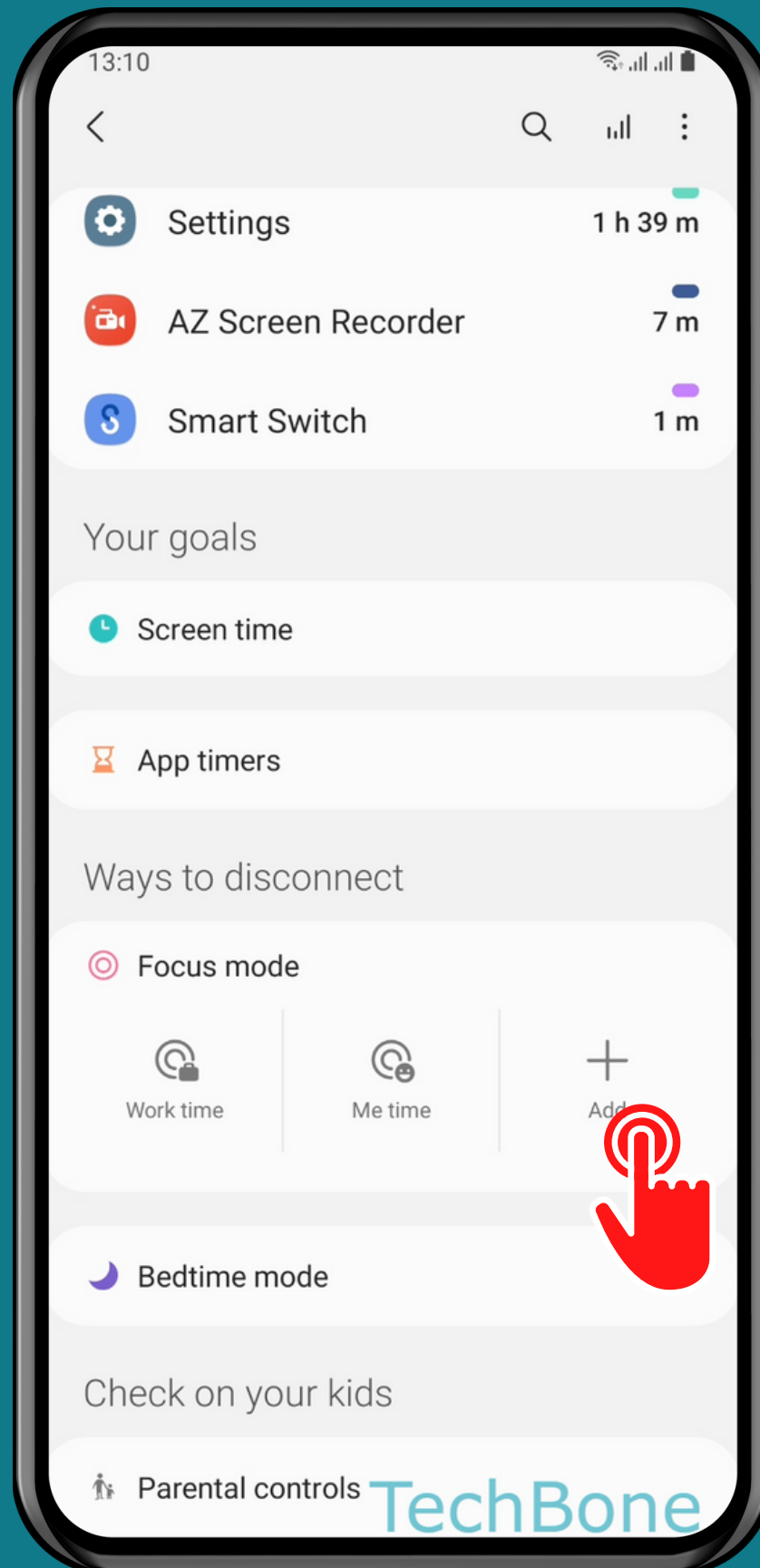
HOW TO SET UP FOCUS MODE



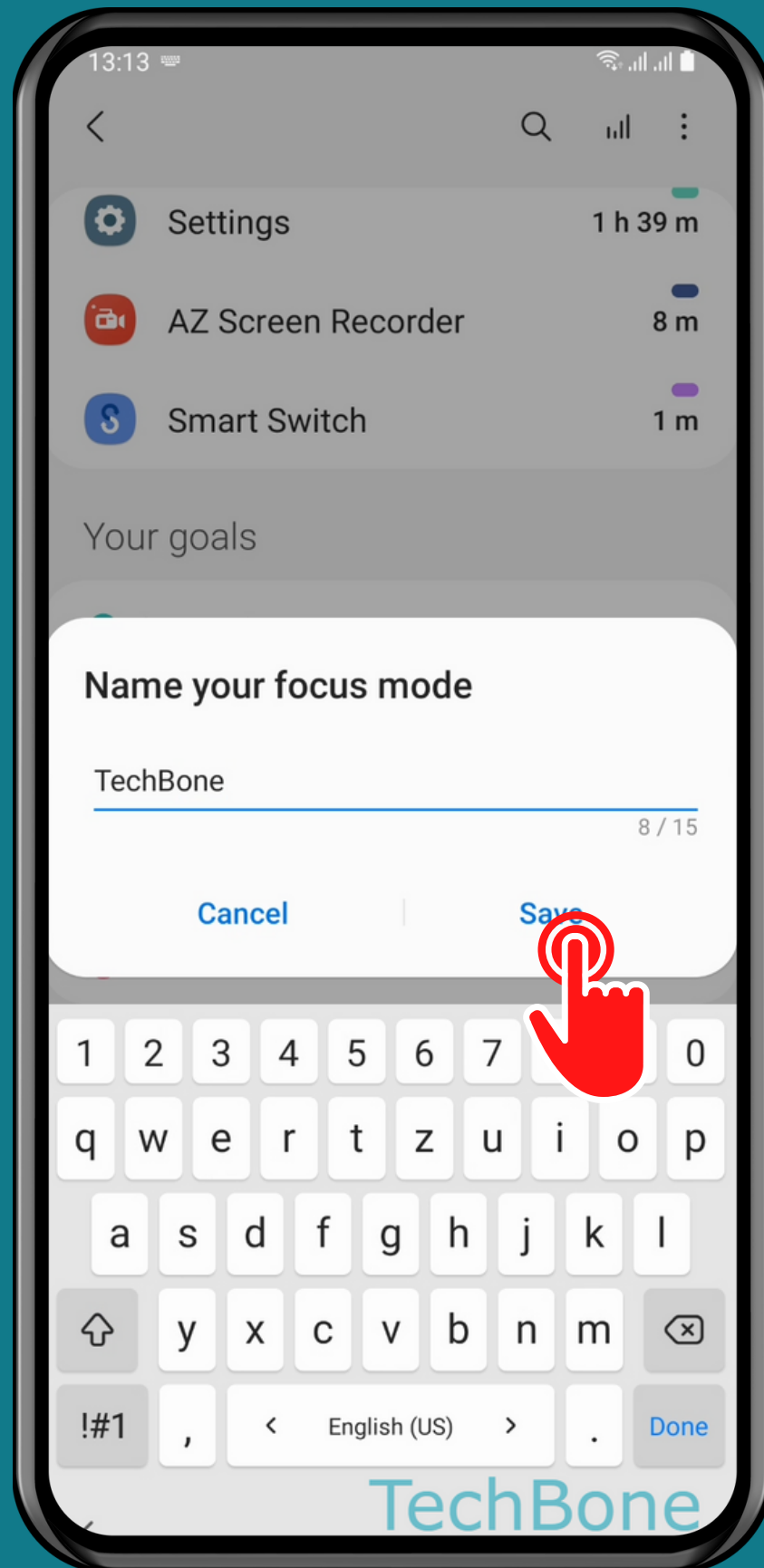
Tap on
Settings



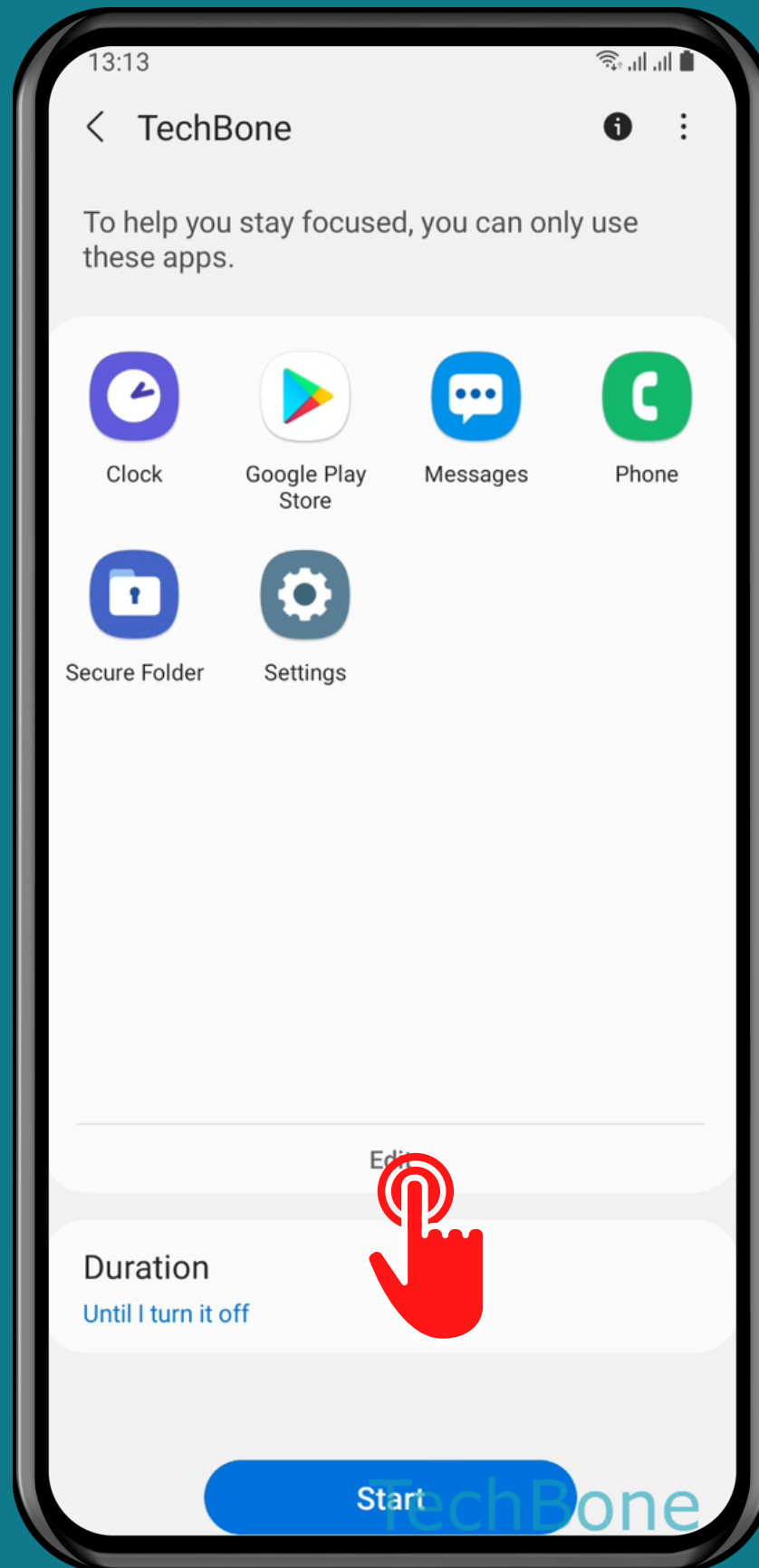
Tap on Digital Wellbeing and parental controls



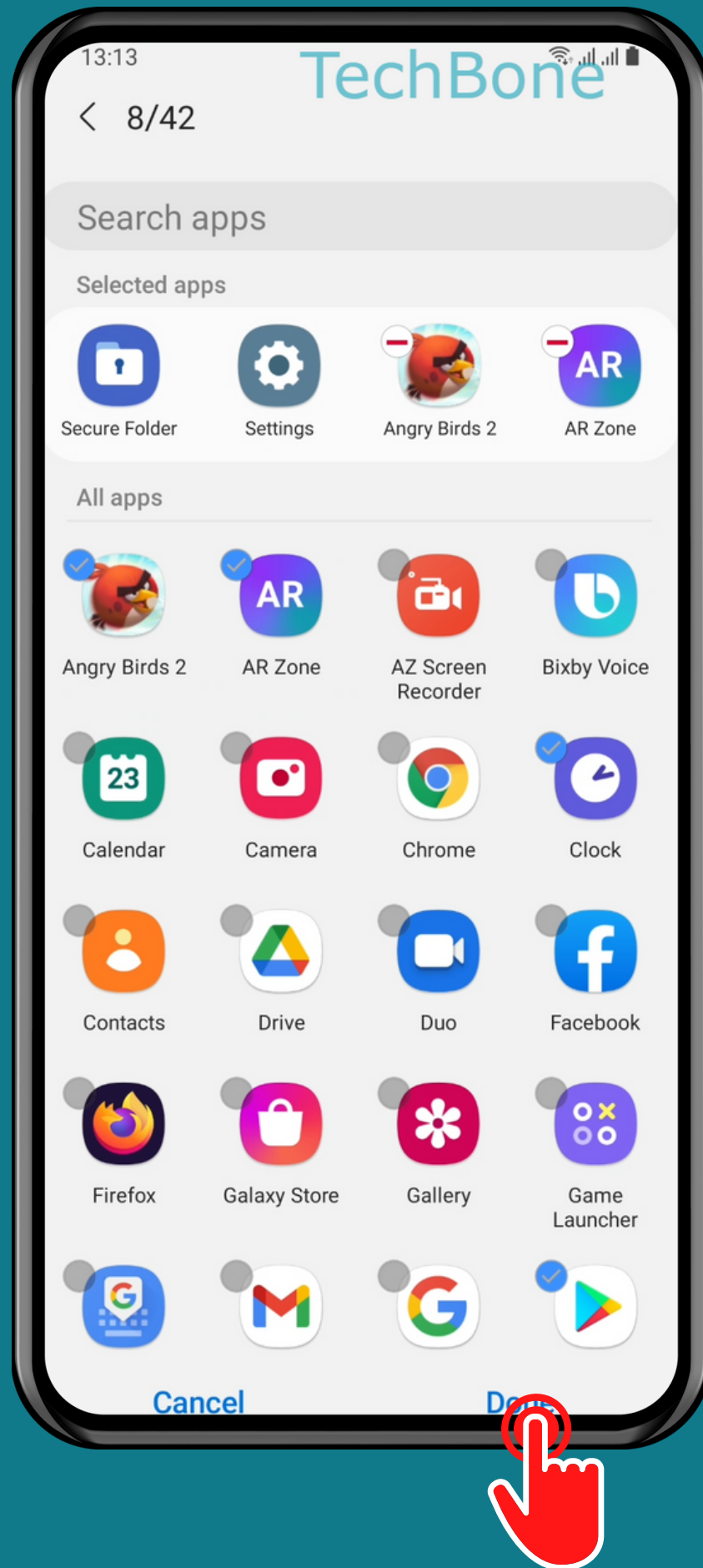
Choose **Work/Me time**
or tap on **Add**



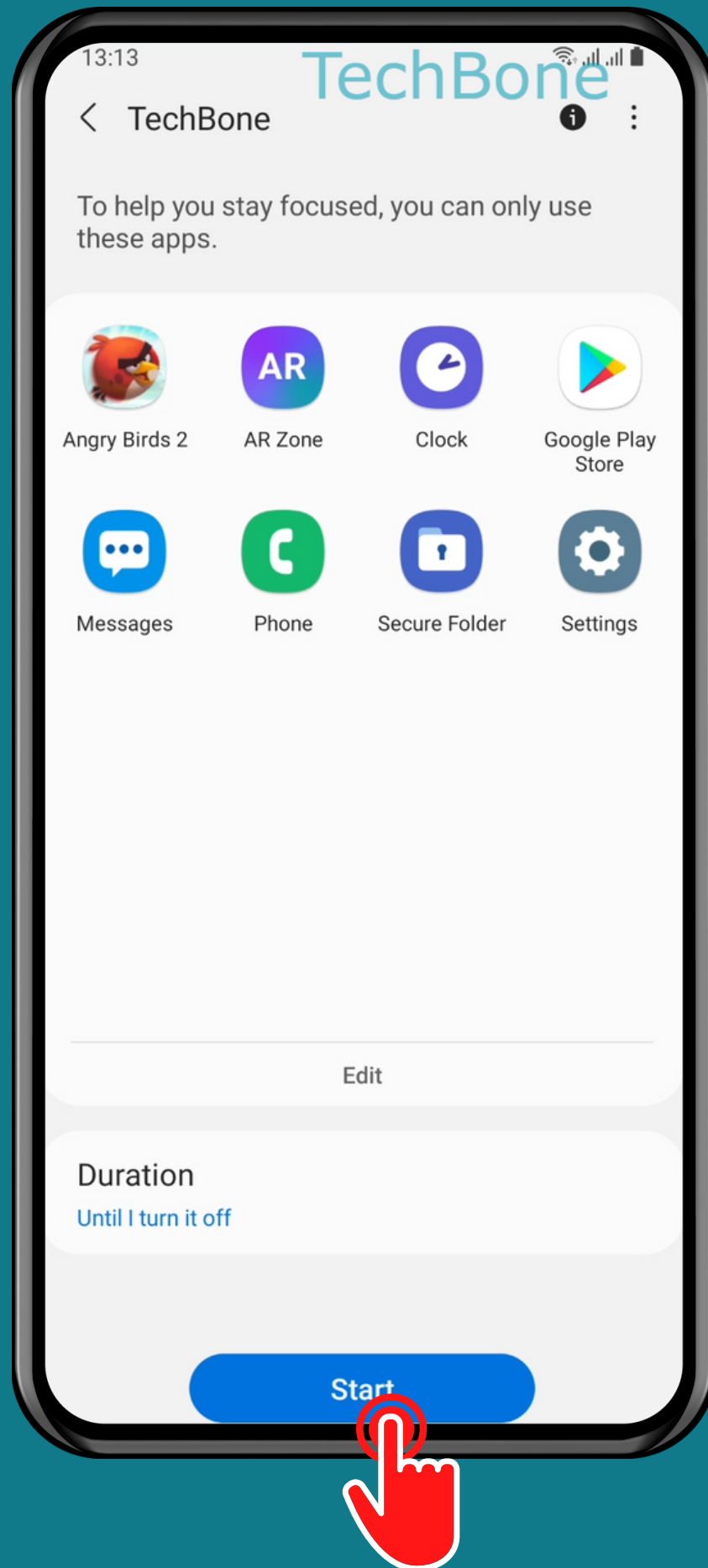
Enter a **Name** and
tap **Save**



Tap on
Edit



Choose one or more
Apps and tap Done



Set the **Duration** and
tap **Start**

Done!