

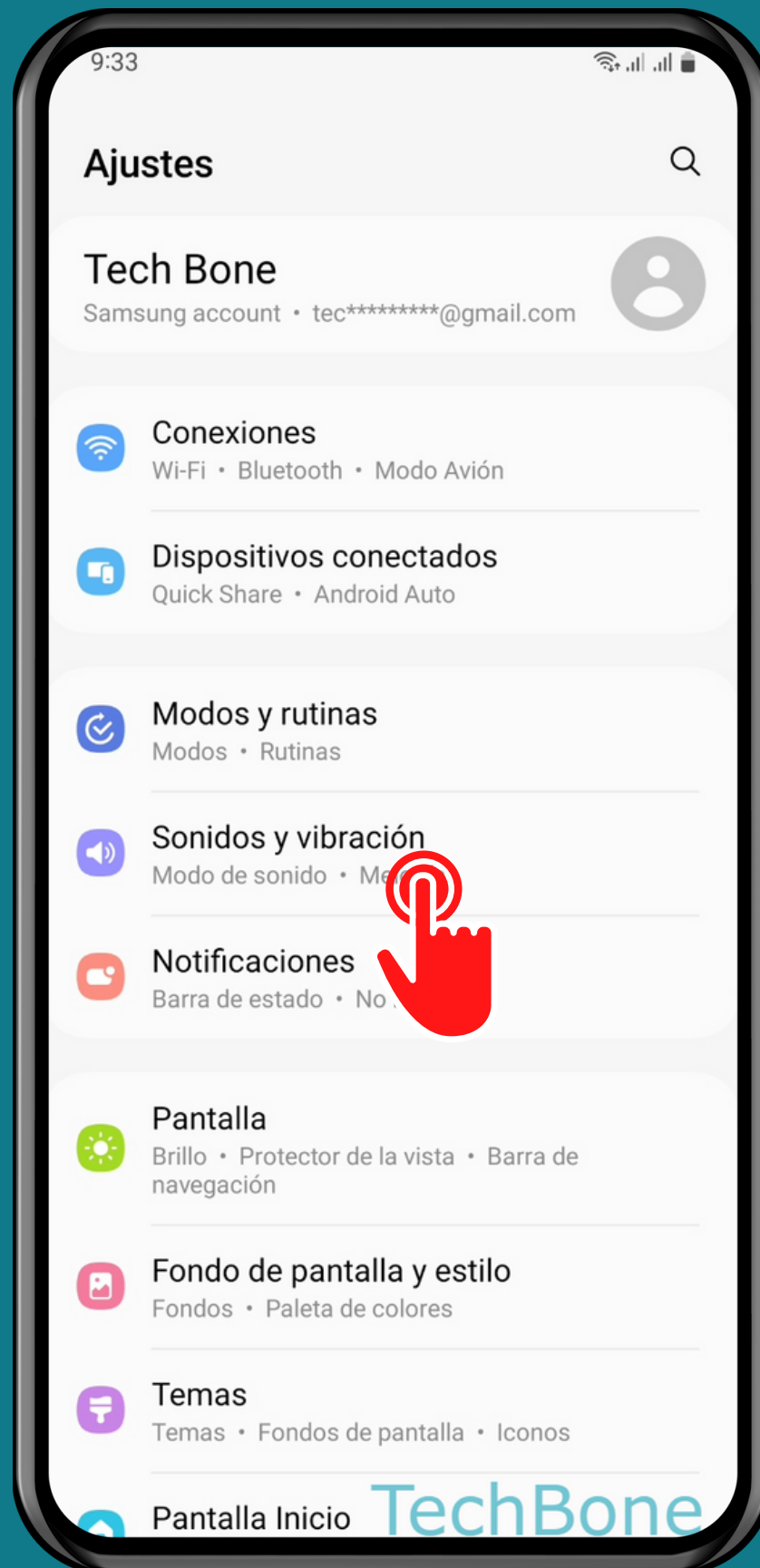
SAMSUNG

Android 13 - One UI 5

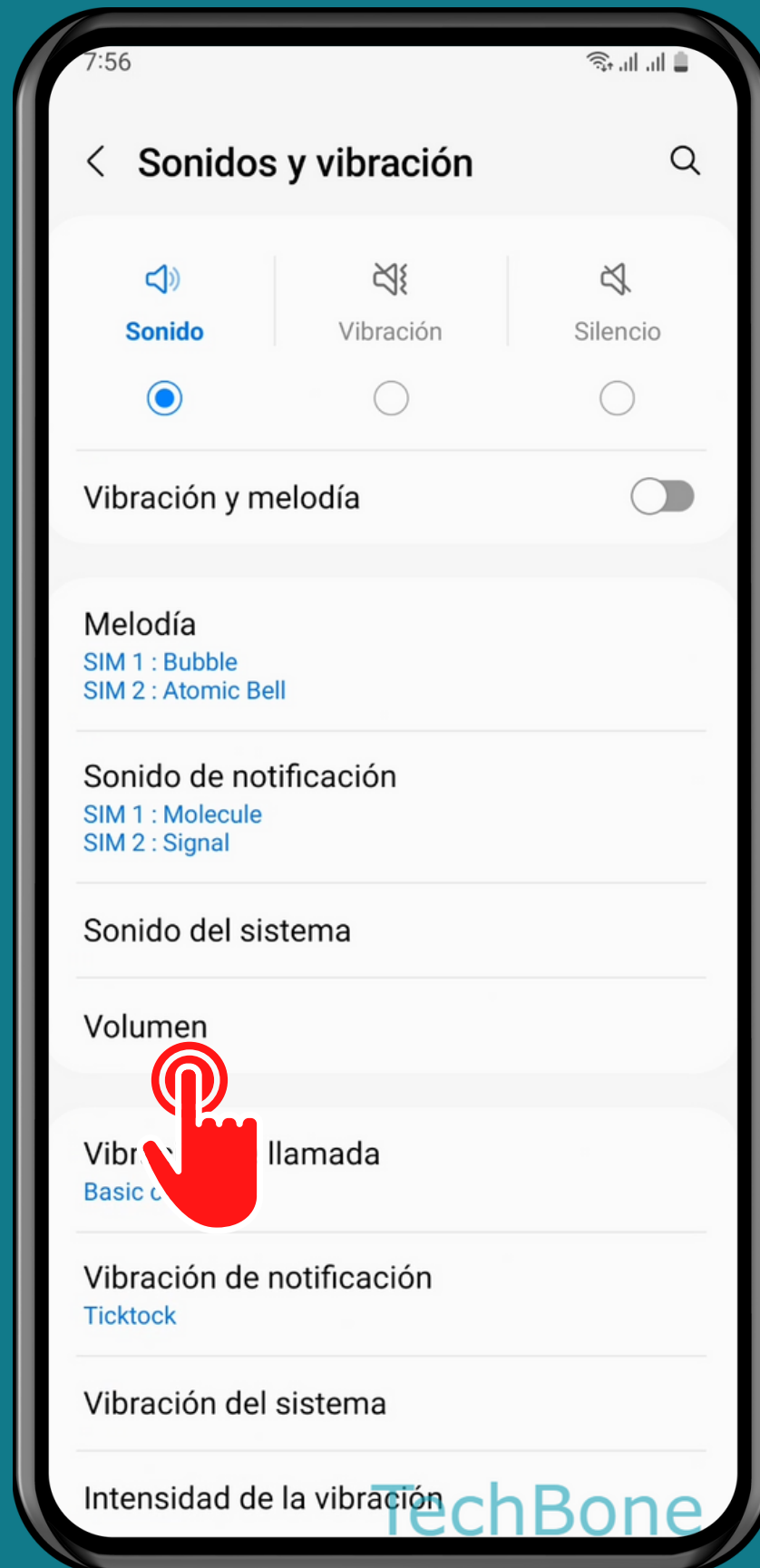
ACTIVAR O DESACTIVAR LÍMITE DE VOLUMEN MULTIMEDIA



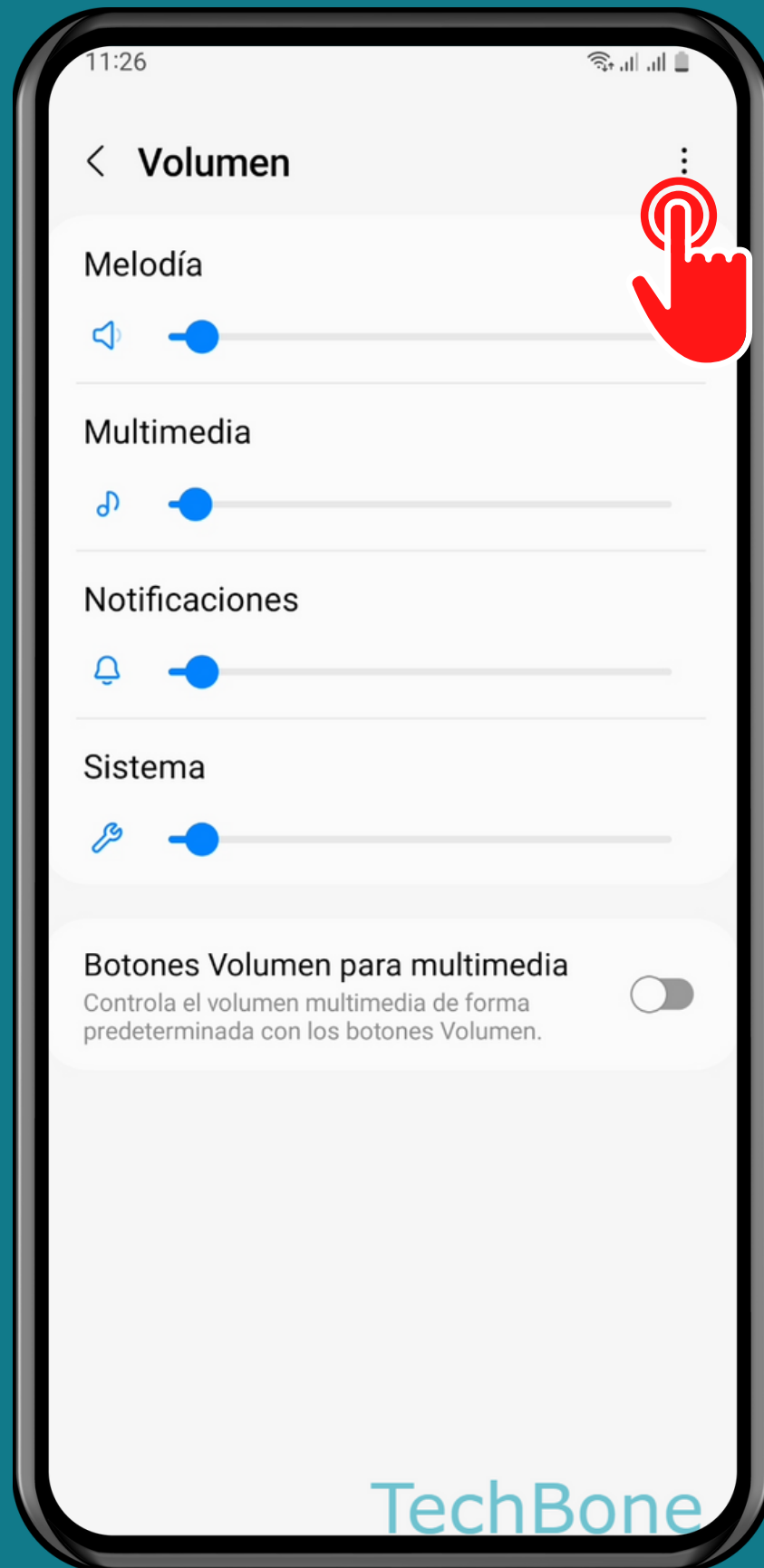
Abre los Ajustes



Presiona Sonidos y vibración

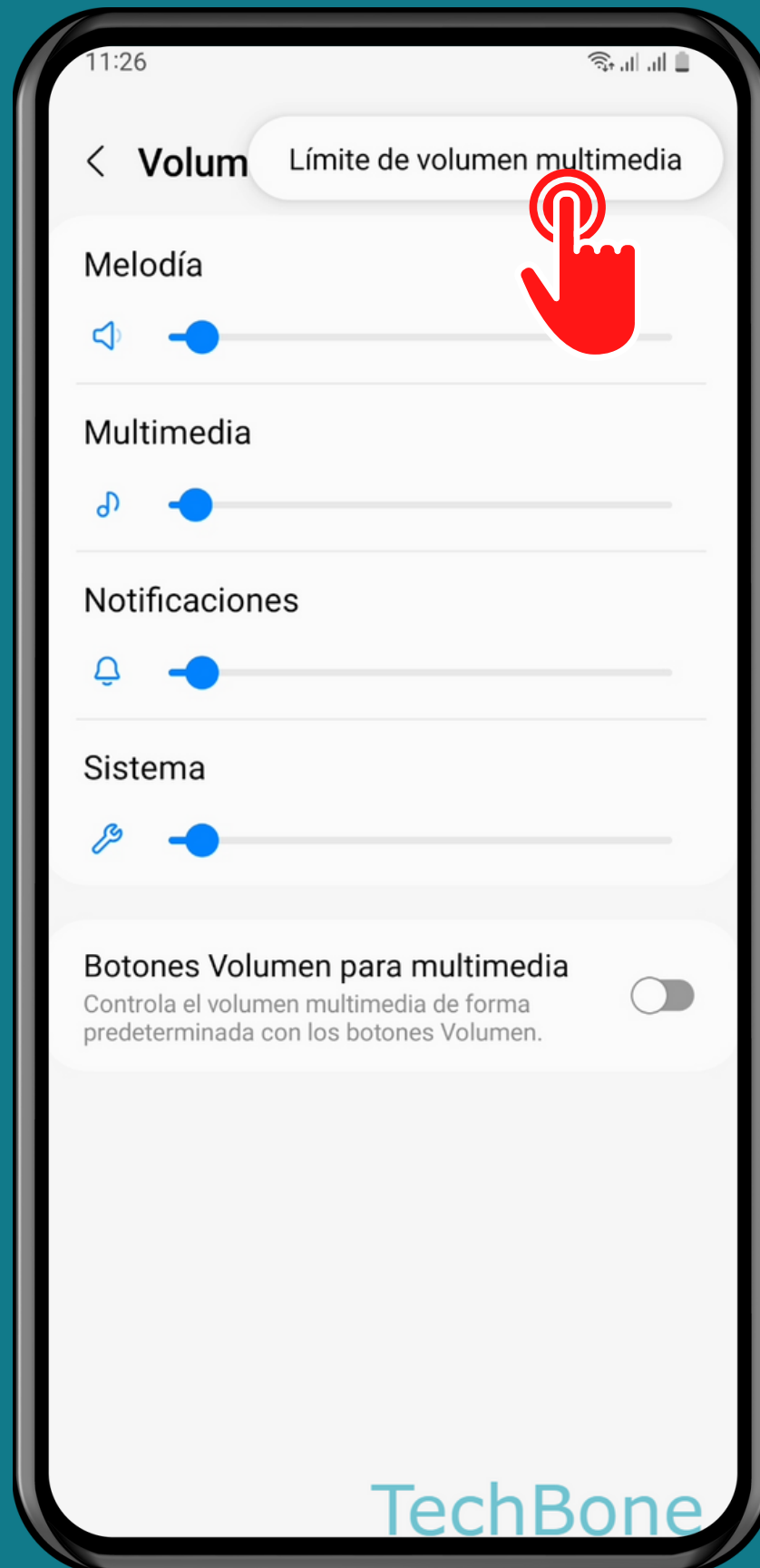


Presiona Volumen

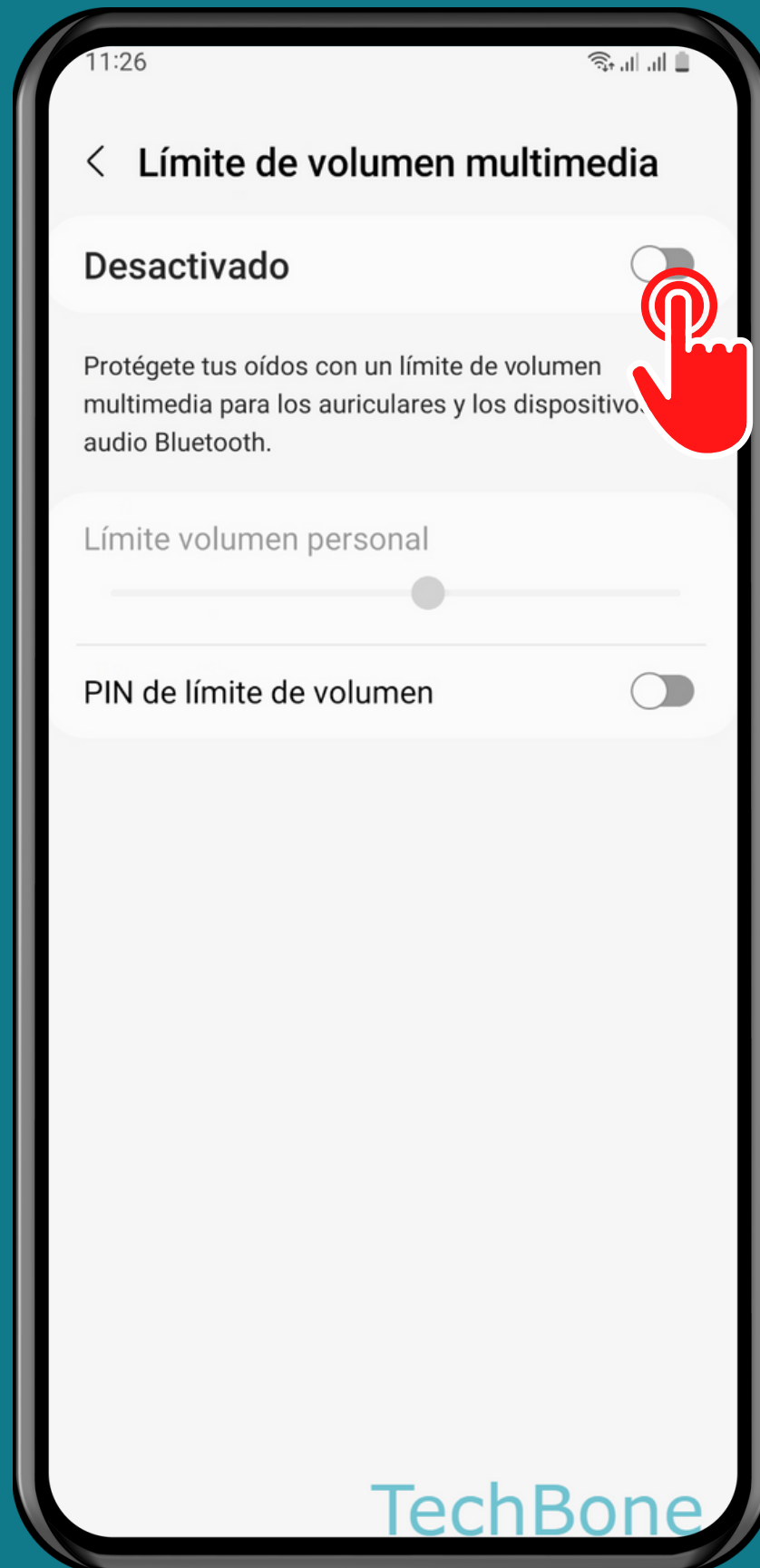


Abre el Menú

TechBone

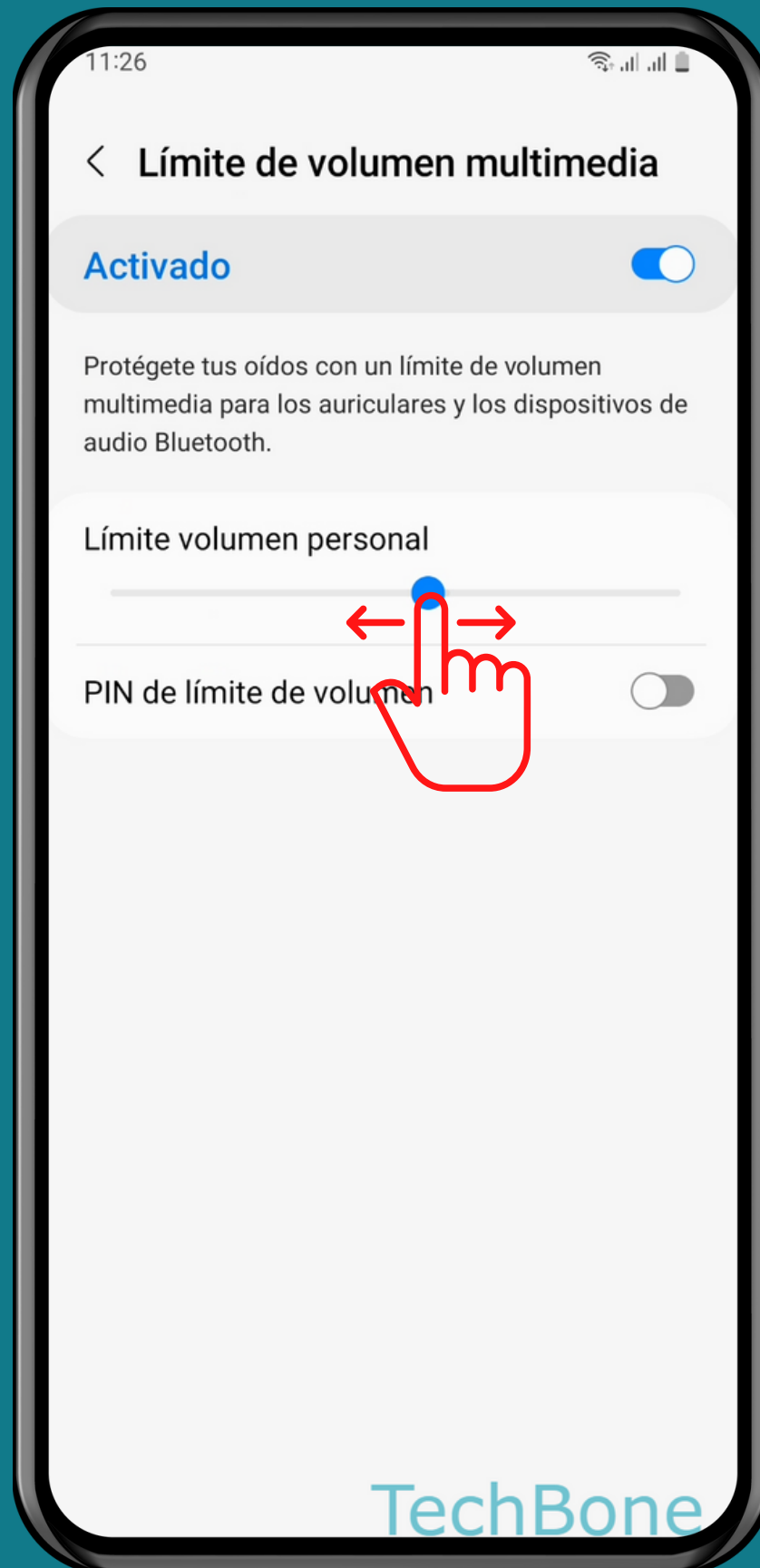


Presiona Límite de volumen multimedia



Activa o desactiva Límite de volumen multimedia

TechBone



Establece un Límite volumen personal

¡Listo!