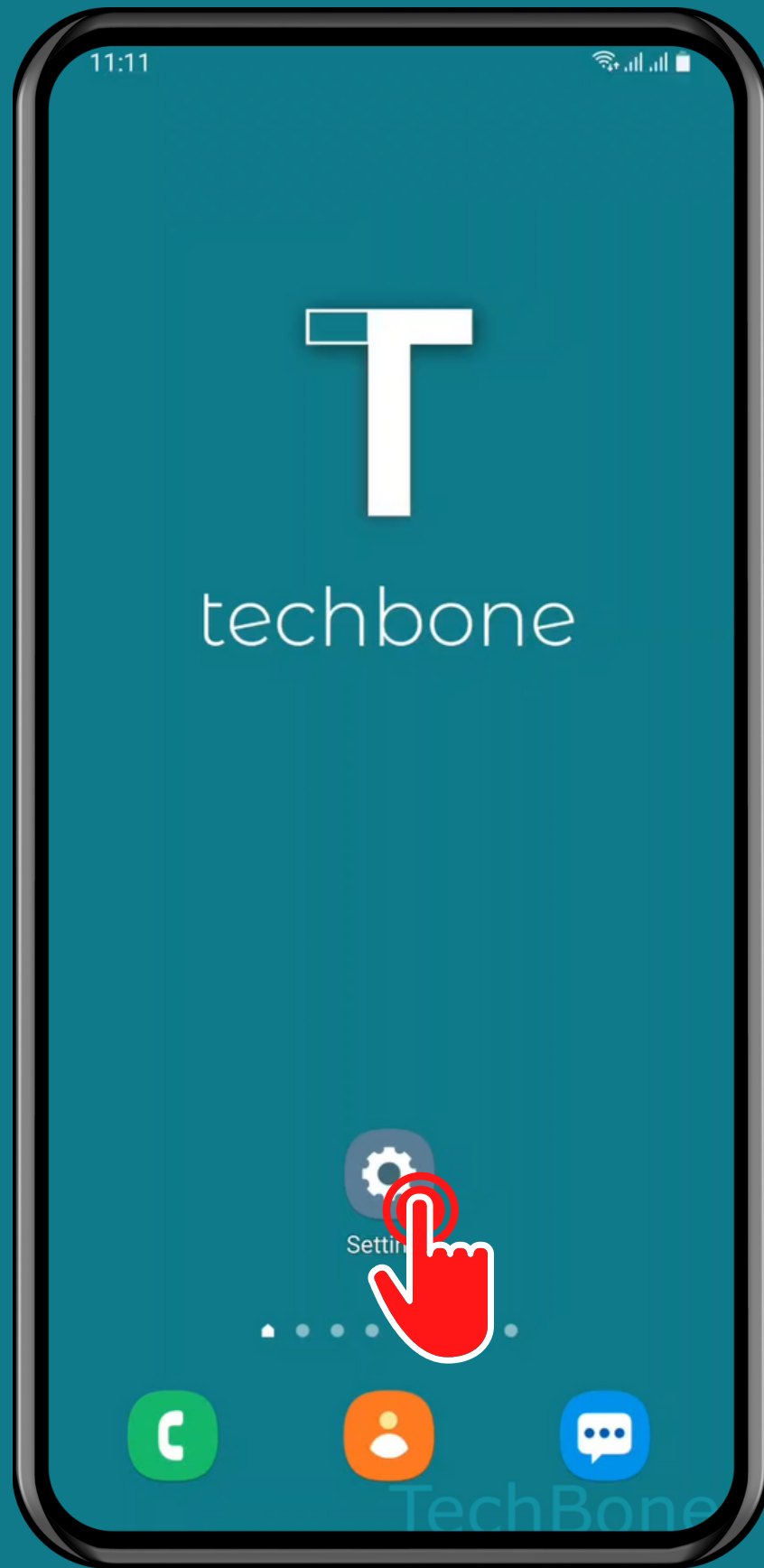


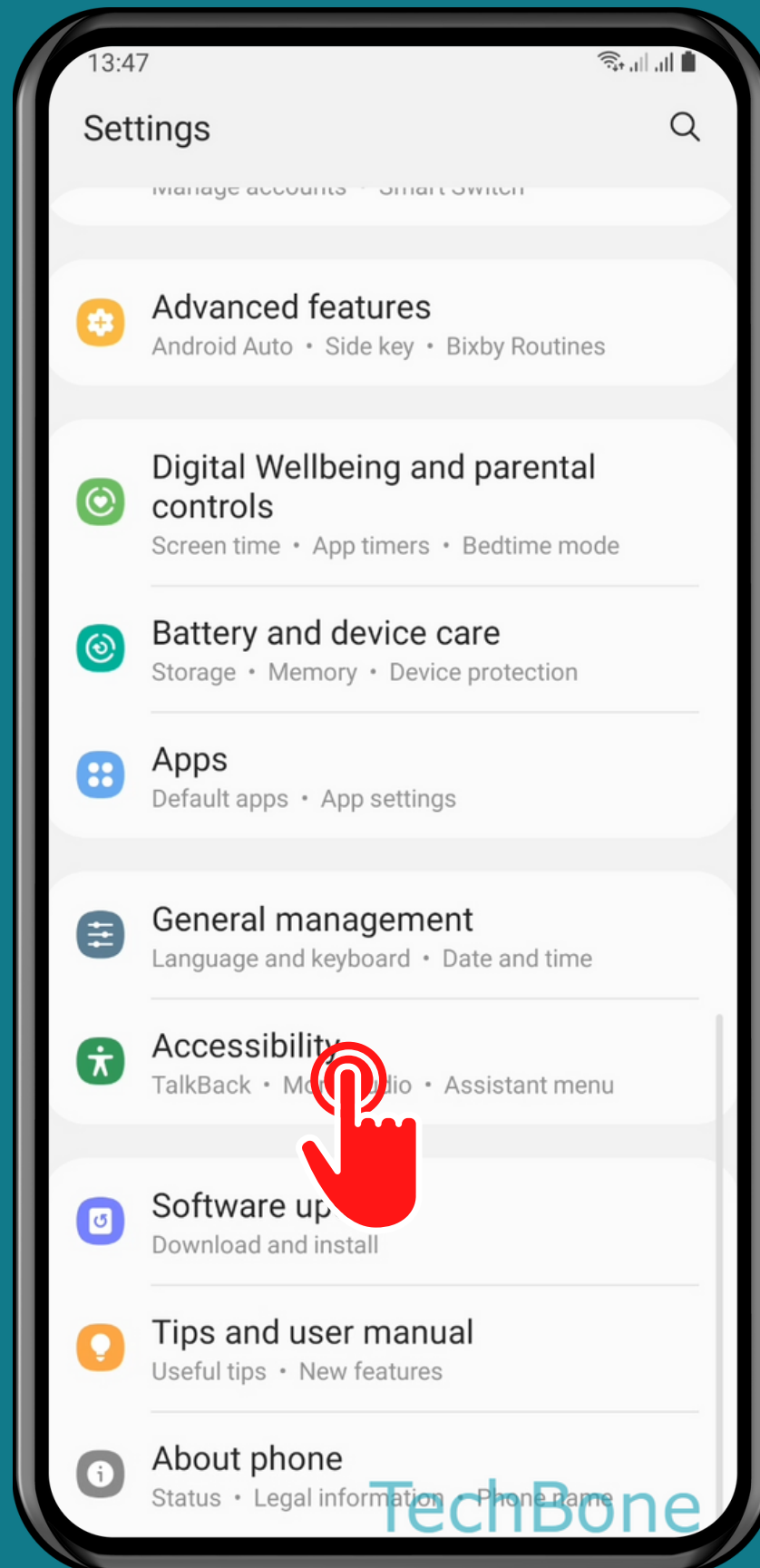
SAMSUNG

Android 11 - One UI 3

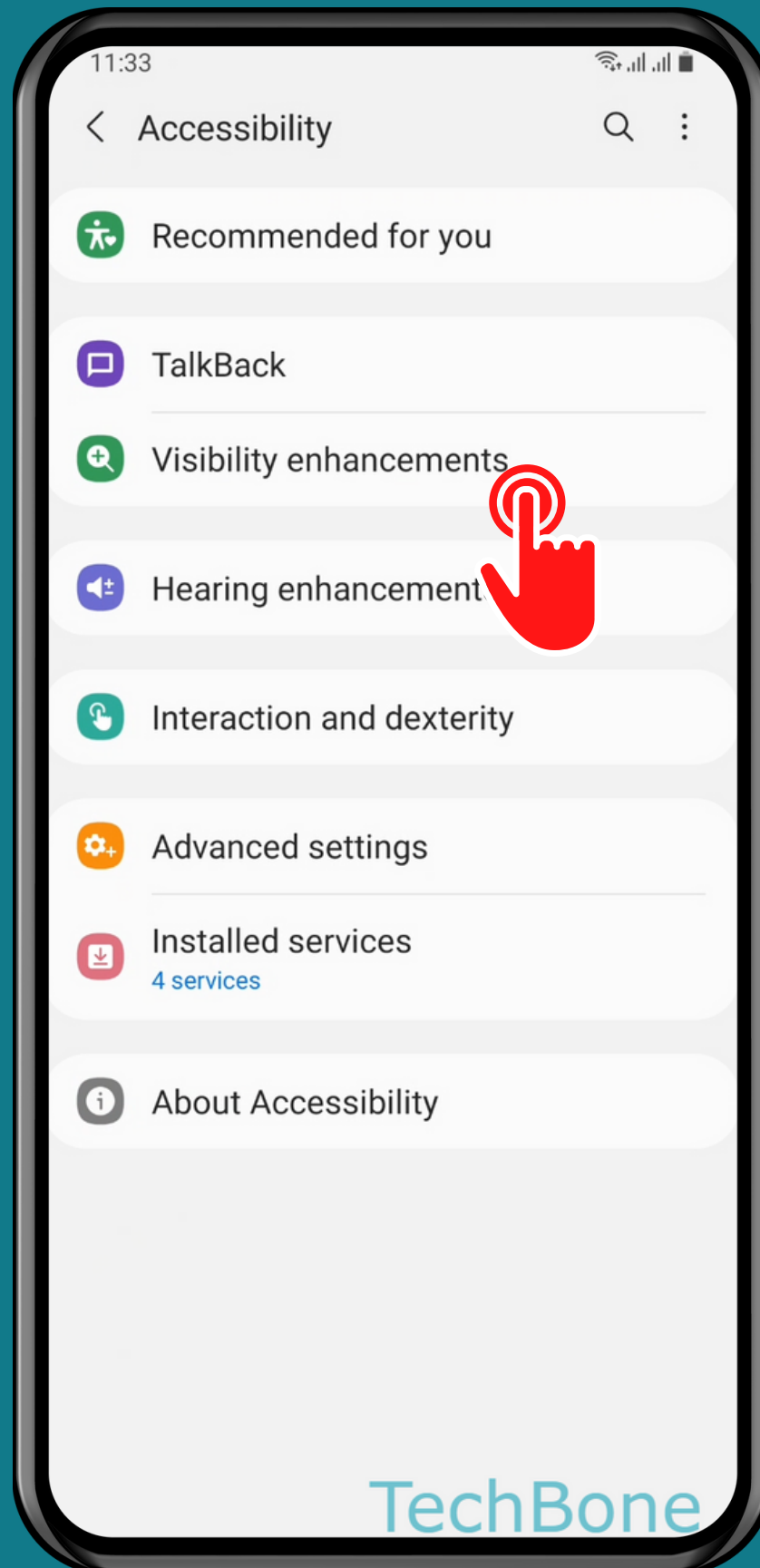
# HOW TO TURN ON/OFF MAGNIFIER WINDOW SHORTCUT



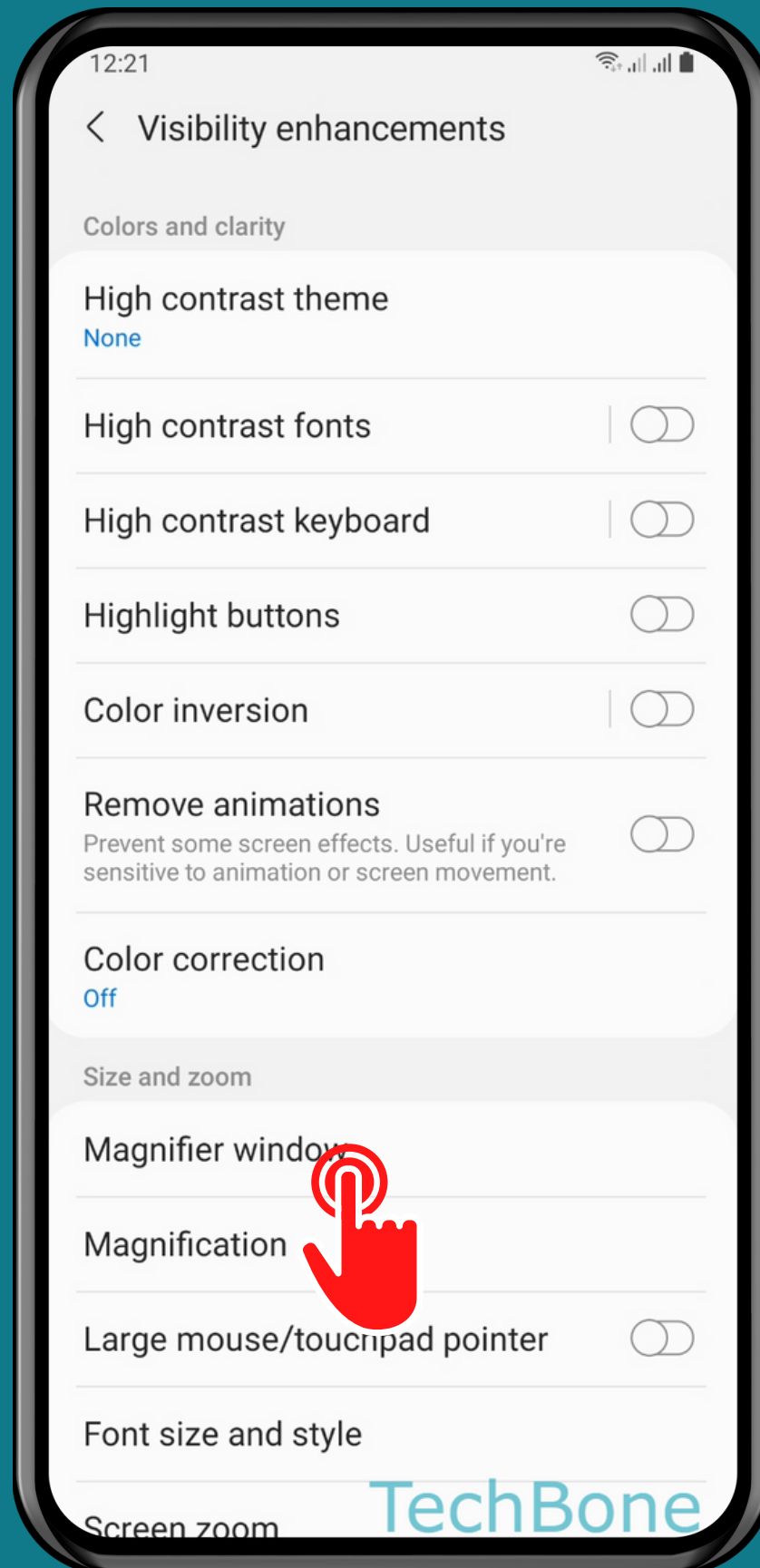
# Tap on Settings



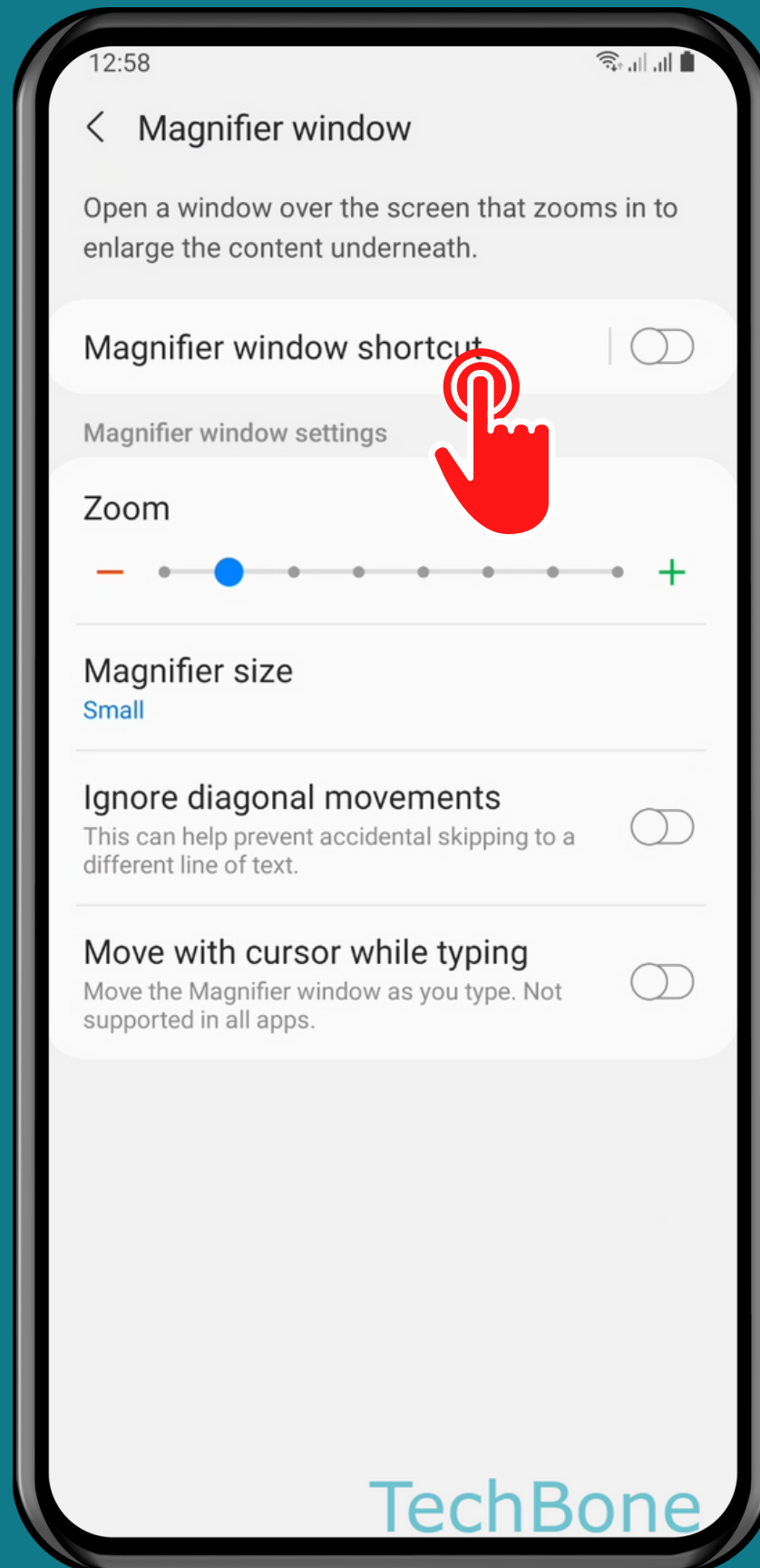
# Tap on Accessibility



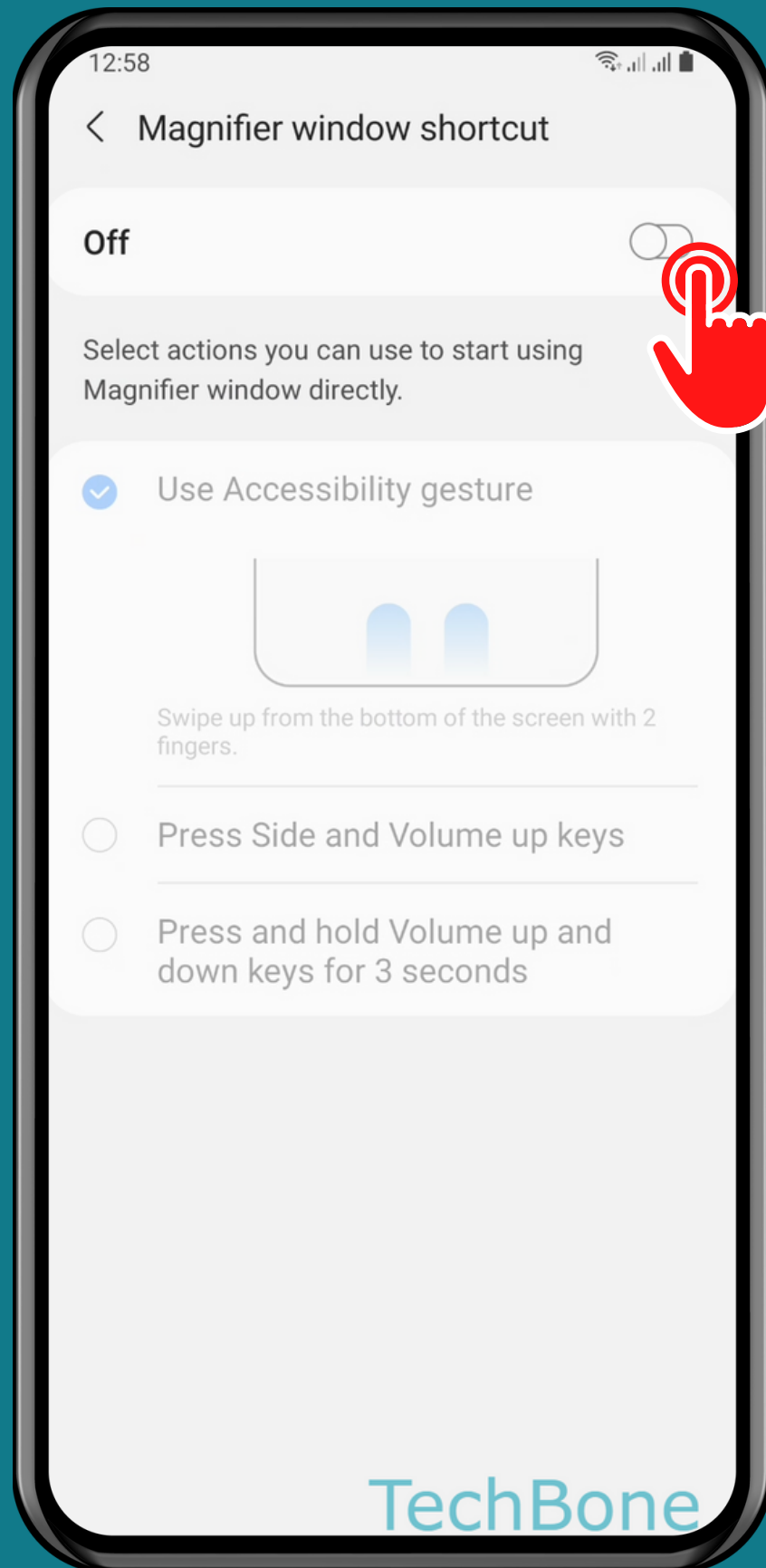
# Tap on Visibility enhancements



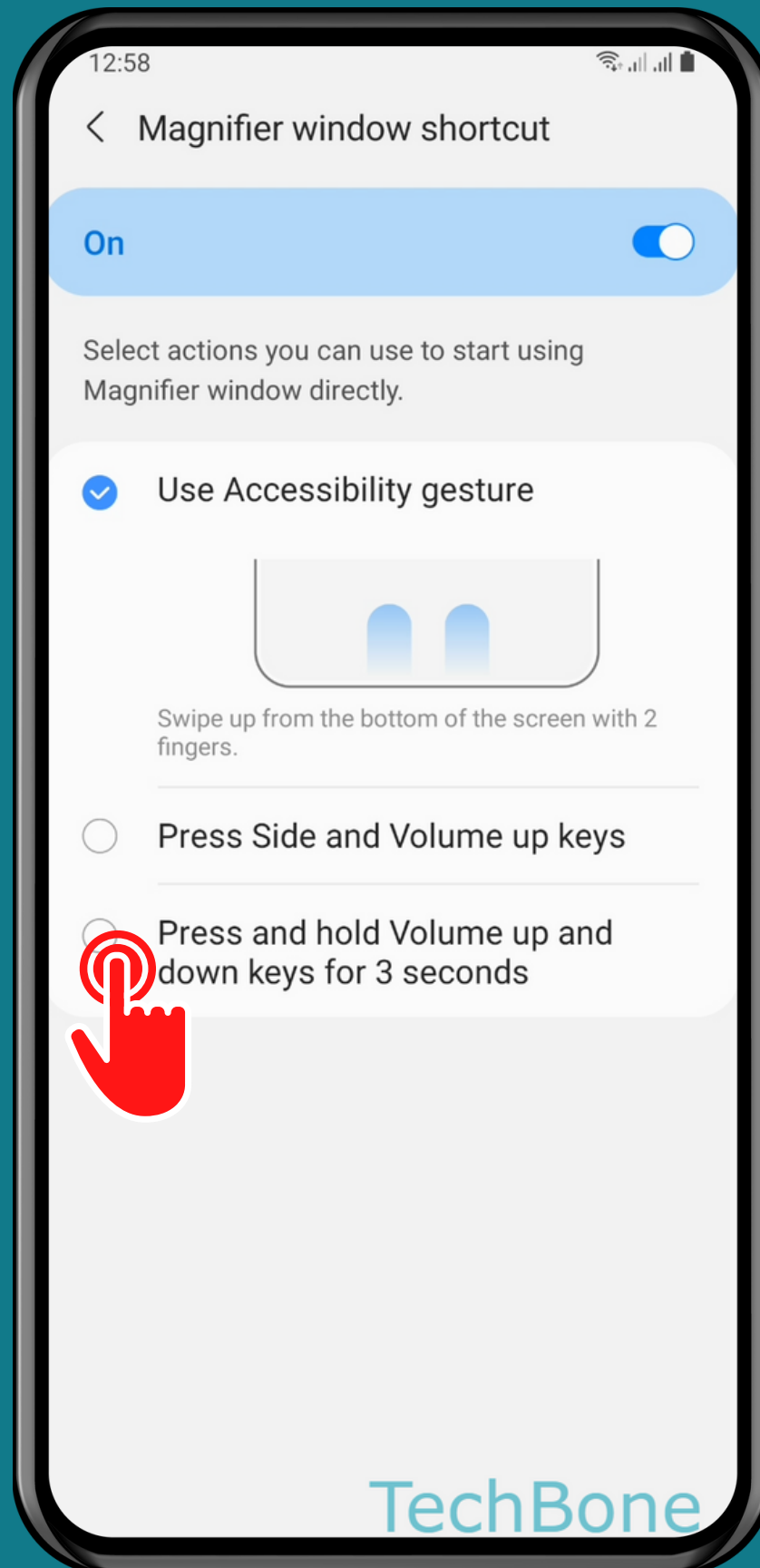
# Tap on Magnifier window



# Tap on Magnifier window shortcut



# Turn On/Off Magnifier window shortcut



# Choose an Option



Done!