

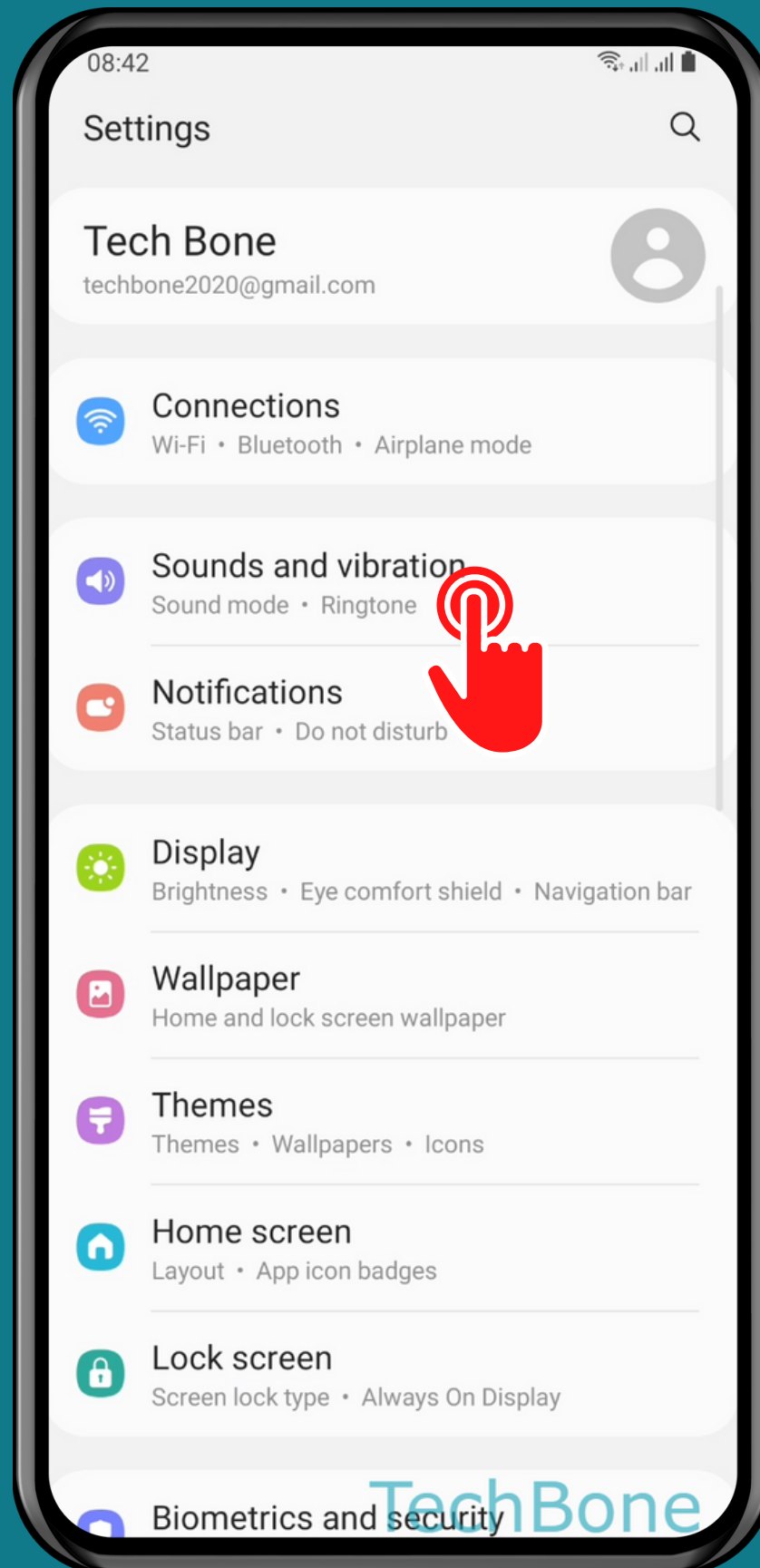
SAMSUNG

Android 11 - One UI 3

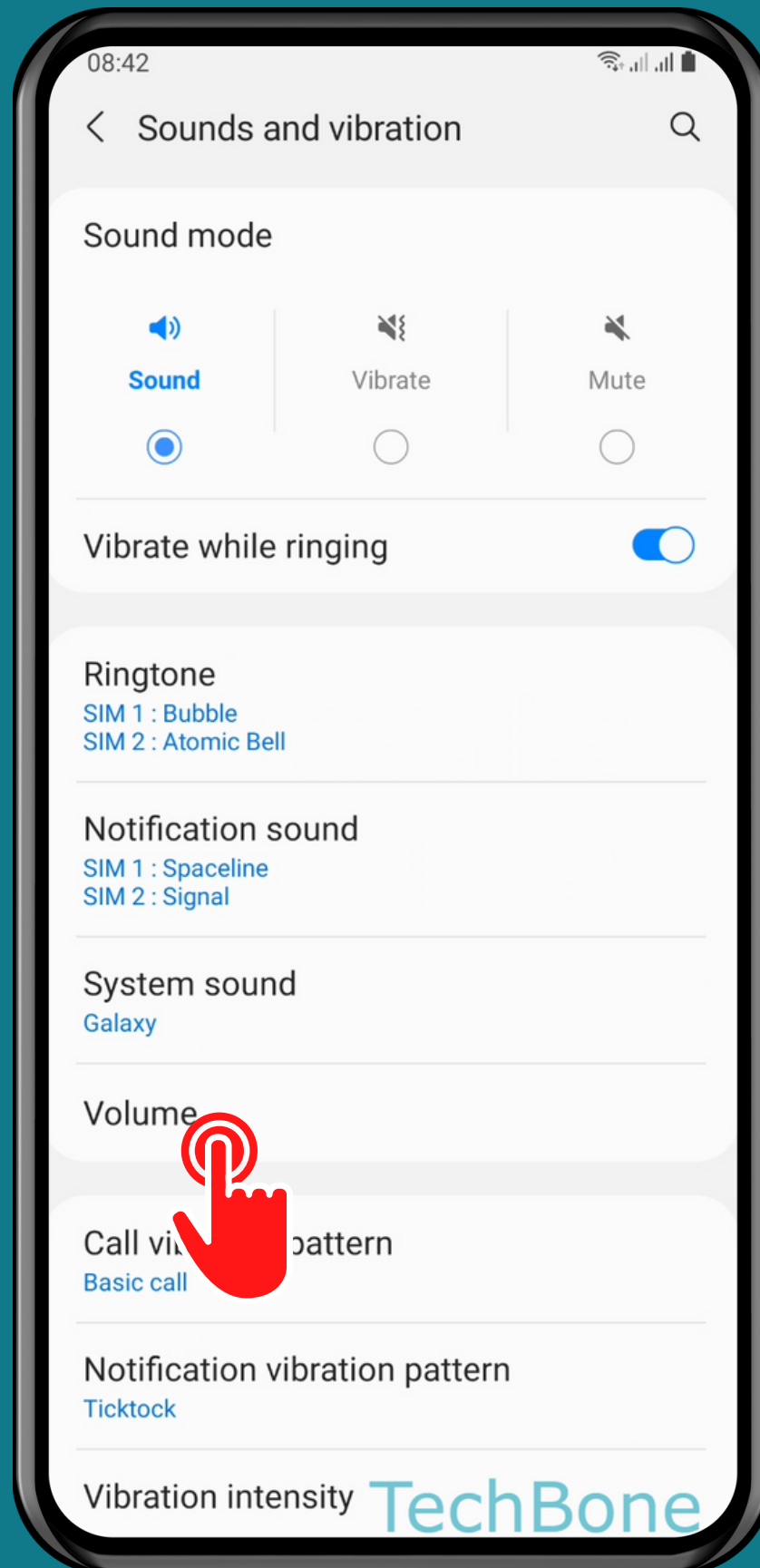
HOW TO TURN ON/OFF MEDIA VOLUME LIMIT



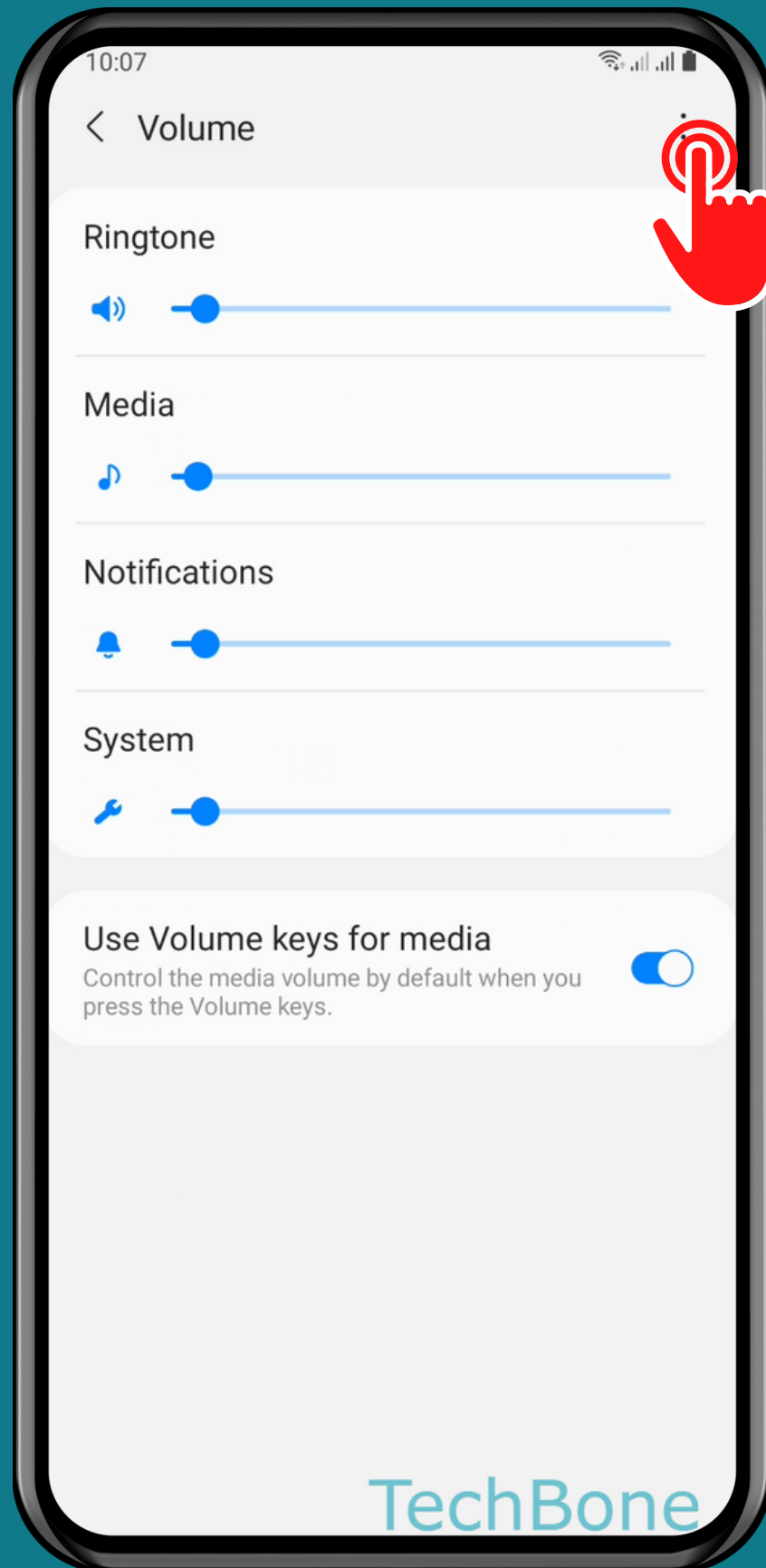
Tap on Settings



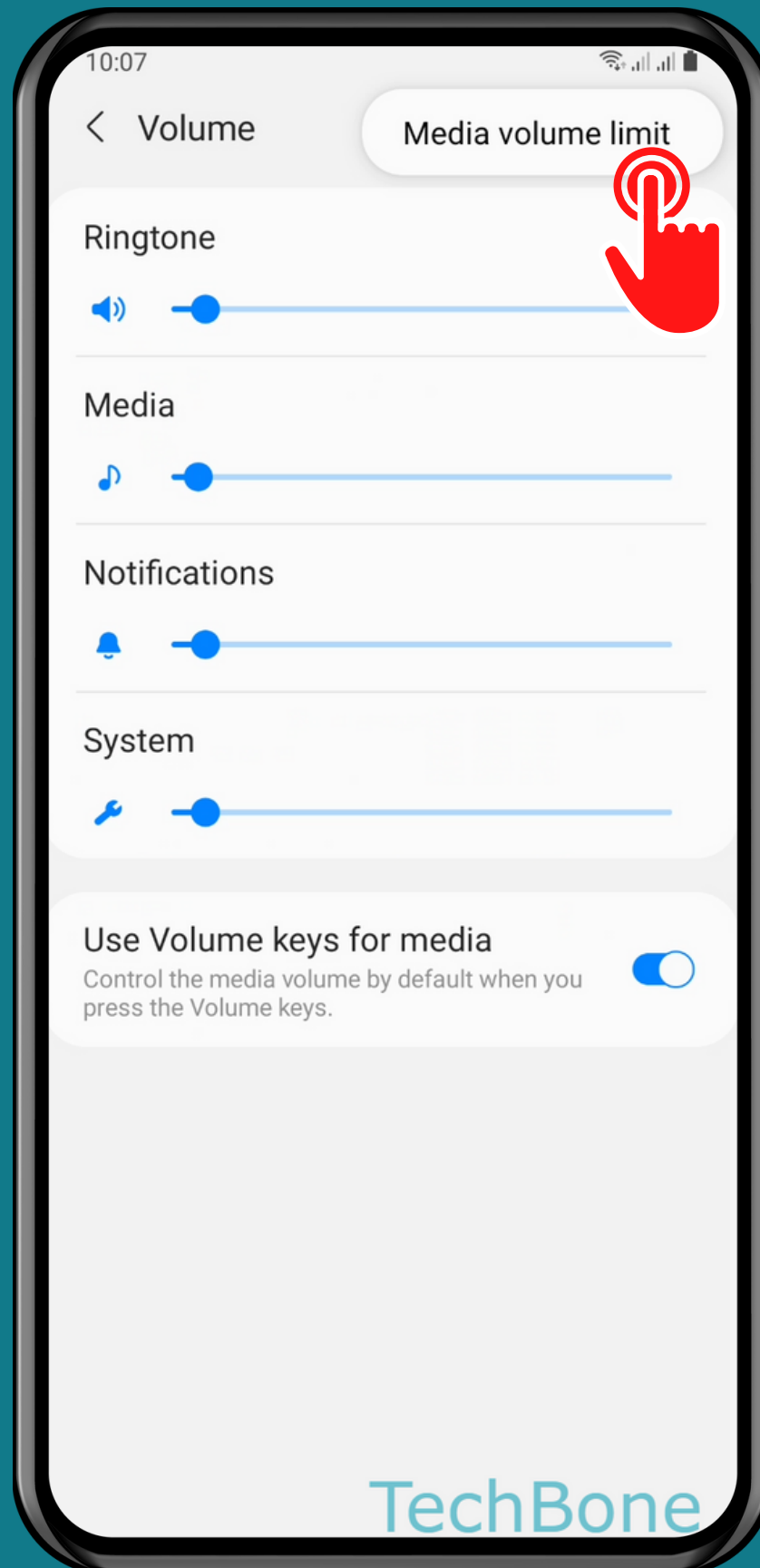
Tap on Sounds and vibration



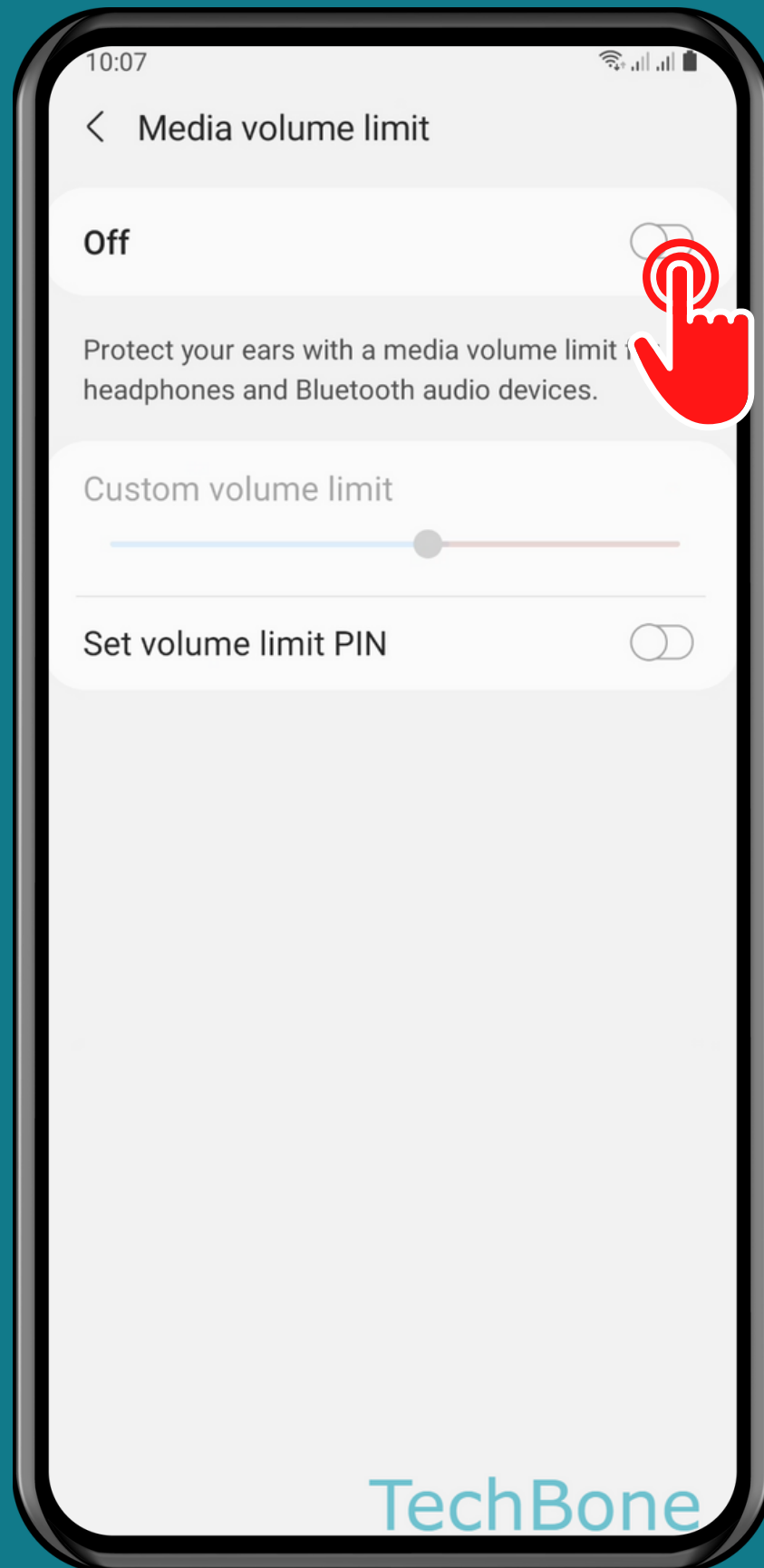
Tap on Volume



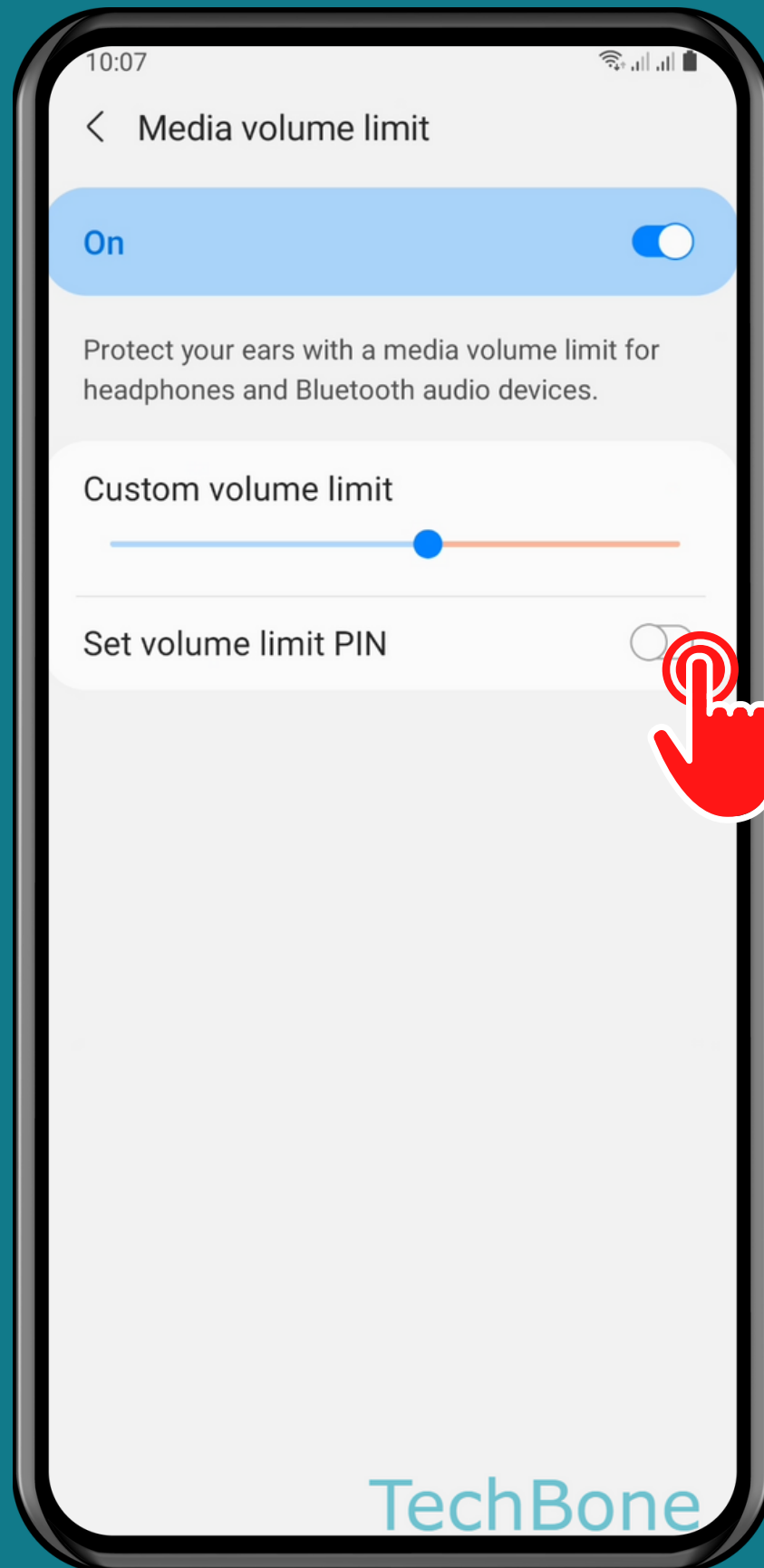
Open the Menu



Tap on Media volume limit



Turn On/Off Media volume limit



Set a Custom volume limit and/or Volume limit PIN

Done!