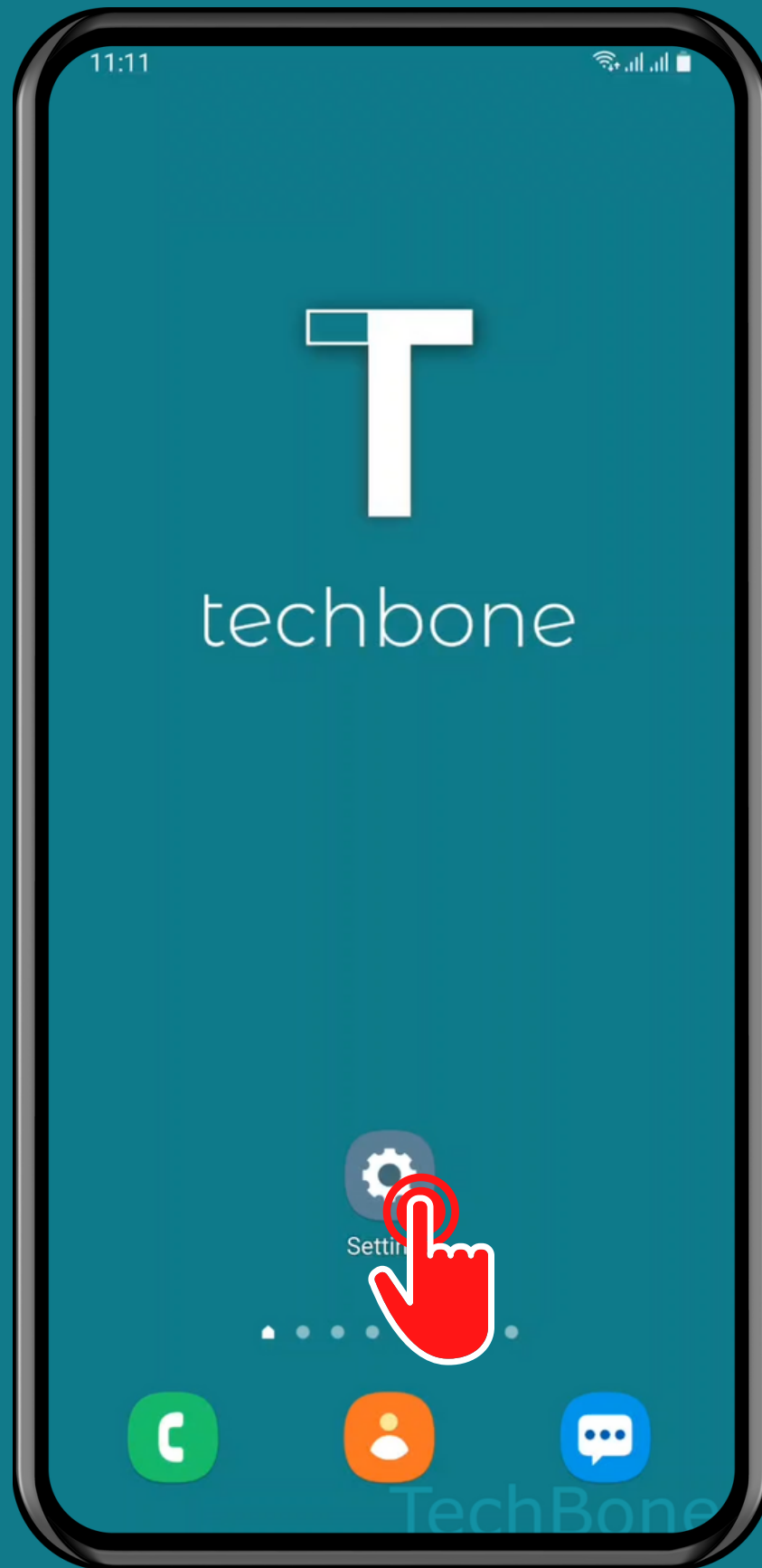


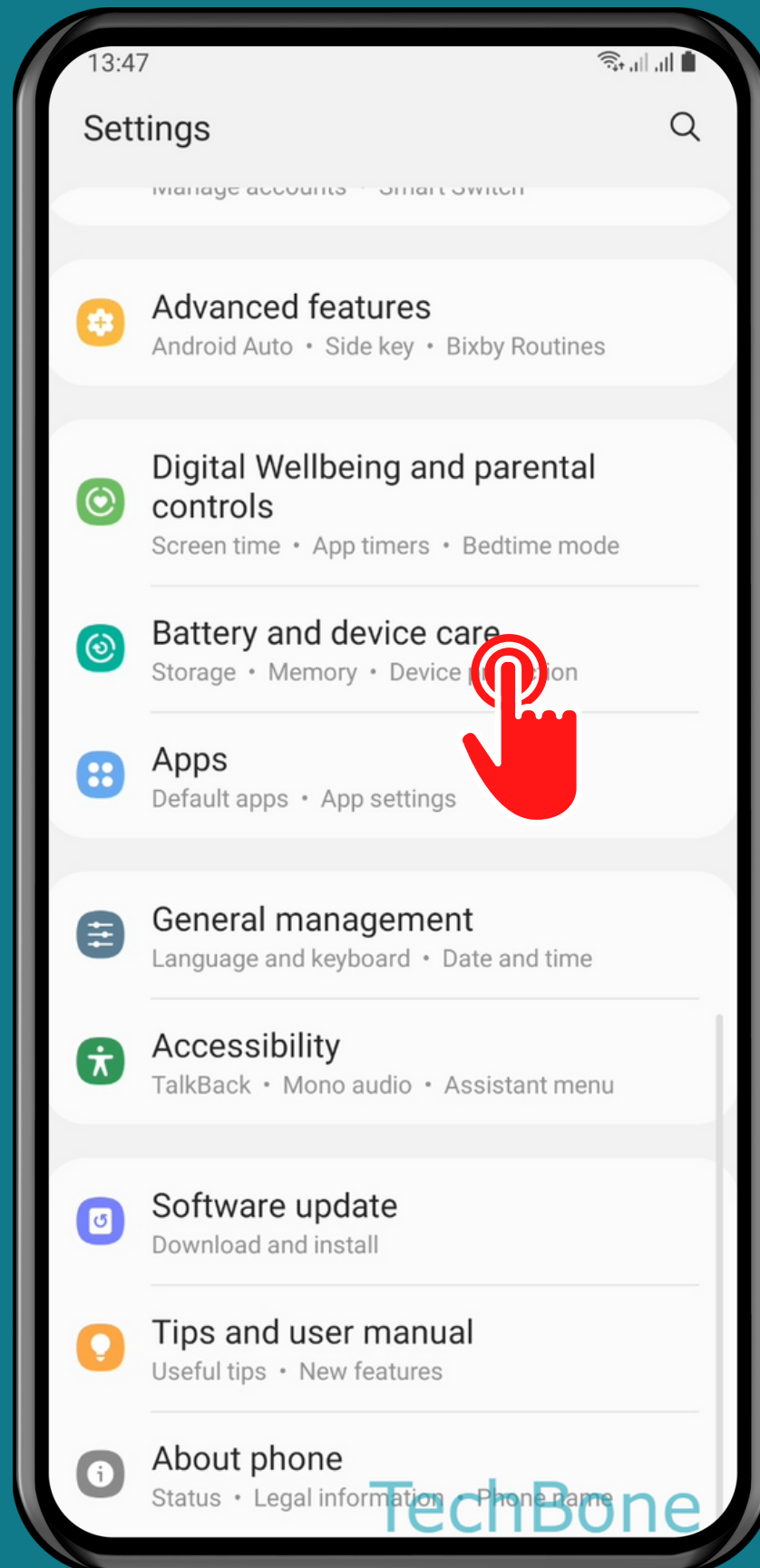
SAMSUNG

Android 11 - One UI 3

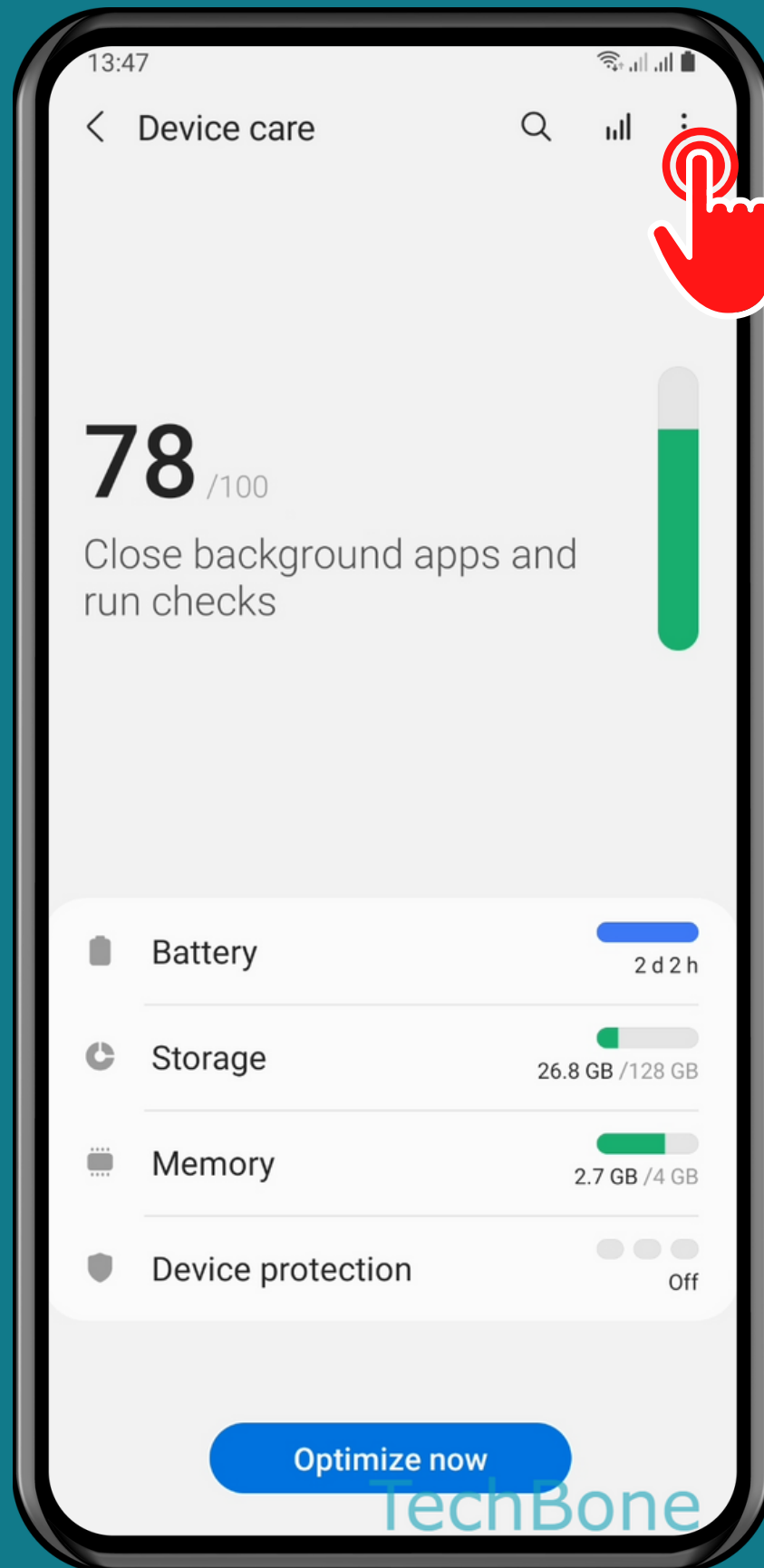
HOW TO SCHEDULE AUTO RESTART



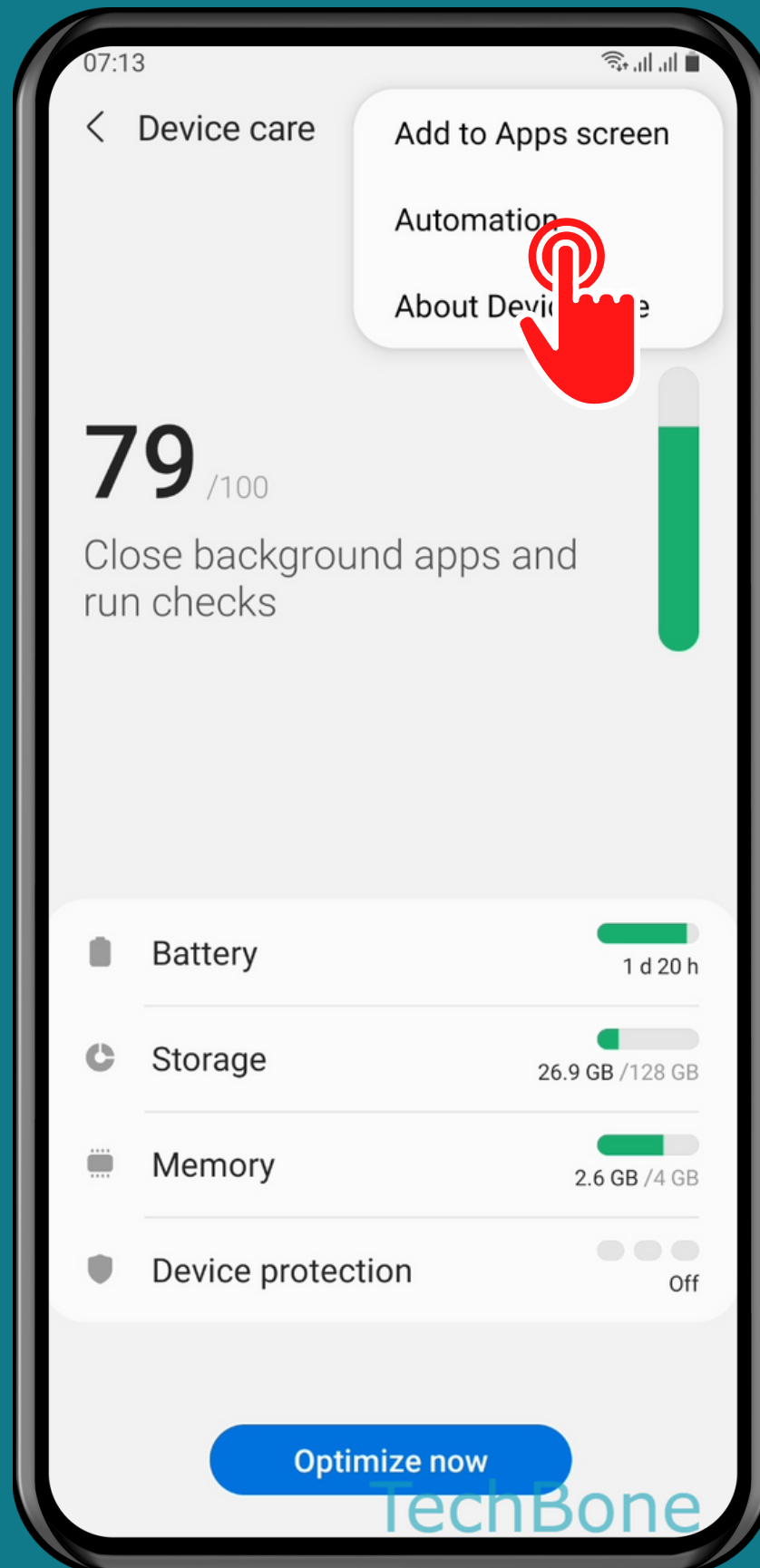
Tap on
Settings



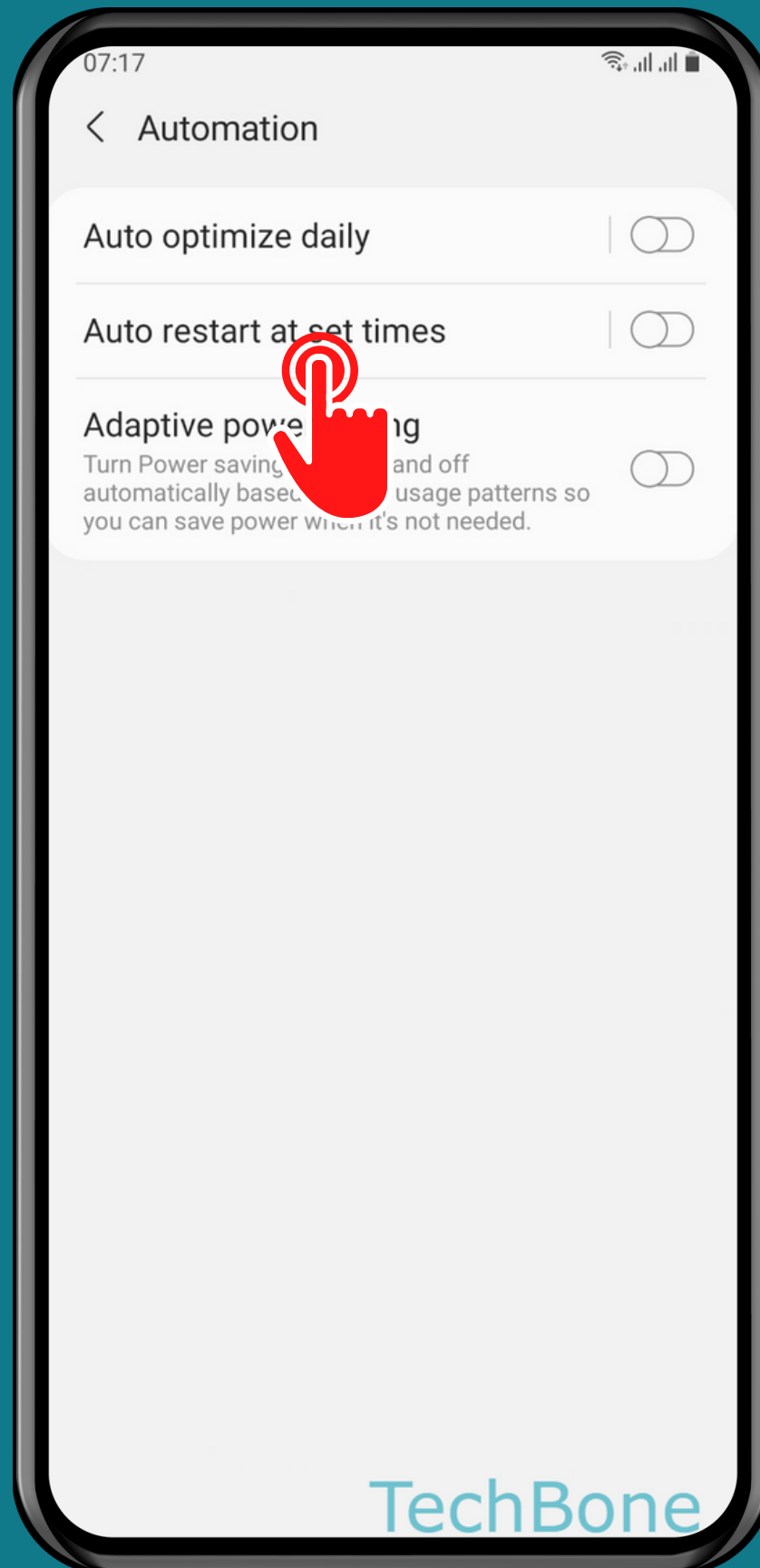
Tap on
Battery and
device care



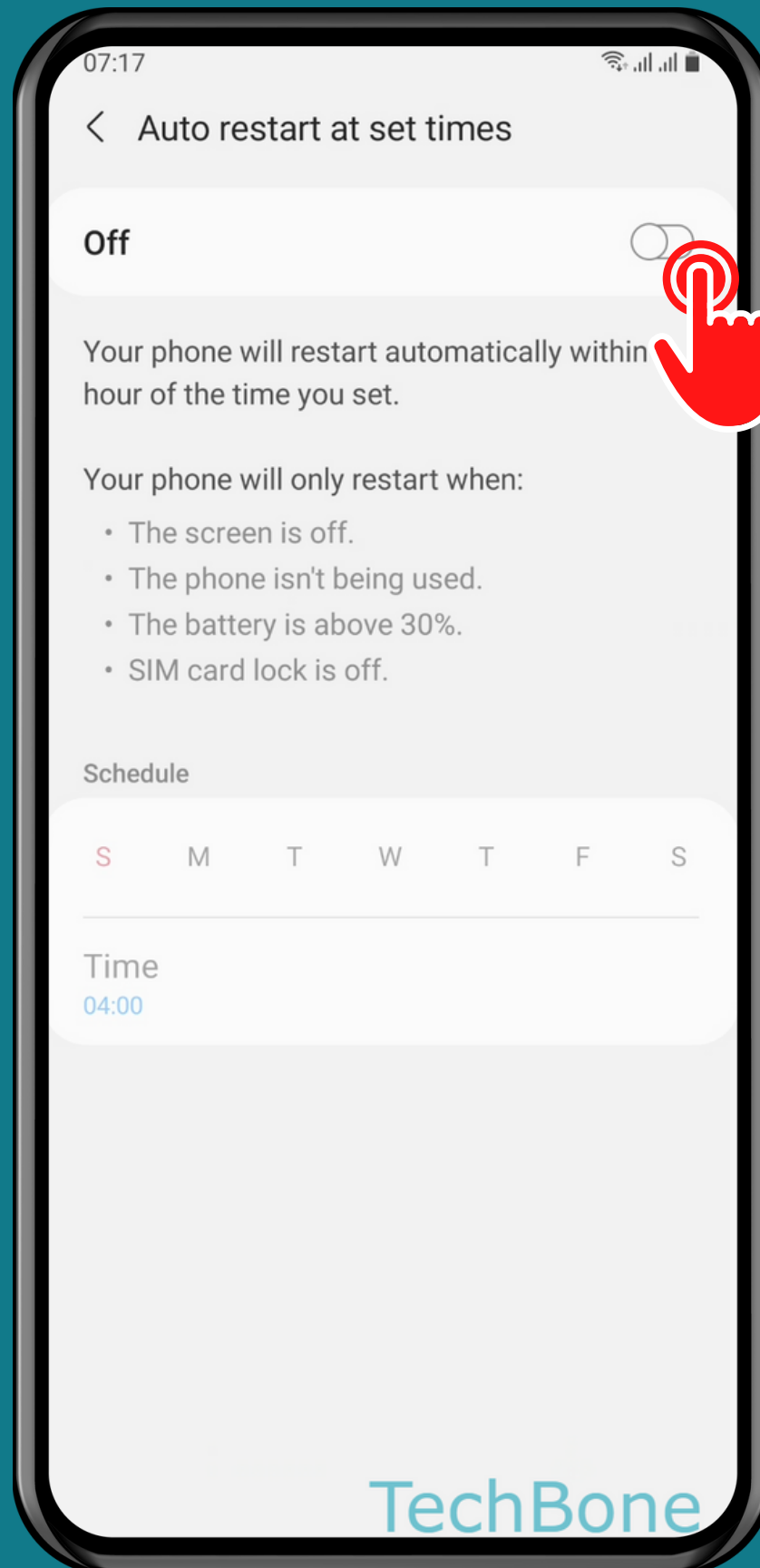
Open the Menu



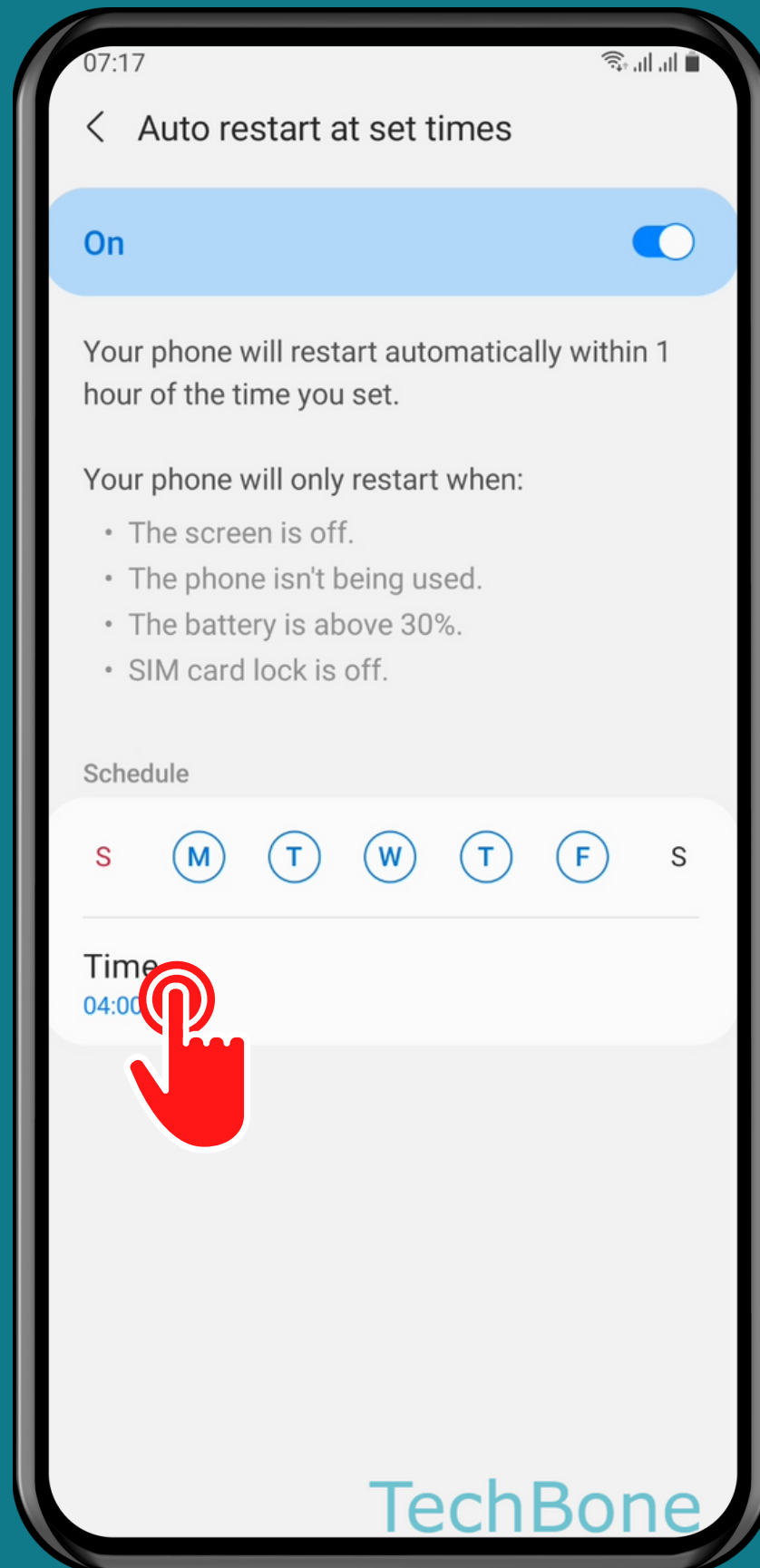
Tap on Automation



Tap on
Auto restart at set
times



Turn On/Off Auto restart at set times



Set the **Days** and
Time for auto restart

Done!