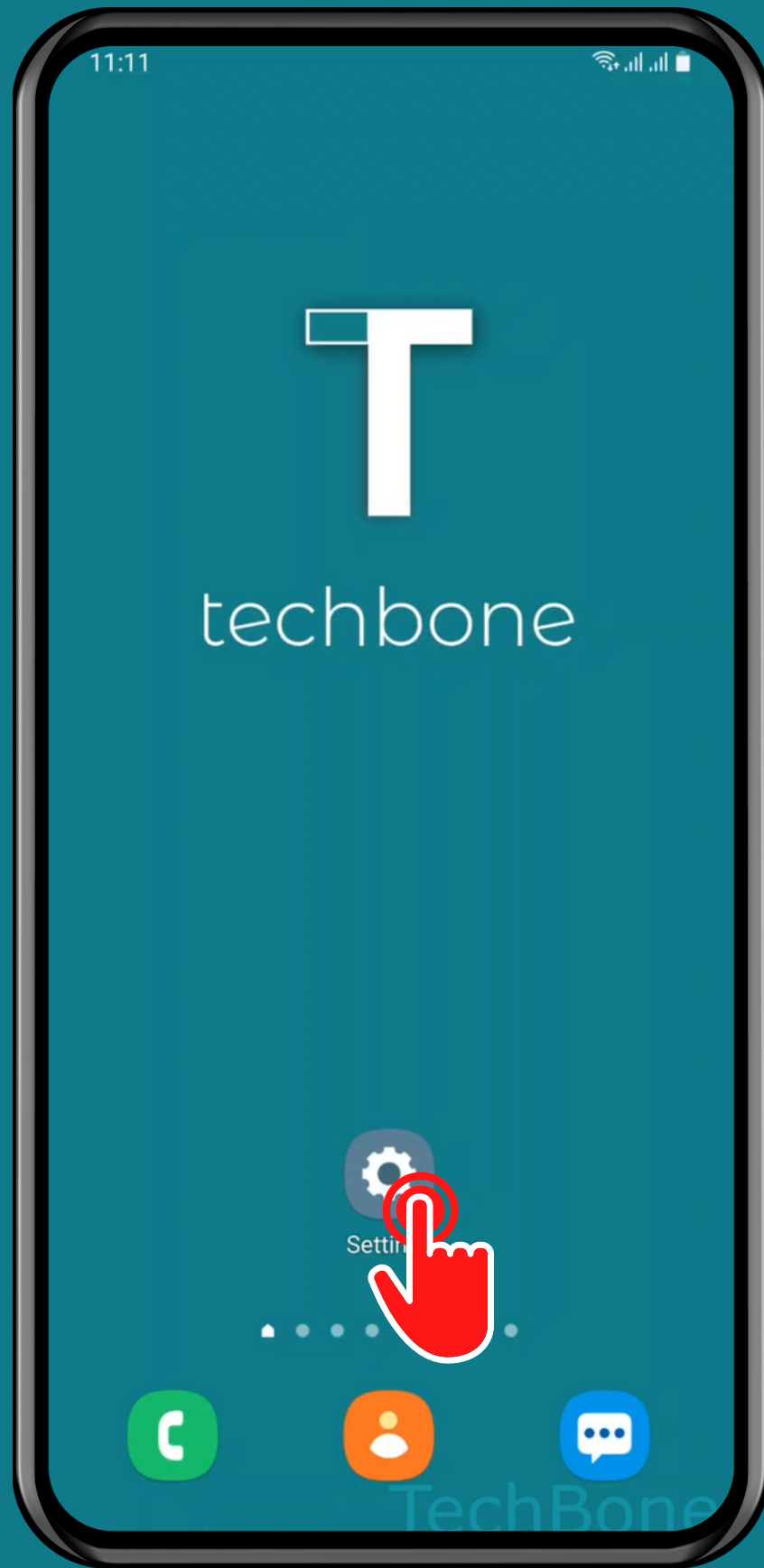


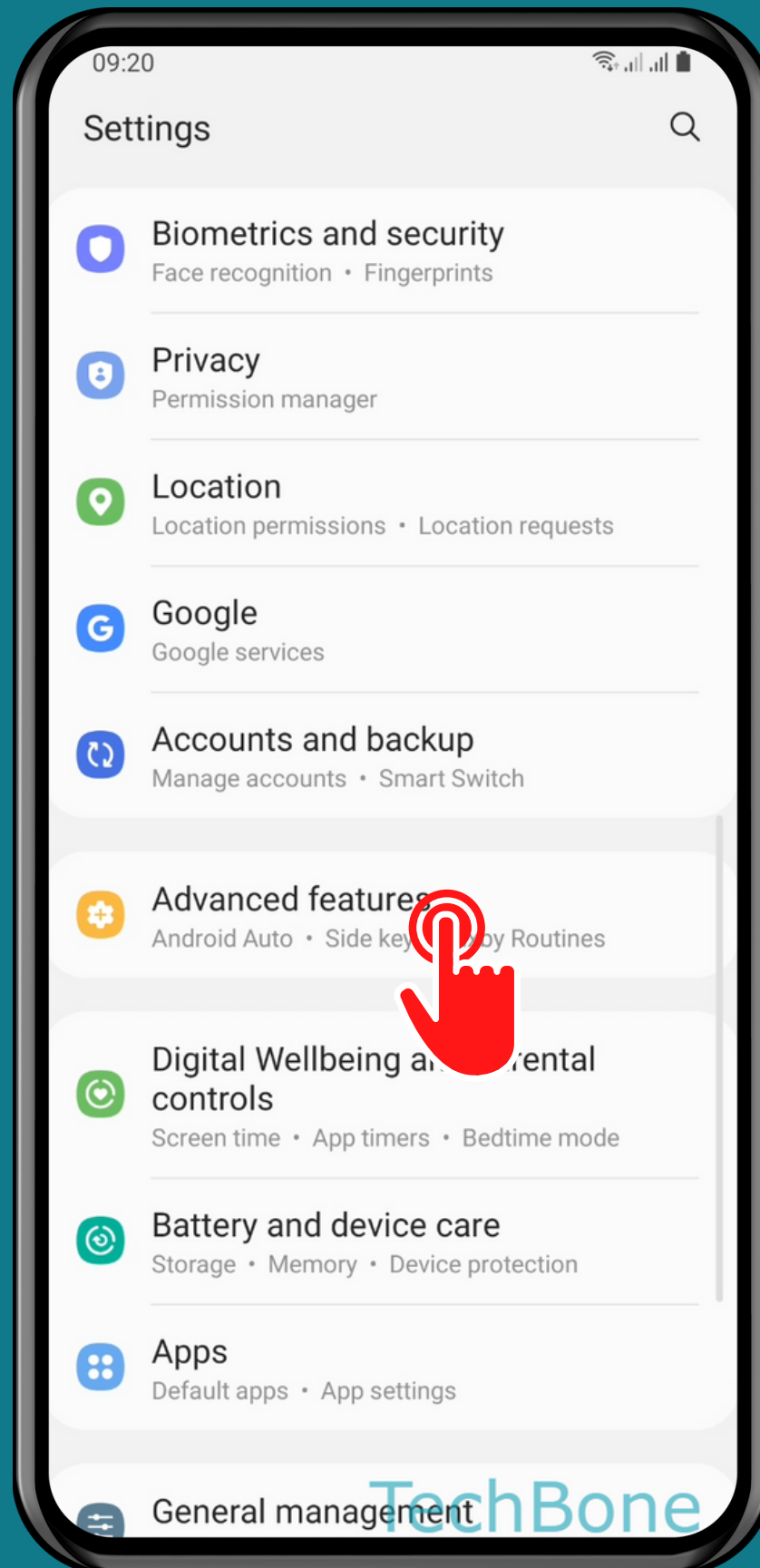
SAMSUNG

Android 11 - One UI 3

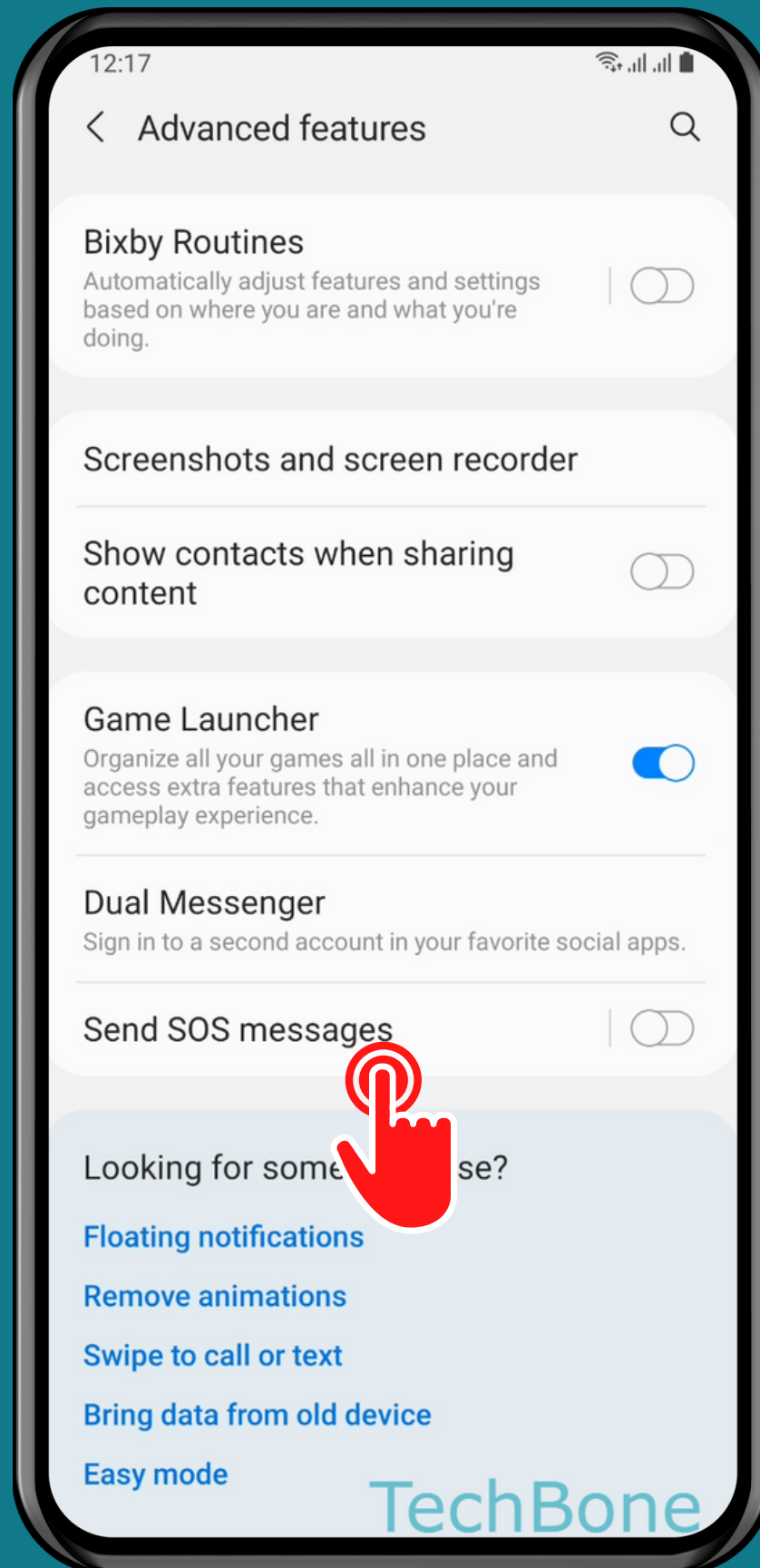
HOW TO TURN ON/OFF "SEND SOS MESSAGES"



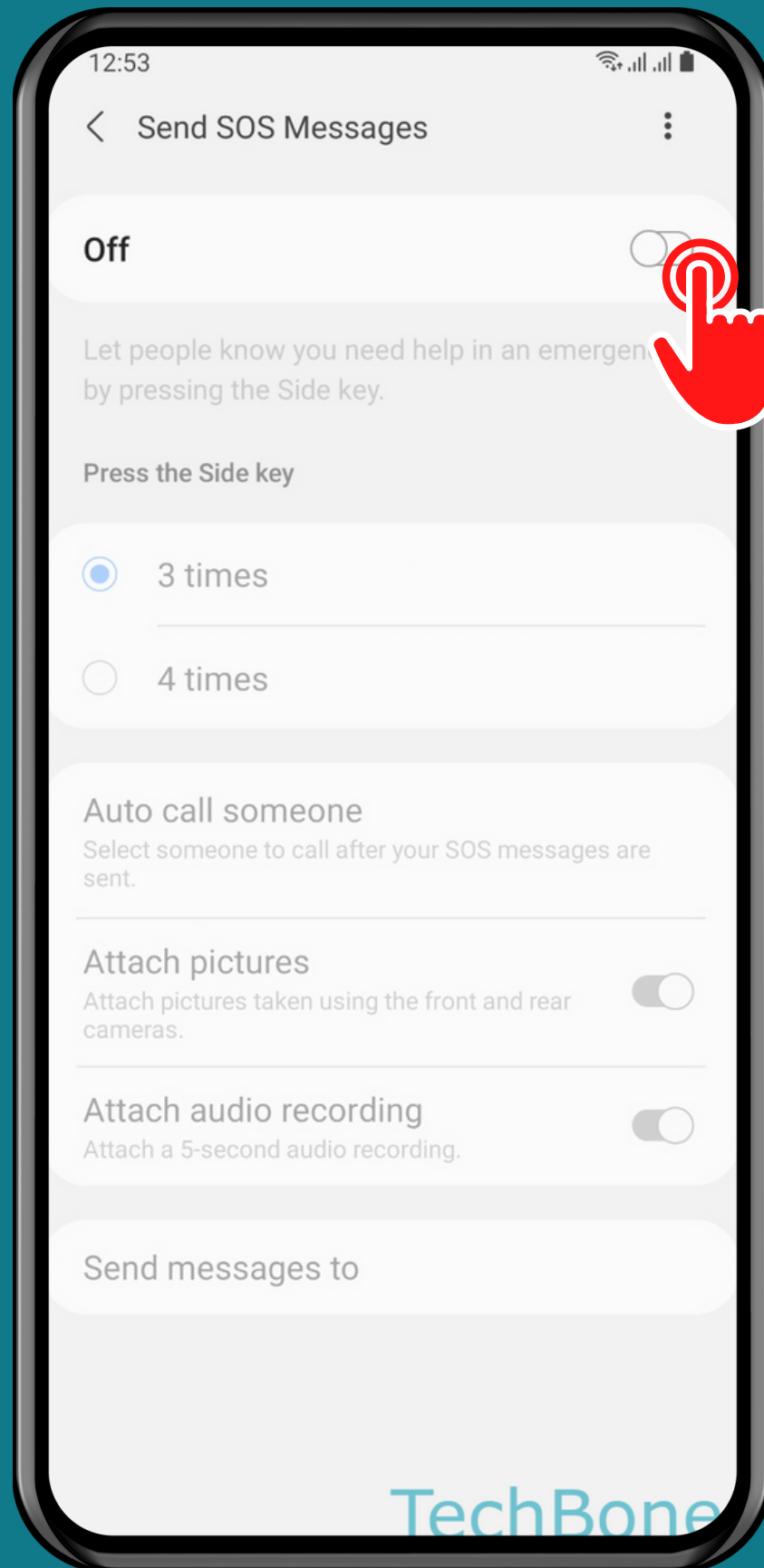
Tap on
Settings



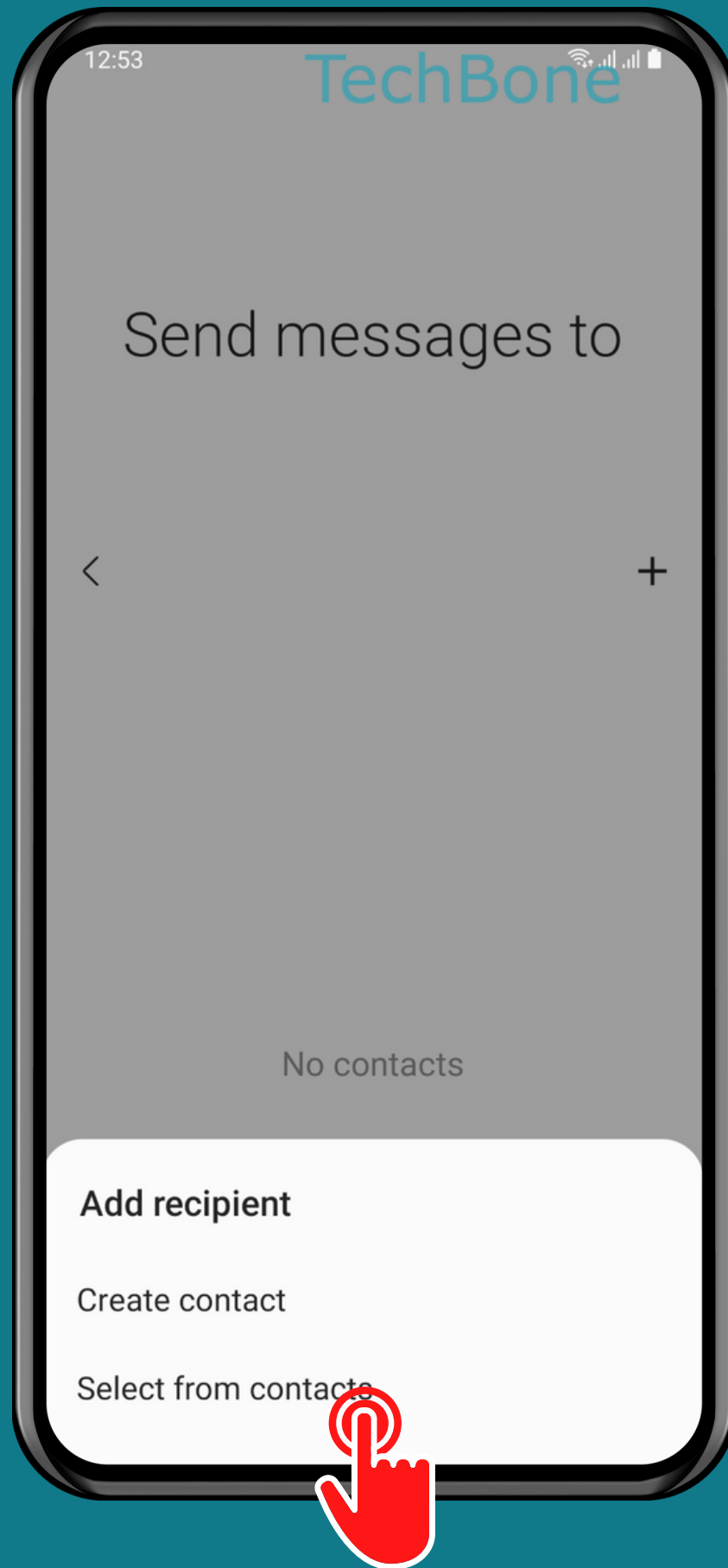
Tap on Advanced features



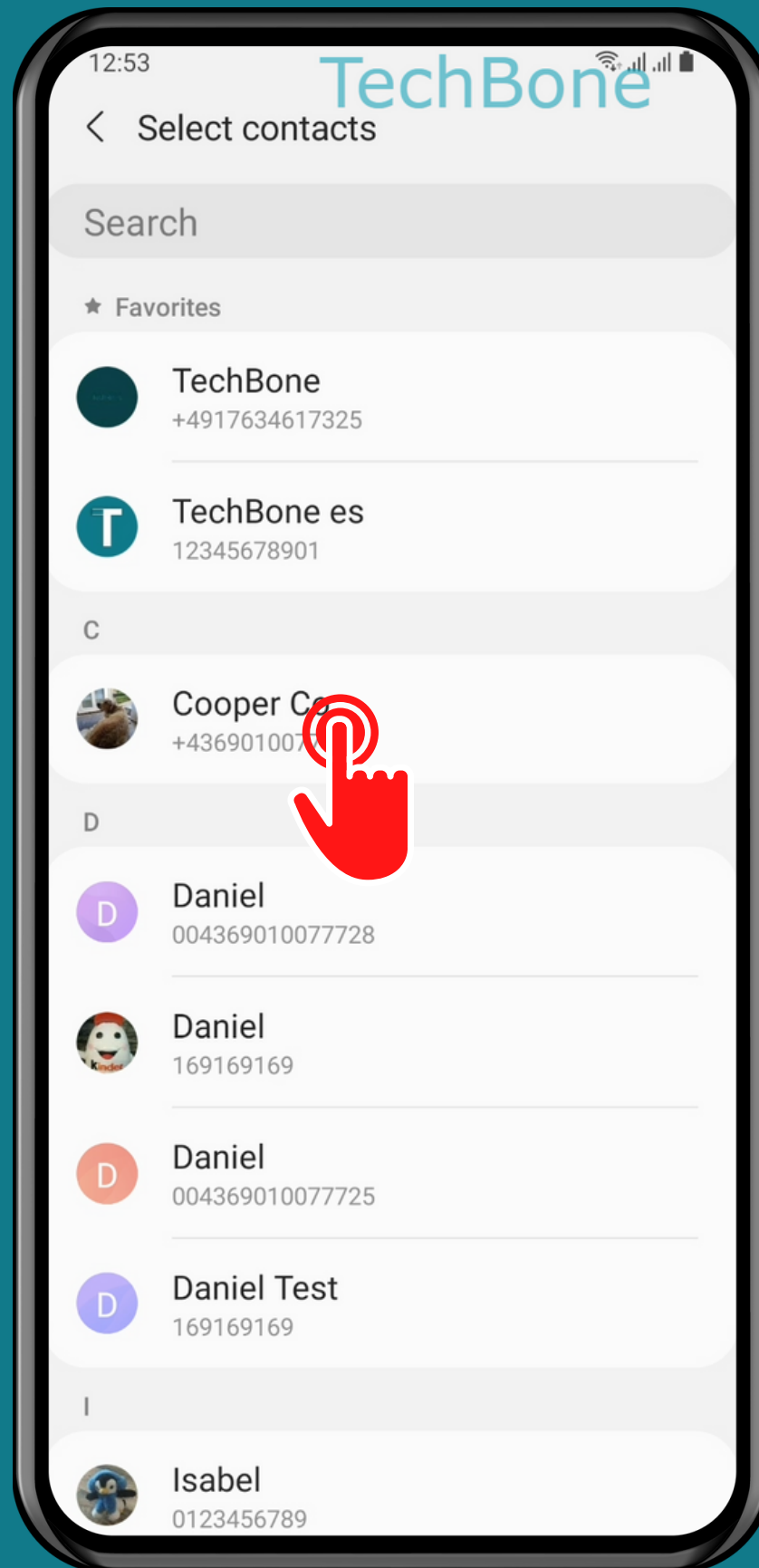
Tap on Send SOS messages



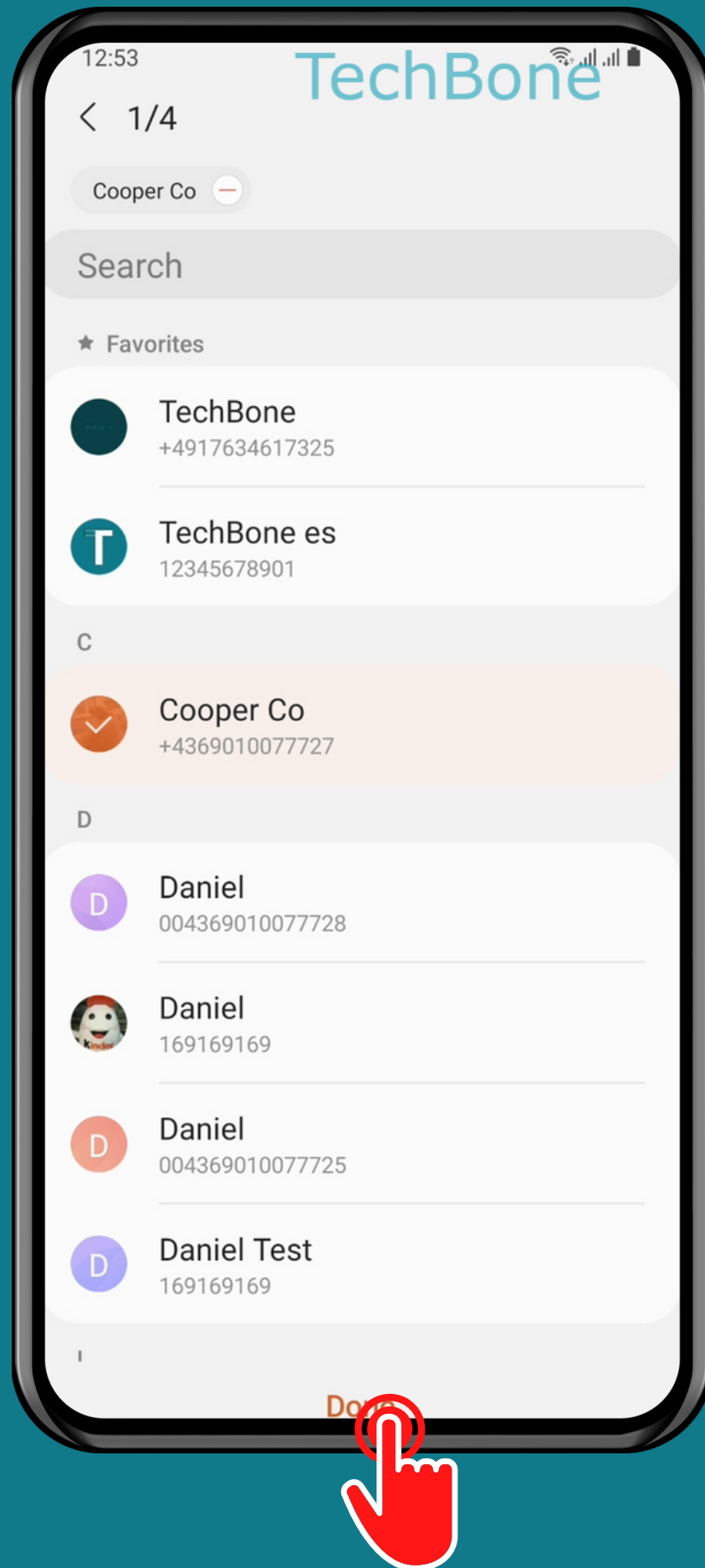
Turn On/Off an Send SOS messages



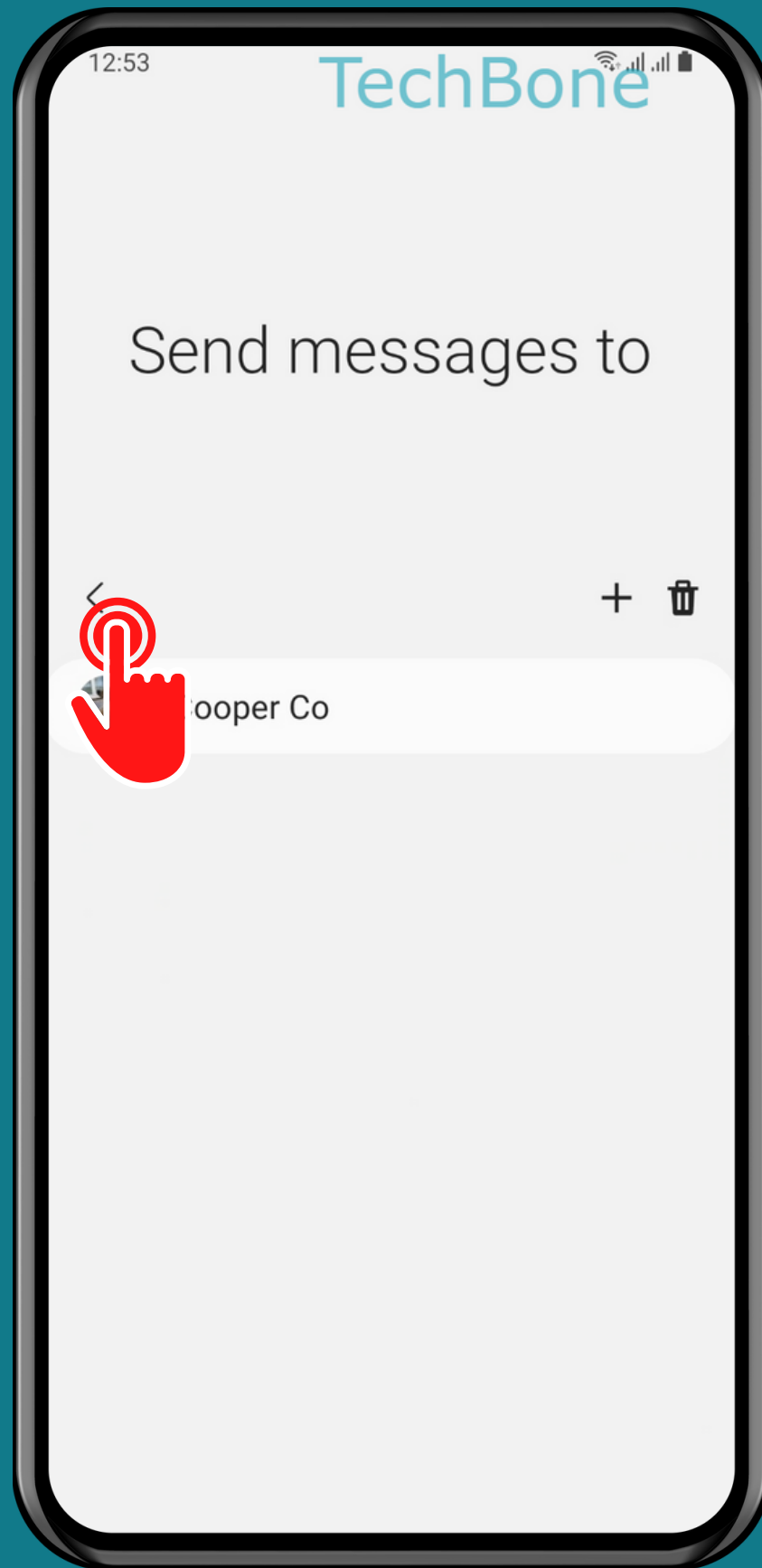
Choose
Create contact or
Select from contacts



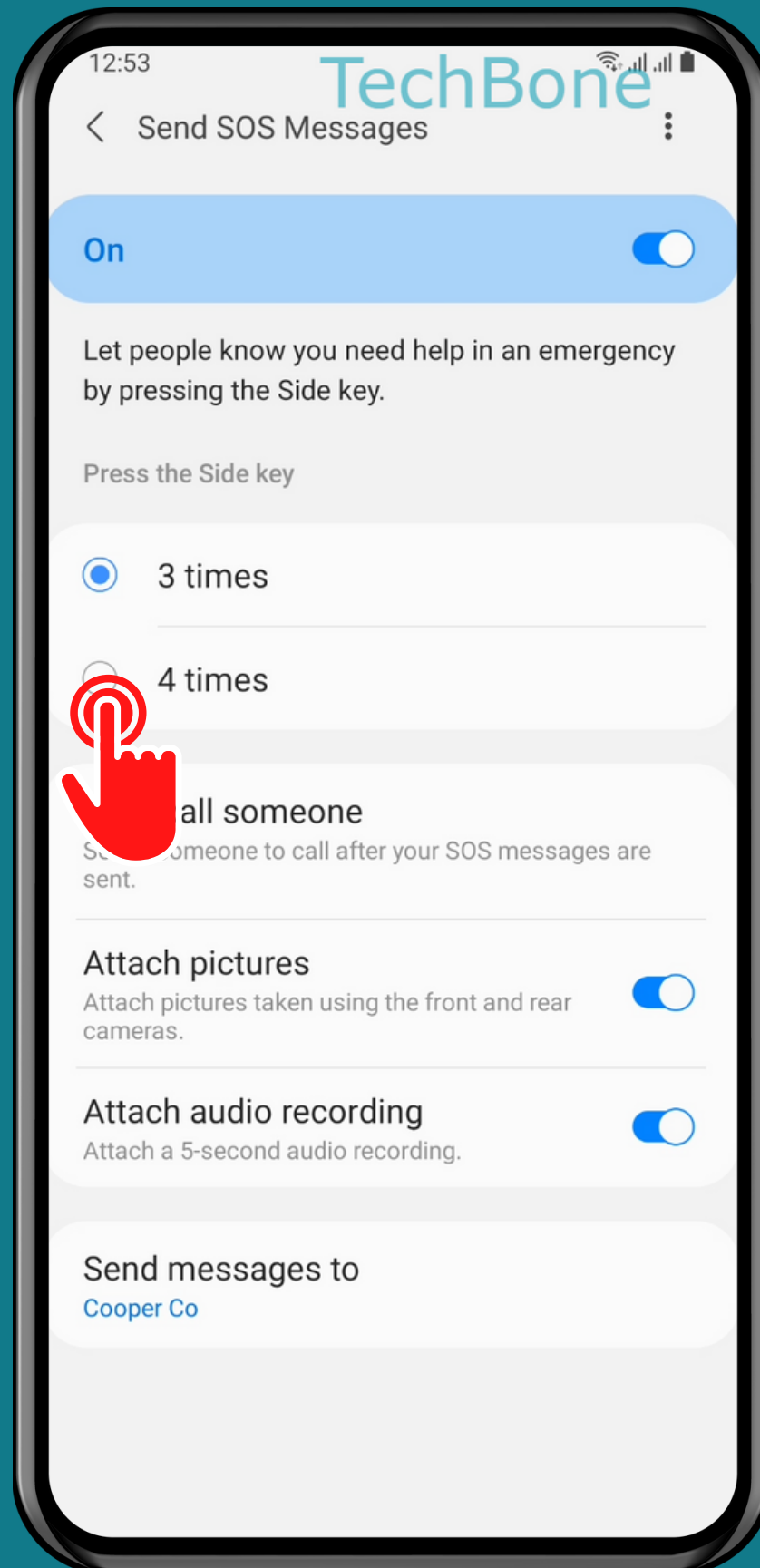
Select a Contact



Tap on
Done



Tap on
Back



Set other Options

Done!