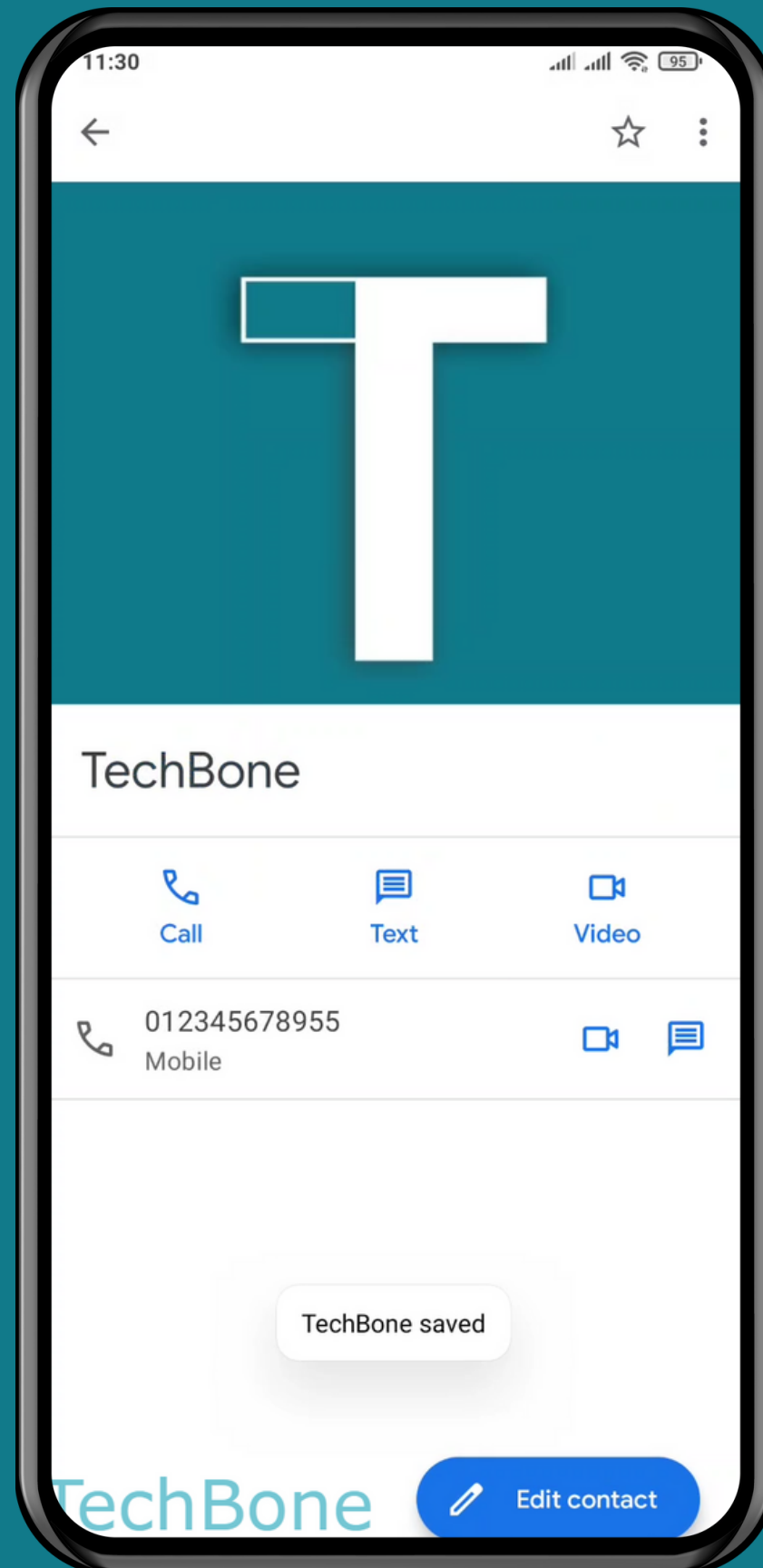


XIAOMI

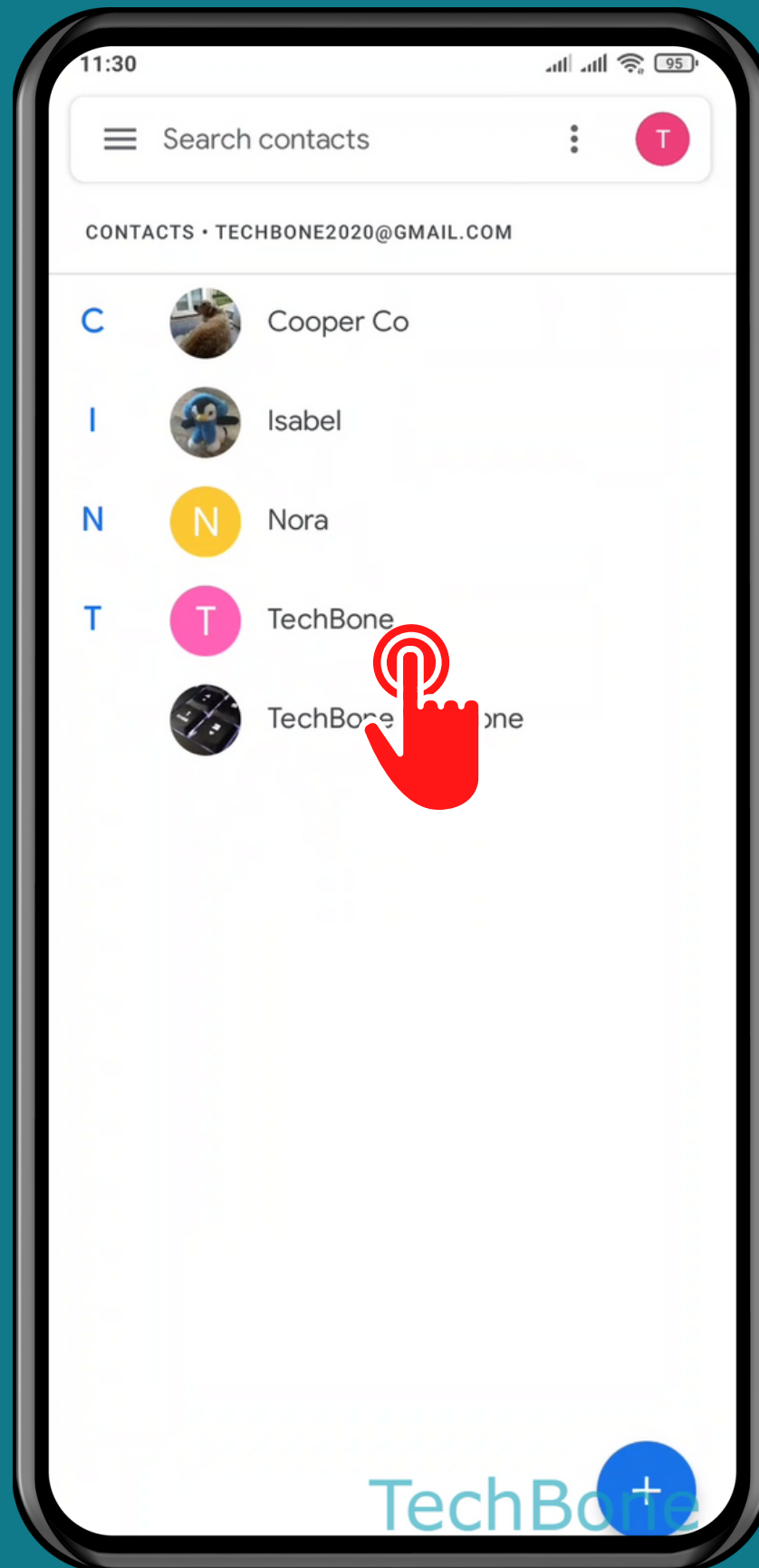
Contacts - Android 11 - MIUI 12

# HOW TO ASSIGN A PHOTO TO CONTACT

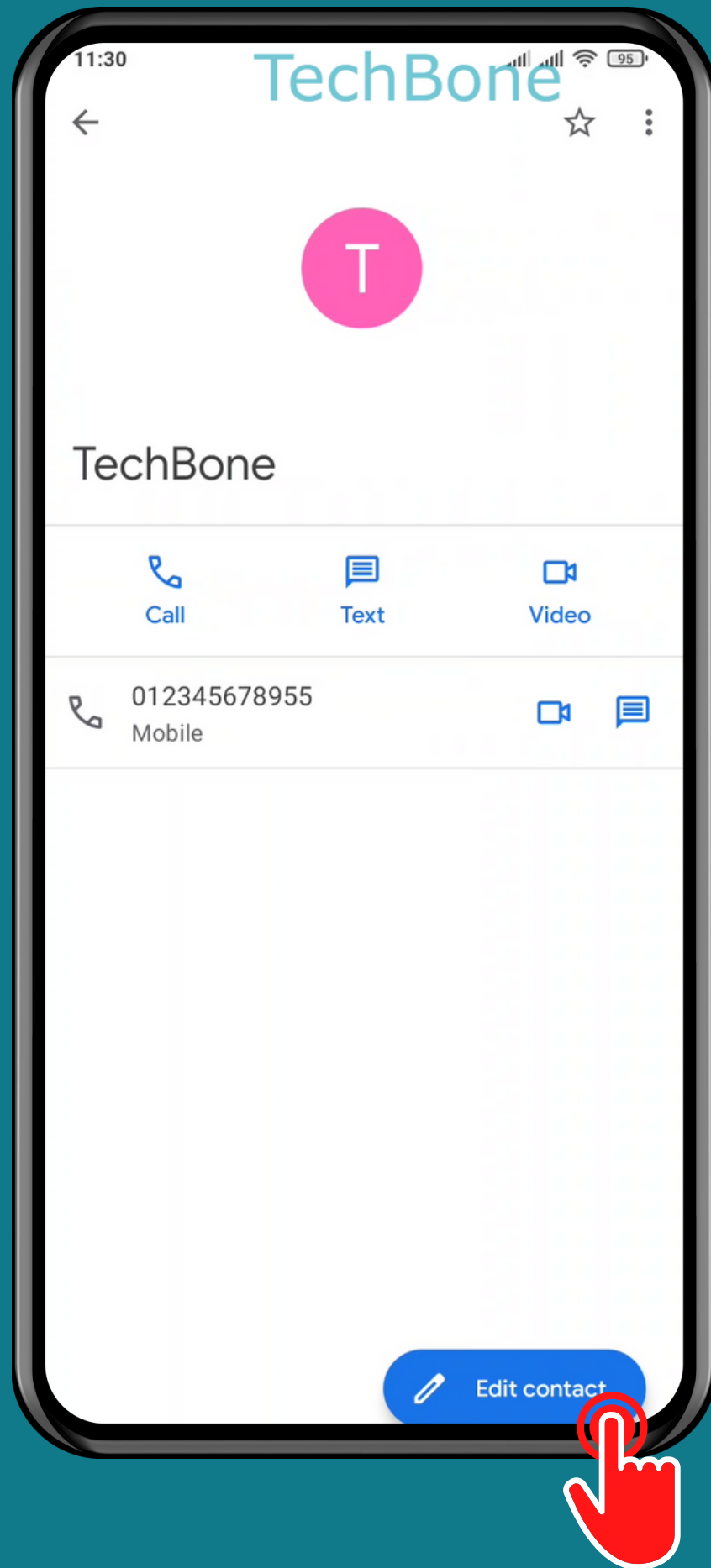




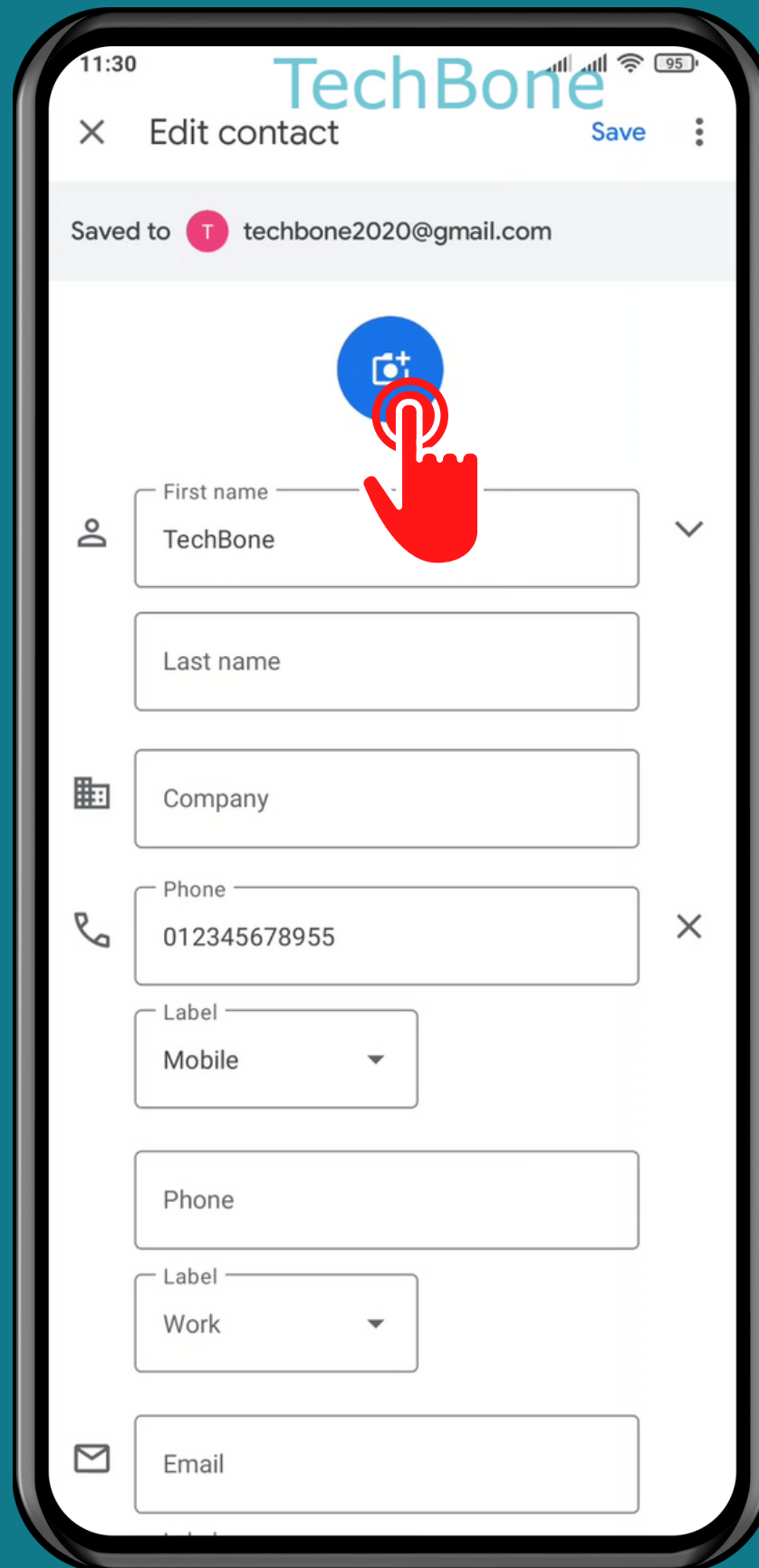
# Tap on Contacts



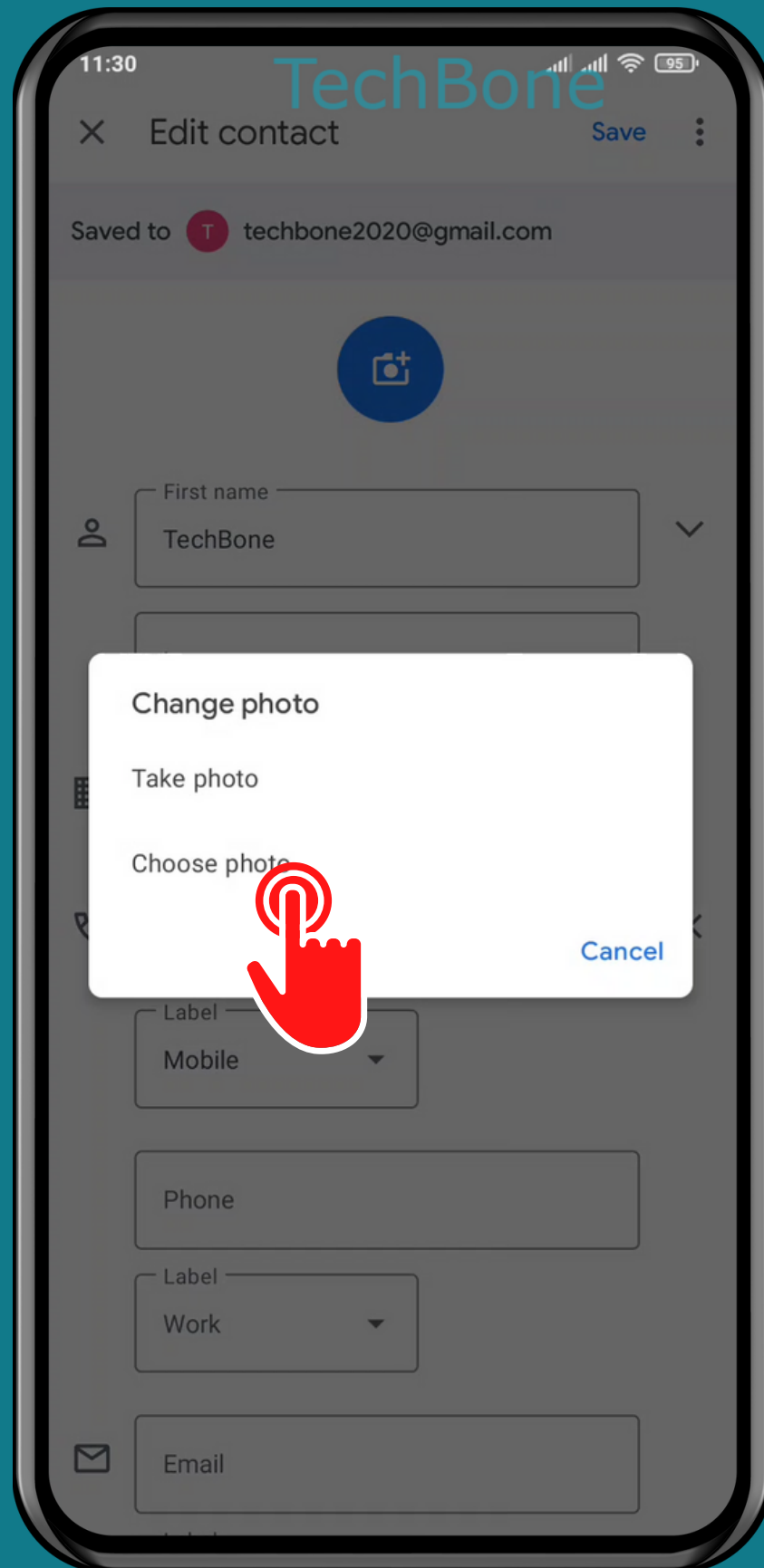
# Choose a Contact



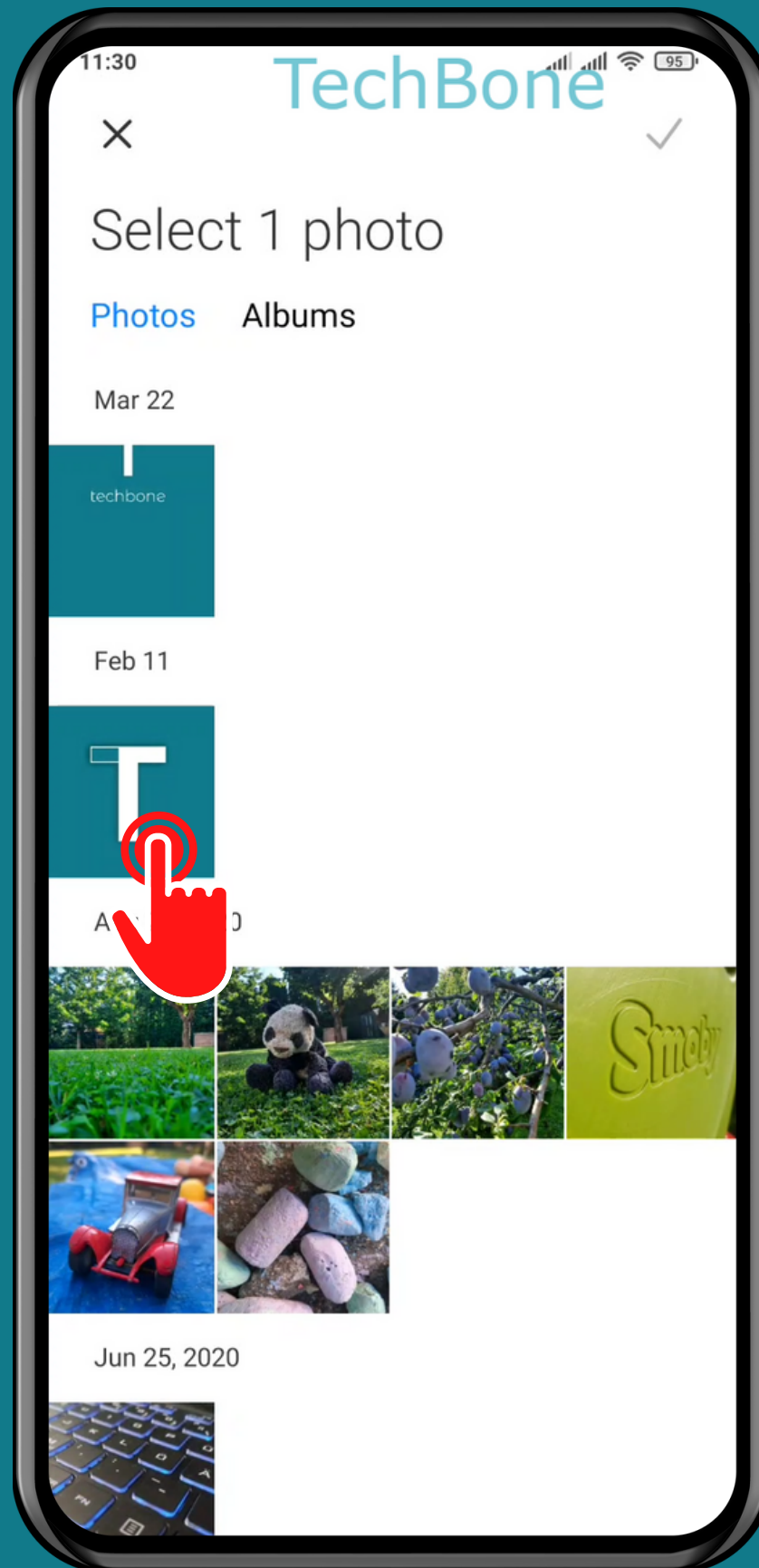
Tap on  
Edit contact



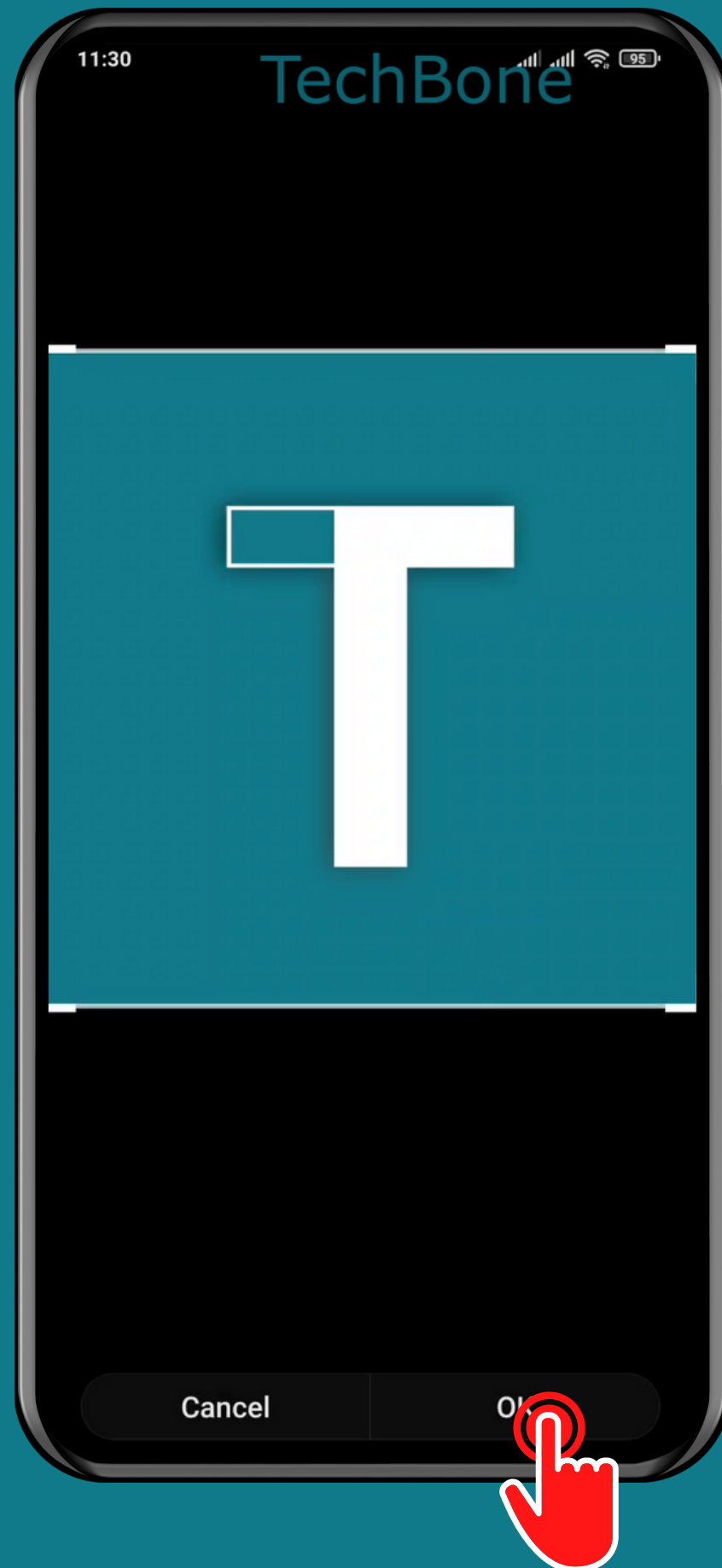
Tap on  
Add photo



Tap on  
Take photo or  
Choose photo

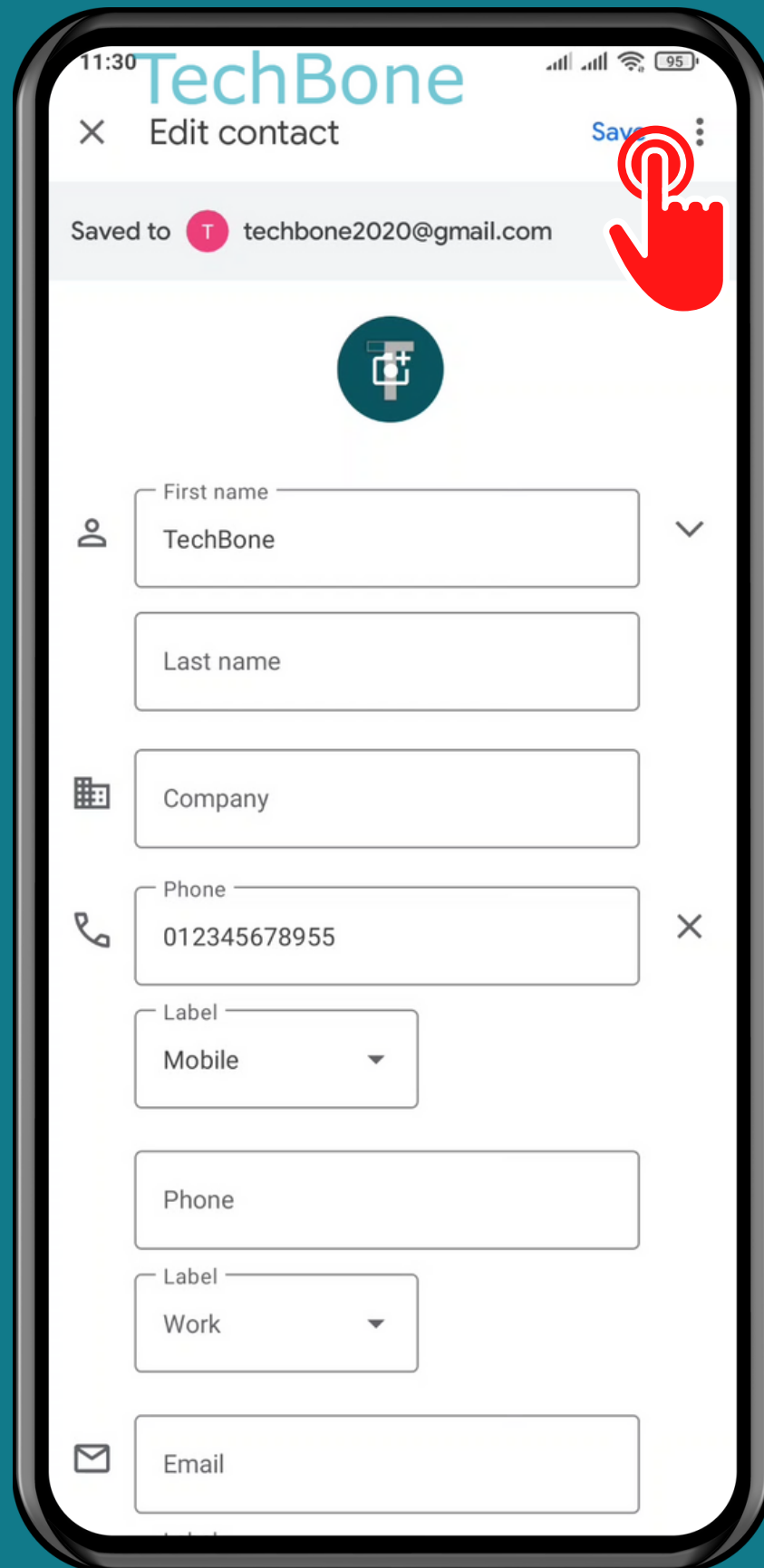


Select a  
Photo



Adjust the  
Photo and tap OK





Tap on  
Save

Done!