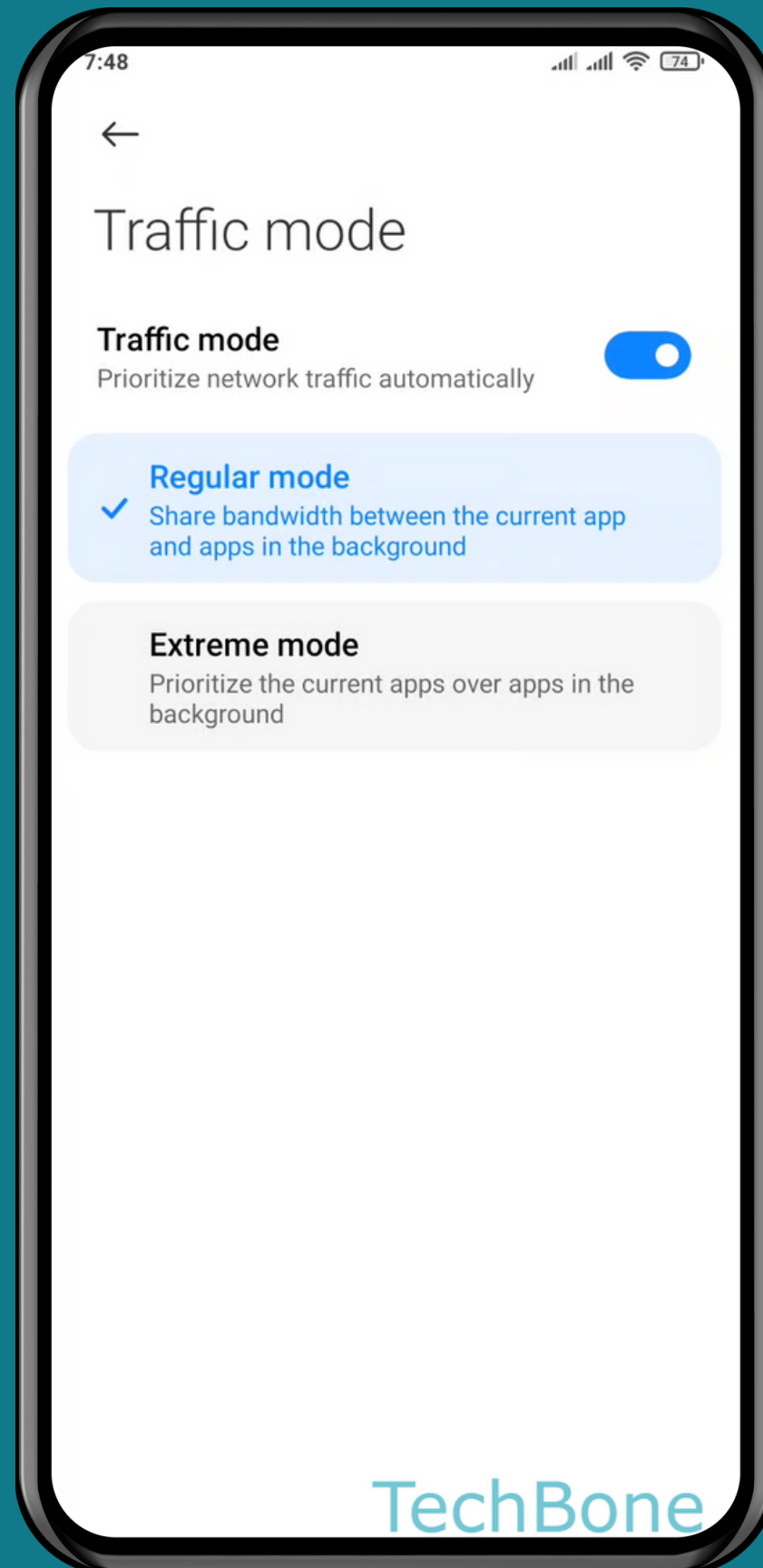


XIAOMI

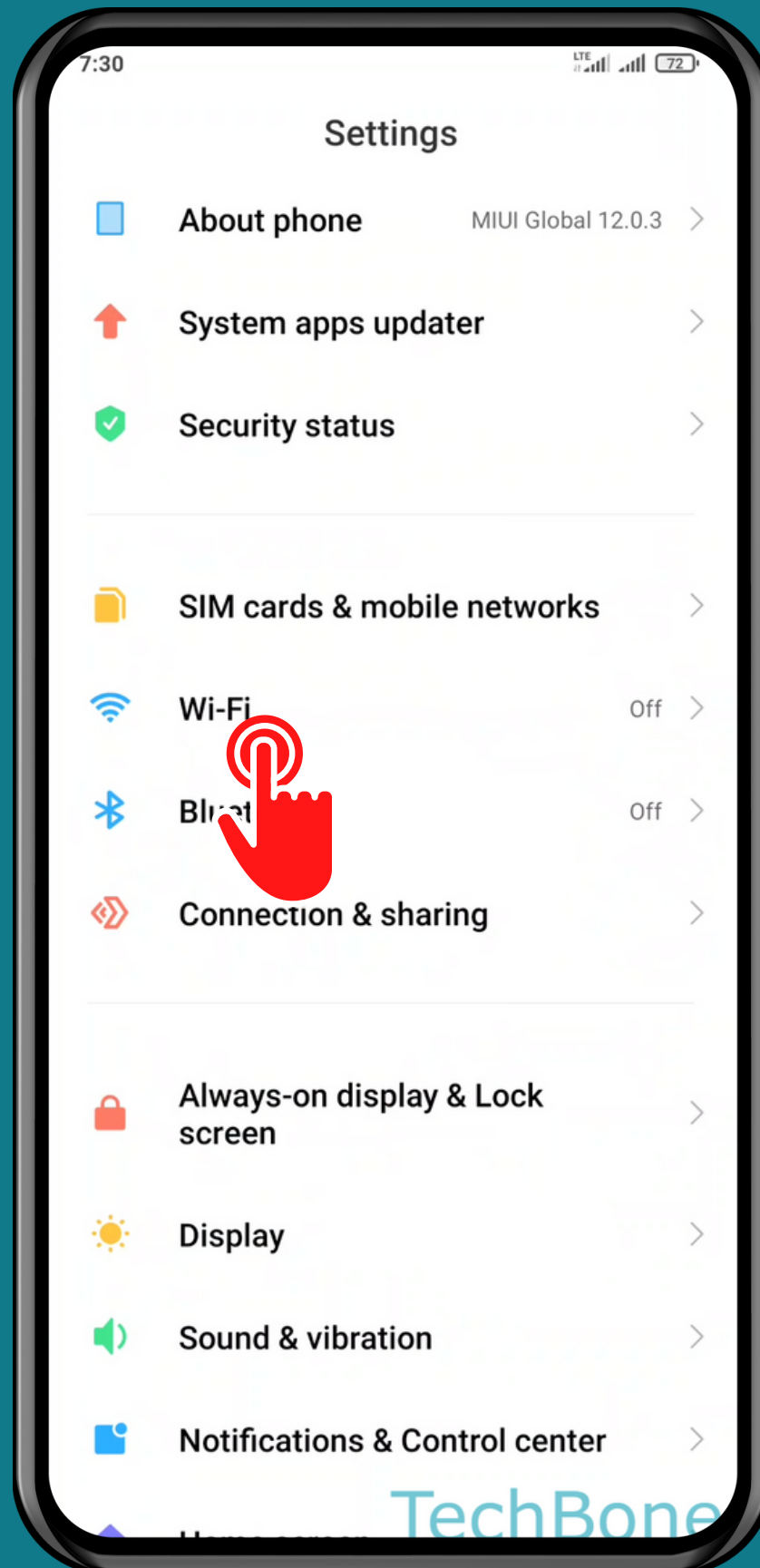
Android 11 - MIUI 12

HOW TO TURN ON/OFF TRAFFIC MODE

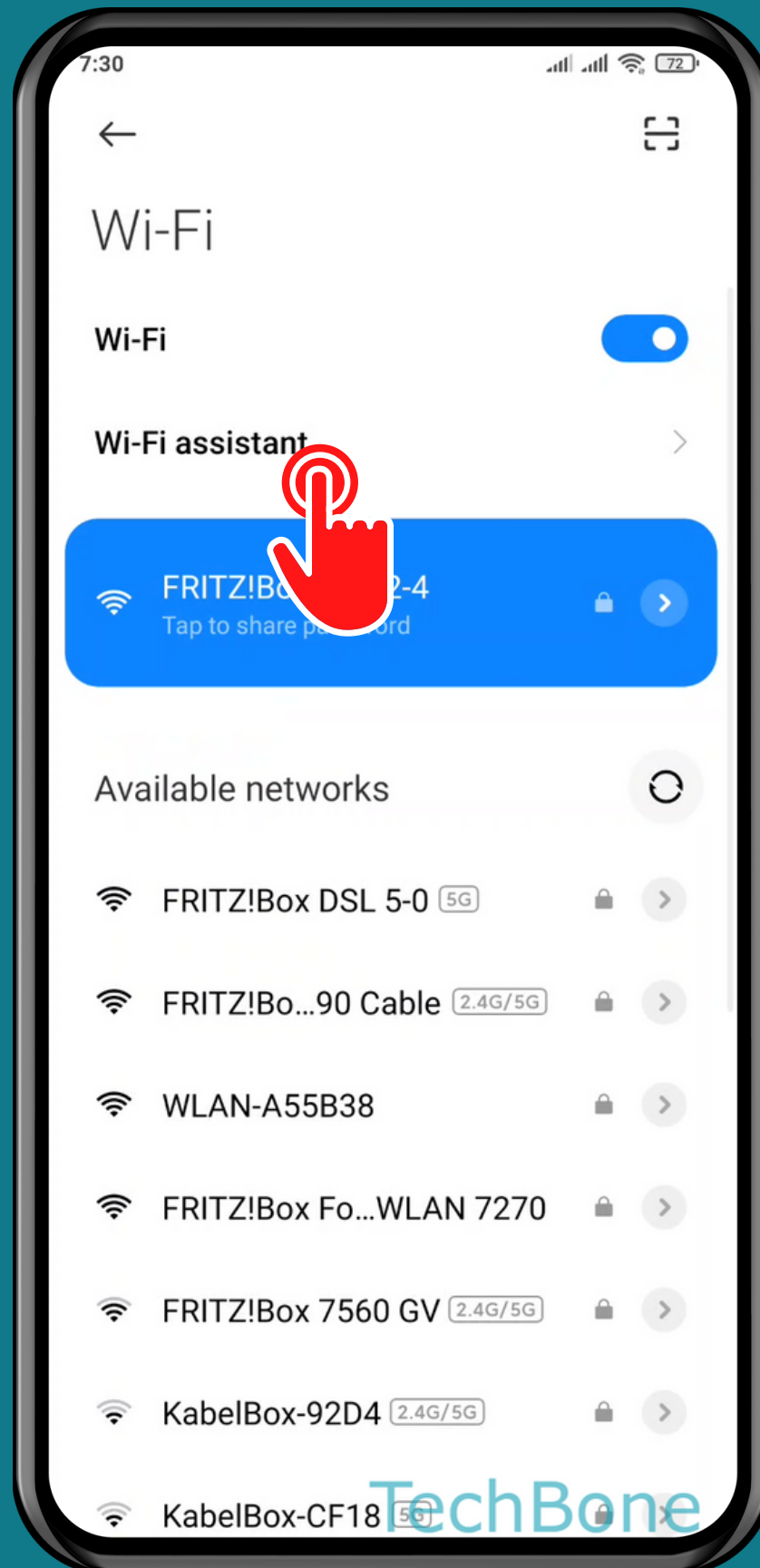




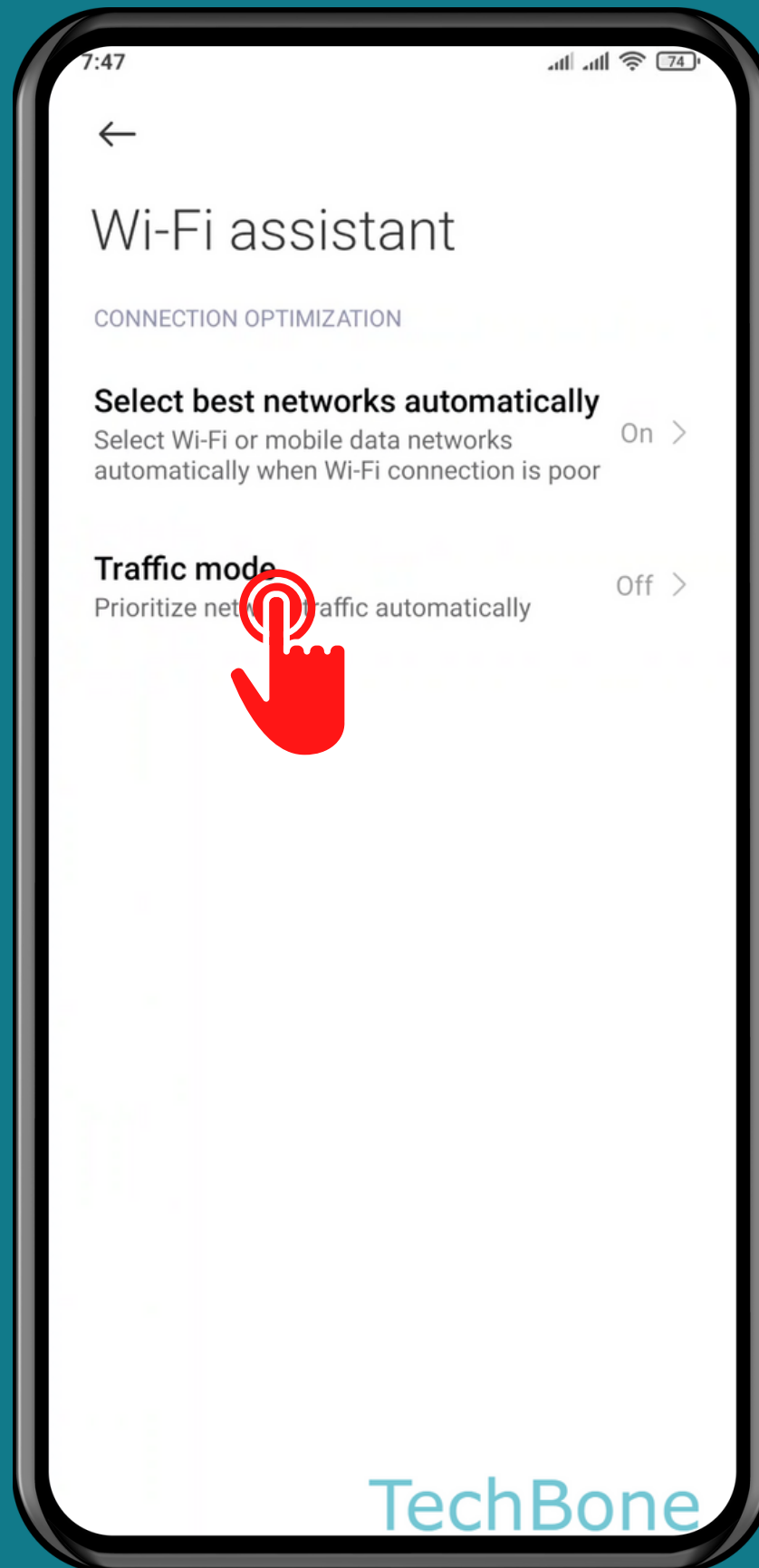
Tap on **Settings**



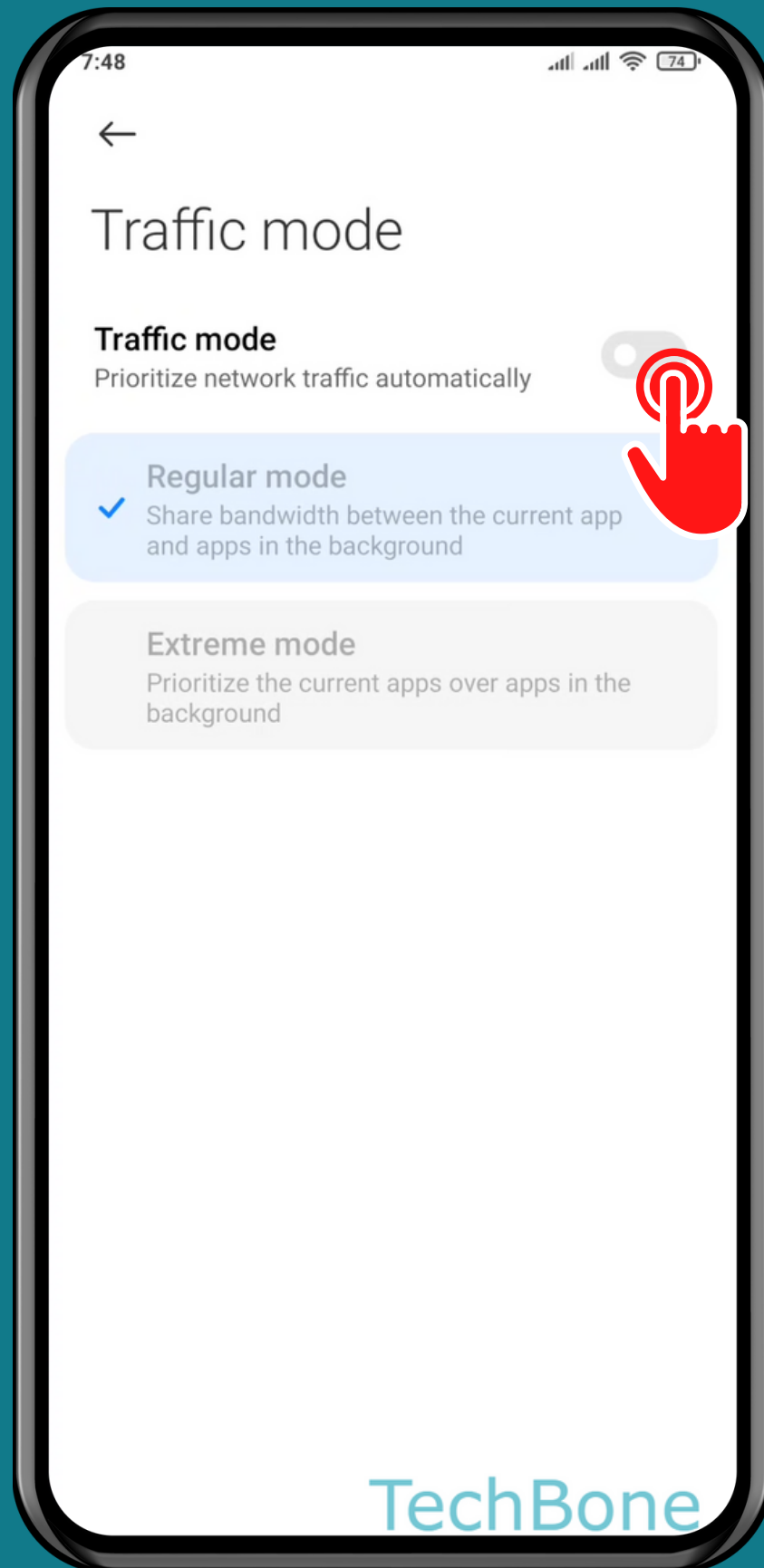
Tap on **Wi-Fi**



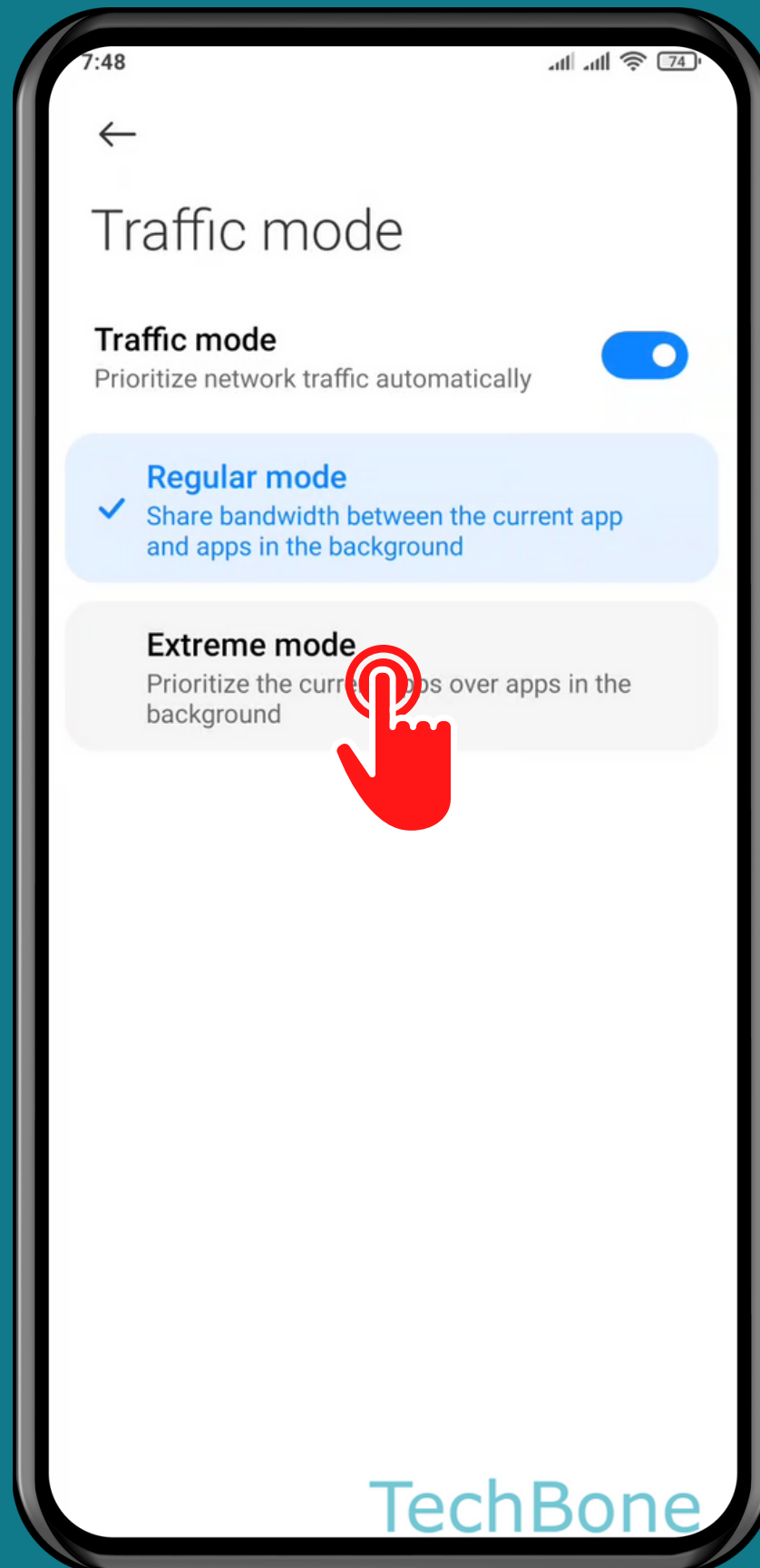
Tap on
Wi-Fi assistant



Tap on
Traffic mode



Turn On/Off Traffic mode



Choose
Regular mode or
Extreme mode

Done!